

# THE CAMPUS

Undergraduate Newspaper of the City College Since 1907

Vol. 112—No. 13

THURSDAY, MARCH 28, 1963

401

Supported by Student Fees

## Albany OK's Gov's Budget

The State legislature last night approved Governor Nelson Rockefeller's budget, including \$29.8 million for the City University. The vote for acceptance was 49-5 in the Senate, and 127-19 in the Assembly.

The \$2.8 million budget gives the City University a \$2.6 million increase in aid over the 1962-63 fiscal year. \$28.8 million is reserved for undergraduate programs, including funds for the total cost of teacher training programs, debt service, and one-third of the operating costs of the first two years of instruction other than teacher training.

The other \$1 million will be used for development of the City University's doctoral programs. Presently the CU maintains four PhD programs, and has plans to expand into five new areas. It had requested \$3.3 million to inaugurate the new programs, and continue the four existing ones.

Final word from the Board of Higher Education on the immediate (Continued on Page 2)

## Bust of Dante Recovered; Anonymous Phone Tip Ends 3-Month Search

An anonymous phone tip late Monday night led to the solution of the "Missing Dante Bust Mystery." A half-hour later the bust of Italian poet Dante Alighieri was found resting against a tree on the east side of Jasper Oval, near St. Nicholas Terrace.

### SC Forms Group To Fight Tuition

Student Council last night formed a permanent anti-tuition committee to continue the campaign to restore the mandate for free higher education. Martin Fogelson '63 was elected to head the committee.

He said that the committee plans "long range action on tuition, such as a referendum on the state ballot to restore the mandate for free tuition. We plan to make the drive as non-partisan as possible." He asked anyone interested in joining the committee to contact him in room 15' Finley.

Fogelson was also elected to fill the one remaining seat on the Executive Committee.

"The statue you are looking for is on the St. Nicholas Terrace," the tipster told Burns Guard James Risi, and hung up the phone. A police car with a floodlight was dispatched to the scene. Detective Charles Alfano of the 26th Precinct had been working on the case along with the College's Burns Guards.

The statue is now resting in Dean Peace's office waiting to be installed on its Downer Hall perch. Efforts to apprehend the thieves are still underway.

The statue, valued at \$3,000, was first reported missing four weeks ago. Members of the College's Italian club reported its disappearance from Downer Hall to Professor Gaston Gille (Chairman, Romance Languages).

## Day, Evening SG's Set Activities Talk

### ES President Asks 'Fair' Allocations

By Bob Weisberg

Plans are now being discussed for a joint Day-Evening Session committee for programming activities of both sessions.

Richard Kane '64, Student Activities Board Chairman, and Eunice Irizarry, Evening Session Student Government President, will meet next Monday to draw up the plans.

This action follows Miss Irizarry's charges that the SAB has shown bias against the Evening Session in the allocation of Finley Center rooms and the distribution of student fees. Appearing before the Center's Board of Advisors Monday evening, she requested that her session receive about 30% of the \$5,000 activities fund, since it pays 30% of the fees, and asked for restrictions on the Day Session's advance reservations of the Center's larger rooms, such as the Grand Ballroom and Aronow Auditorium.

The proposed committee would attempt to provide a "more equitable room and fee allocation." The evening session has received \$225 of the center's \$5000 program fund. Evening organizations have used the Center's rooms for 221 hours of the 1838 hours used by all groups so far this term.

Kane expressed sympathy with her on the matter. "They have a right to be mad," he said. "They seem to be getting the short end of it; it's the fault of the system."

He attributed the problem to the fact that "there hasn't been enough communication between the sessions." Such a joint committee, "outside the SAB," he said, would perhaps be a solution.



EUNICE IRIZARRY, Evening SG Pres. claimed bias against evening students by the SAB.

## Bloom Tosses Hat in SG Ring As Presidential Race Starts

By Ines Martins

The Student Government presidential race got off to an early start Tuesday when Ira Bloom '64 officially announced his candidacy.

Bloom said that Danny Katkin '64 will run for treasurer on his presently incomplete ticket. So far, no other students have announced their candidacy. However, observers feel that Samuel Eiferman '64, may be another possible presidential candidate.

According to SG President Alan Blume '64, the Independent Reform Party is expected to endorse Ira Bloom. The SG president is "personally" supporting Ira Bloom. However, while Blume declined to indicate his own election plans, he said he is "not through with Student Government."

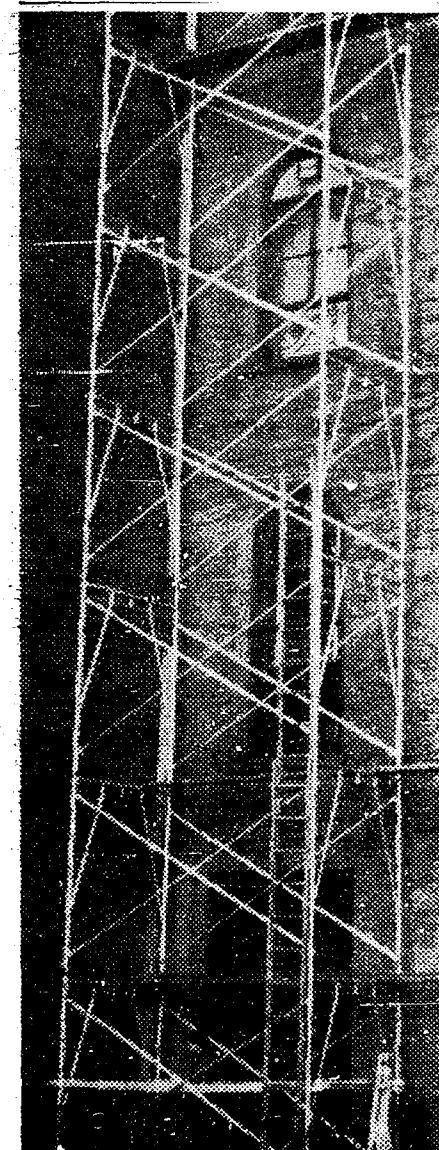
From rumors which have been making the rounds in Student government, it appears that Blume may fill the vacant vice-president slot on Ira Bloom's ticket. Bloom declined to comment on this possibility.

Wendy Cerwin '63, a former Constructive Action Party President, said a "gentleman's agreement" existed between Ira Bloom and Alan Blume whereby one would not run against the other. However, Bloom said that he would run regardless of the candidate opposing him.

Bloom was unable to make any comment on his chances in this term's race.



BUST of Dante Alighieri, stolen in December and recovered after a phone tip to Burns Guards.



Students who have been wondering who's been playing with an erector set on one of Finley's south walls, worry no longer. It is only scaffolding being put up to facilitate repairs on a leaky drain pipe.

### Seniors

Applications are now available in the Placement office, 425 Finley, for the April 23 Federal Service Entrance Exam for the Social Security Administration.

## Cafeteria Finance

This is the second in a series of articles on the College's cafeterias.

By Joe Berger and Steve Goldman  
The College's cafeteria costs \$400,000 a year to operate.

Over the last four years the cafeteria has been able to run at a net operating gain of about \$30,000. This profit represents a little over 1.5% of the operating costs, a percentage allowed the cafeteria as a non-profit enterprise.

Through these years the cafeteria has also incurred losses, yet overall increases were never needed. This situation may now change.

Two factors contribute to the present problem: the increasing cost of labor and the failure of sales volume to compensate for these increases. Food and maintenance costs, according to President Buell Gallagher, have re-

mained comparatively constant.

Labor costs rise every year. Over the last 5 years the annual increase has been 5 cents per hour per man. This year labor costs have risen again. The two-year contract signed in September 1962 between the Board of Higher Education and the Cafeteria Employees Union called for a 10 cents an hour increase.

In 1958-1959 salaries and wages represented 44.6% of total sales, in 1959-1960 45.9%. The new contract will raise this figure to 50.7% of sales.

This "labor squeeze" which the cafeteria is experiencing cannot continue indefinitely without the situation being remedied. As labor costs become a larger percentage of total sales, the amount allocated to the other items that constitute operating costs, mainly food preparation, will have to be decreased. Decreases here would,

of course, incite student complaint in an area where complaint has not been inhibited.

There could be no cuts in the number of workers employed. This of course would mean less service and possibly great inconvenience for the student.

The most likely action would hit the student directly where it hurts most — in the pocketbook through an increase in prices. This possibility is becoming closer to reality this year because the cafeteria is running the biggest deficit of the last five year period for which figures are available.

The loss for 3/4 of the year so far completed amounts to over \$5,000 and if projected to June, would total \$7,000. Though these sums only represent 1.8% of total sales, they are significant because at this time they could conceivably mean the cafeteria, unable to

(Continued on Page 3)

# THE CAMPUS

Published Semi-Weekly  
Undergraduate Newspaper  
Of The City College  
Since 1907

Vol. 112—No. 13 Supported by Student Fees

### The Managing Board:

**KEN KOPPEL '64**  
Editor-in-Chief

**VIC GROSSFELD '63**  
Associate Editor

**BOB ROSENBLATT '64**  
News Editor

**JEFF GREEN '65**  
Sports Editor

**HARVEY WANDLER '63.5**  
Managing Editor

**JANE BLECHNER '66**  
Business Manager

**INES MARTINS '64**  
Copy Editor

ASSOCIATE BOARD: Marion Budner '64, Nimrod Daley '64, Steve Goldman '65, Roberta Nusim '63.5.

CONTRIBUTING BOARD: Barbara Bromfield '63, Alma Kadragic '64, Roz Kobrin '63.5, Jerry Posman '63.

NEWS STAFF: Sam Bavli '66, Joe Berger '66, Shelley Bodaness '66, Jean Ende '66, Clyde Haberman '66, Eva Hellmann '66, Art Iger '66, Batyah Janowski '66, Martin Kauffman '65, Edward Kuntz '66, George Piperopoulos '64, Mike Sigal '66, Bob Weisberg '66, Brian Weiss '65, Judi Zaretsky '66.

SPORTS STAFF: Ray Corio '65, Bruce Freund '66, George Kaplan '66.

PHOTOGRAPHERS: William Frank '65, Joe Wilczek '65.

ART STAFF: Marguerite Mink '65.5.

CANDIDATES: Conn, Fabricant, Hessel, House, Huntley, Hyman, Kaminsky, Kogel, Lederman, Levy, Queller, Safir, Sckalor, Steinberg, Stilller, Suess, Traub, Winkler, Woodward.

Phone: FO 8-7426 FACULTY ADVISOR: Mr. Jerome Gold

Editorial Policy is Determined by a Majority Vote of the Managing Board

## Club Notes

All clubs meet today at 12:30 unless otherwise indicated.

### A.I. Ch. E.

Holds an orientation meeting for the Metropolitan Conference, in 103 Harris.

### A.I.A.A.

Sells tickets for its Easter vacation field trip in 108 Shepard. Presents the films "Dew Line Story" and "High-Temperature Materials" at 12:15 in 303 Cohen.

### Astronomical Society

Meets at 12:15 in 16 Shepard.

### Baskerville Chemical Society

Presents Dr. M. Weiner speaking on "The Structure of Organo-Lithium Compounds" in Doremus Lecture Hall, Baskerville.

### Biological Society

Presents Dr. Herbert Rosenkranz speaking on "Virus and Cancer" in 306 Shepard.

### Le Cercle Francais

Presents M. Desloover and Mlle. Friedman reading "Elle et Lui" and "Les Finances en Herbe" in 204 Downer.

### Chinese Students Association

Meets in 301 Harris at 12 to discuss the future of the club.

### Christian Association

Presents Mr. Stanley Feingold speaking on "Relation of Religion to Politics" at 12:15 in 424 Finley.

### Class of '63

Meets in 121 Finley.

### Club Iberoamericano

Presents a music session with records of the Renaissance period in 302 Downer.

### Drama Players

Presents a dance on Friday, April 26 at 8:30 in the Grand Ballroom Finley. Admission is free.

### Dramsoc

Holds an organizational meeting at 12:15 in 428 Finley. All members must attend.

### Economics Society

Presents Mr. Christopher of the Federal Reserve Bank speaking on "The United States Balance of Payments Problem" in 107 Wagner.

### English Society

Presents Prof. M. N. Cohen speaking on "Baudelaire, the Discoverer" in 105 Mott.

### Geographical Society

Meets at 12:14 in 016 Harris.

### German Club

Holds final casting for an all-German language production in 311 Mott. Everyone is welcome to try out.

### Government and Law Society

Presents Consul Pablo R. Sutez, Jr. from the Philippine Consulate speaking on "Recent Political Developments in Southeast Asia" in 212 Wagner.

### History Society

Presents Mr. Muhammad Lugman, Charge d'Affaires of the Mauritanian delegation to the U.N., speaking on "Mauritania: A New Nation Looks Back on Colonization" in 105 Wagner.

### Inter-Varsity Christian Fellowship

Holds nominations for officers in 104 Wagner.

### Marxist Discussion Club

Presents a hootenay and folk music educational on Woody Guthrie in 217 Finley at 12:15. The New World Singers will perform and Joshua Dunsen of Mainstream will speak.

### Mercury

Meets in 331 Finley.

### Musical Comedy Society

Meets at 12:15 in 350 Finley.

### N.A.A.C.P.

Presents a Student-Faculty Tea in 438 Finley at 12.

### Newman Club

Sponsors lecture by Prof. Duchacek at the Political Science Catholic Center, 469 W. 112 St.

Holds an April Fools Dance on Saturday, March 30 at St. Paul's Auditorium on Columbus Ave. between 59 and 60 St.

### Outdoor Club

Meets in 214 Shepard.

### Photography Club

Meets in 308 Harris.

### Promethean

Holds Workshop on Friday, March 29 from 3 - 6 in 428 Finley.

### Psychology Society

Presents Dr. Staal speaking on "Freudian Psychology" in 210 Harris.

### Railroad Club

Shows two films in 301 Cohen.

### S.A.B.

Sponsors a dance with the Drama Players on Friday, April 29 at 8:30 in the Grand Ballroom of Finley.

### Sholem Aleichem Yiddish Club

Meets in 111 Mott to coordinate April program and speakers. All members must attend.

### Society for Criticism and Discussion

Presents Mr. Benjamin Kaufman discussing "The Religious Interpretation of History" in 305 Finley.

### Student Peace Union

Holds an organizational meeting in 105 Mott.

### WBAI Club

Presents Paul Krassner speaking on "Satire and Social Concern" in 101 Finley.

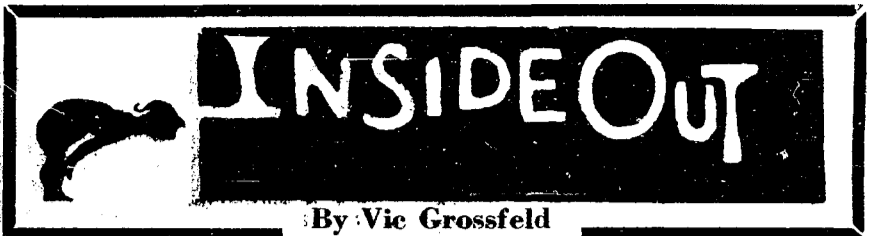
### Young Republican Club

Holds a membership meeting at 12:15 in 04 Wagner.

## Budget

(Continued from Page 1)

future of the five new doctorate programs will be forthcoming when the Mayor presents his executive budget next month. Last year the city gave \$500,000 in aid, although \$1 million was requested. With an expected deficit in the budget of \$200 million, observers have indicated doubt for any increase in aid for PhD studies.



By Vic Grossfeld

This time Nat Gant looked like a turtle. He had retracted his head between his shoulder blades and with his coat collar up only his eyes could be seen. They loomed enormous through fishbowl lenses. His body was oozing from shadow to shadow in the alley behind the bookstore. Needless to say, I sneaked up behind him.

"Hiya Nat," I said.

He stopped. His head began to disappear entirely. Nat Gant, was trying to become a chameleon. After a minute or so he slowly turned to face the Unknown. His shoulders promptly dropped and his head came out. He was, of course, Relieved. I started to say something, but he silenced me with a glittering eye. Then his gaze darted from point to point.

"Are we alone," he whispered. "The walls have ears," I whispered back.

"I think I can trust you," he said. "You can be of Use. Meet me on the grass in front of the Cohen Library at 11:30 tonight."

With this he disappeared.

I wore my sneakers. At 11:45 I arrived at the library to find Nat Gant pawing the grass and replacing imaginary divots. I approached. "I've done it," he said.

"You have?" I said.

"Indubitably," he explained.

He seemed to have finished his Testing and walked quietly around to the back of the Library.

"The ladder will hold," he muttered to himself and then to me and pointed to a canvas tarpaulin covering some Stuff.

"This is my Paraphernalia," he said.

"Oh," I said.

"I've done it. He would be proud of me," he said.

"Who?" I said.

"Kajetan von Schlaggenberg. You do, of course, remember Kajetan von Schlaggenberg?"

"I have heard of him," I said, "though he was before my time."

"Terribly Unfortunate. A Grave Error on your part."

He hopped about the tarpaulin peering under it here and there by the light of a full moon. Satisfied, he approached me once more.

"I have carried on His work faithfully," Nat Gant said with reverence. "Kajetan von Schlaggenberg came in a time when things were Quite Dull. The first time he came into the office he announced himself. 'I am Kajetan von Schlaggenberg with a small Vee!' and then proceeded to recite the names of 333 old ballplayers. His acceptance, needless to say, was Immediate. Then he invented 'Cat' (with which you are no doubt familiar)."

"The first Cat thing he did is, by now, Legendary. On the night of March 31, just one hour before midnight, he crept behind the South Campus gatehouse, where President Gallagher lives, and calmly let the air out of all four tires on the President's four-door Plymouth sedan. He then opened the trunk and De-aired the Spare.

"So it has been written," I commented.

"Divinely Inspired," Nat Gant said. "The man was a Genius. Perhaps his greatest Work, however, was performed in this very building in whose aura we stand. He had planned it for months. Singlehandedly! I once asked him what inspired him. 'It just Came To Me,' he said. On the day of the Happening he Requisitioned us at our houses. We came without knowing why. He just told us to come and we came. We had Faith in Kajetan von Schlaggenberg.

"It was near midnight. He marched us up to the third floor of the library and deposited us. 'Wait here,' he said. He came up several minutes later with a duffle bag filled with Paraphernalia. (I later learned that he had spent months making intricate observations and calculations). As he was about to give us our instructions he spied an Unforeseen Contingency. He took nine of us down with him and had us drive our three automobiles through the 135 St. gate and up the steps of the library. We obeyed him Without Question.

"We drove them into the library (the entrances were wider, and the cars were Volkswagens, in the old days) and up the ramps. One car was left on each landing. We then regrouped on the third floor landing. Kajetan von Schlaggenberg opened the duffle bag without a word and took out fifteen pairs of roller skates. The rest, of course, is Patently Clear.

"I later asked him why he brought the automobiles into the library. 'When one roller skates down a library ramp, or any hill for that matter, one has need of an automobile, now and then, against which one can stop oneself,' he said.

When Nat Gant had finished I stood before him awed speechless. After a silent few minutes he began again.

"And now I am humbly carrying on The Master's Work. You are no doubt familiar with the two Monstrosities on North Campus — the Administration Building and The Tech Building, I have been to work on them this very night. Modern Architecture. Pfui! I have renamed them appropriately! The unornamented glassy exteriors stirred my subconscious. Visions of Cold Gleaning Porcelain and Suchlike.

Nat Gant now lifted the tarpaulin exposing two ladders, an elaborate scaffold and many cans of paint. It hit me suddenly.

"You didn't!" I exclaimed.

"Yes, I did," he said with a wicked grin. "In thirty-foot-high block letters. The Tech building shall hereafter be known as 'MEN' and the Administration Building 'WOMEN'."

When I had sufficiently recovered I asked him what he had planned for the library.

Picking up a can of paint and walking around to the front he said, "The library is obviously the place for the esoteric. Which do you prefer? HERMAPHRODITES or ANDROGYNES?"

"Unquestionably HERMAPHRODITES," I said.

"Capital!" he said.

## Night and Day

The forthcoming meeting of the Evening Session Student Government President and the chairman of the Student Activities Board is a most welcome development.

Past co-ordination of Day and Evening Session Activities has been unsatisfactory, if not non-existent. There is no existing machinery for resolving day-evening session conflicts in the areas of fee and room allocations. Each session's student government has previously functioned in blissful ignorance of the other's plans and needs.

It was with these acts in mind that the evening SG president appeared before the Board of Advisors asking that her session receive one-third of the center activities fund, the same percentage of total center fees that evening students pay. Presently, the evening session receives only a small fraction of the activities allocations. A more equitable allocation of fees is definitely in order.

The second evening grievance concerns day session monopoly of advance reservations for the Grand Ballroom and the Aronow Auditorium. Day session organizations have booked the Ballroom, Auditorium, and the two lounges far into the term, making it extremely difficult for any evening groups to hold activities there. A more fair system of room reservations is also desirable.

The proposed day-evening committee has a considerable amount of work cut out for it. The participants should receive all possible encouragement from their respective constituent students. The outcome of the forthcoming meeting, and the formation of the joint committee, may herald a long-overdue improvement in relations between the two student governments.

## Lost and Found

After a three month-long search, the College's bust of Dante Alighieri, an Italian poet, was found Monday night. But it was only discovered by a joint Burns Guard-New York City Police Department search party after an anonymous phone call in the middle of the night tipped them off that the \$3000 statue was on the east side of Jasper Oval.

Thus with the resettlement of the eighty pound bust on its pedestal on the east wall of Downer Hall, in a few days, the latest cloak and dagger chapter of the College's "missing bust mystery" will draw to a successful conclusion. We are especially pleased the statue was found because we didn't want a repetition of last Spring's "missing bust mystery" when the bust of John H. Finley was repeatedly spirited away from its niche in the Student Center. At that time, we were prompted to offer a substantial reward to anyone giving information leading to the arrest and conviction of the guilty. We didn't want to do that again.

## And They're Off

Spring is here and with it the scent of Student Government elections is in the air. Parties and politicians are girding their loins for the annual appeal to the voters.

One candidate has already tossed his hat into the presidential ring, and seems to have gathered a strong slate of running mates. Rival aspirants for the position of SG chief executive are expected to make their declarations soon. Nominating petitions will begin circulating next Wednesday, and the campaign will get underway officially.

Those students who fear the building of a dynasty of the B's in student government should not complain later that they were not forewarned. The political gauntlet has been thrown down in earnest. The time for all good students to come to the aid of their party and-or candidate is Now.

## Co

(Cont... cope wi... costs. wi... An inc... come th... lagher o... the cafe... last fou... make up... to offset... how muc... has not... cause sor... has been... cafeteria... The fa... increase... years is... lying th... problems... If the... increased... sate for... deficits v... cording t... enough... could co... decrease.

Why is... enough?... this on s... in the ca... eat."... He exp... fill space... the sales... becomes... during th... 2:30. Th... Gallagher... who want... seats.

The Pr... students... those hou... activities... would in...

Female gr... Miami, sf... We're just w... (Os

HARD... AT TO... FRI. E... APRIL... TIX: \$4, 3... 2.50... RCA VICTOR



Partial text from the right edge of the page, mostly cut off.



### Cafeterias

(Continued from Page 1)  
cope with its increasing labor costs, will increase prices.

An increase will not, however, come this year, President Gallagher claims. The \$30,000 that the cafeteria has made over the last four years is intended to make up deficits, and will be used to offset the present one. Exactly how much remains of this amount has not yet been determined because some of this reserve money has been used for the expansion of cafeteria facilities.

The failure of sales volume to increase significantly in recent years is the second factor underlying the cafeteria's financial problems.

If the amount of sales could be increased sufficiently to compensate for increased labor costs, deficits would be non-existent, according to Dr. Gallagher. A large enough sales volume increase could conceivably mean a price decrease.

Why is sales volume not large enough? Dr. Gallagher blames this on students who sit around in the cafeteria "and lounge, not eat."

He explains that these students fill space without contributing to the sales of the cafeteria. This becomes especially significant during the hours from 11:30 until 2:30. Sales slack off, says Dr. Gallagher, because many students who want to eat there cannot find seats.

The President estimates that if students in the cafeteria during those hours would restrict their activities to eating sales volume would increase 50 per cent.


### Classified

Female graduate student wants ride. Miami. share expenses. TR 3-6742  
We're just wild about Wilde (Oscar Wilde, that is) The Drama Players

HAROLD LEVENTHAL PRESENTS

# ODETTA

AT TOWN HALL  
FRI. EVE.  
APRIL 5th  
TIX: \$4, 3.75, 3.50, 2.50, 2.




RCA VICTOR RECORDS

HAROLD LEVENTHAL presents

# BOB DYLAN

at Town Hall  
Fri. Eve. April 12  
at 8:30 P.M.  
\$3, \$2.75, \$1.75  
ON SALE AT BOX OFFICE



EXCL. COLUMBIA RECORDS

### Prof. Gertrude Schmeidler, Psychology Dept.

Will speak on the topic of EXTRA SENSORY PERCEPTION at the second HPA "Chat" of the year

— ALL INVITED —

WHEN: March 28 — Thursday  
TIME: Anytime between 3 - 5 P.M.  
WHERE: F 327  
Coffee and Cake will be served

## BROOKLYN LAW SCHOOL

Non-Profit Educational Institution ★ Approved by American Bar Association

DAY AND EVENING Undergraduate Classes Leading to LL.B. Degree  
GRADUATE COURSES Leading to Degree of LL.M.

New Term Commences September 16, 1963

Further information may be obtained from the Office of the Director of Admissions,

375 PEARL ST., BROOKLYN 1, N. Y. Near Borough Hall  
Telephone: MA 5-2200

for college undergraduates  
**OUR "346" DEPARTMENT AND OUR UNIVERSITY SHOP**

These two fine departments offer a wide choice of practical, good-looking clothing and furnishings, reflecting our taste, exclusive styling and unmatched experience in outfitting undergraduates. We invite you to visit our stores during Spring vacation, and make your selections.

OUR "346" DEPARTMENT (sizes 36 to 46)  
Our Tropical Suits, \$80 and \$95\*  
Lightweight Sport Jackets, from \$60  
Tropical Odd Trousers, \$25

OUR UNIVERSITY SHOP (sizes 35 to 42)  
Dacron® and Worsted Tropical Suits, \$65\*  
Washable Suits, from \$40  
Odd Jackets, from \$25 • Blazers, \$45  
Khaki Chino Odd Trousers, \$10

\*Prices slightly higher west of the Rockies.

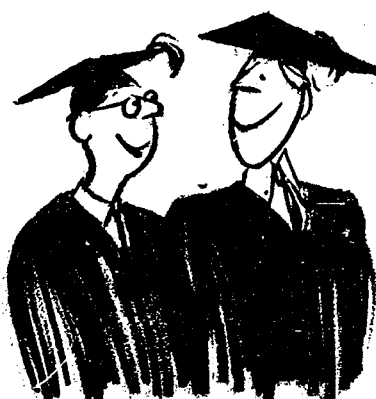
ESTABLISHED 1818

# Brooks Brothers

## CLOTHING

Mens Furnishings, Hats & Shoes

346 MADISON AVE., COR. 44TH ST., NEW YORK 17  
46 NEWBURY, COR. BERKELEY ST., BOSTON 16, MASS.  
PITTSBURGH • CHICAGO • SAN FRANCISCO • LOS ANGELES



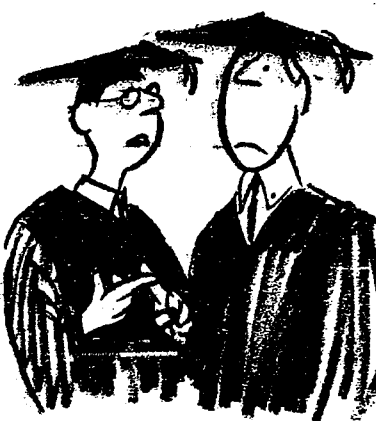
1. According to the Department of Labor, you're worth over \$350,000 as soon as you get your sheepskin. That's theoretical, of course.

I didn't even know the Department was thinking about me.



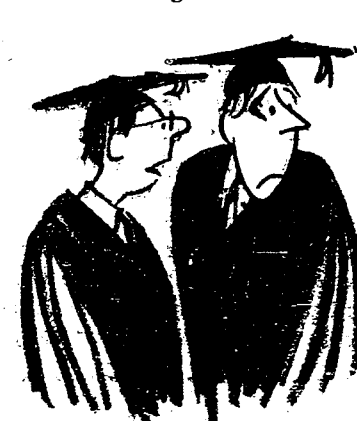
2. The way they figure it, that \$350,000 is how much the average college graduate will earn by the time he retires.

I'll take it right now in a lump sum. Would I live! Penthouse. Yacht. Hamburg. The works.



3. As an Eco major, I feel obliged to tell you what would happen to that bundle. First, Uncle Sam would help himself to about 290 Cs. With the going rate for penthouses, your life's earnings would disappear in one year.

You've ruined my day.



4. Since you'd be only 22, you couldn't qualify for Social Security. You'd have to go back to your dad for an allowance.

I never could handle money.



5. Fortunately, there's a way out for you.

Tell me—tell me.

Well, you won't be getting all that money in one year. You'll be getting some of it each year, at a much lower tax rate. What you should do is put aside a certain amount of it.



6. Put some money into cash-value insurance, the kind they call Living Insurance at Equitable. It gives your wife and kids solid protection and it saves for you automatically—builds a cash fund you can use for retirement or any other purpose.

You Eco guys have all the answers.

The Equitable Life Assurance Society of the United States ©1963  
Home Office: 1285 Avenue of the Americas, New York 19, New York  
For information about Living Insurance, see The Man from Equitable in your community. For information about career opportunities at Equitable, see your Placement Officer, or write William E. Blevins, Employment Manager.



## TAU EPSILON PHI FRATERNITY

presents

# THE WEAVERS

Saturday Evening - 8:30 P.M.

March 30, 1963

HUNTER AUDITORIUM

\$2.75, \$2.50, \$2.25, \$1.75

Organizational discounts

TICKETS ON SALE:

- THURSDAY and FRIDAY MARCH 28 and 29 (Opposite Knittle Lounge and Finley 152)
- CCNY Bookstore
- Finley 229 — sold by Gamma Sigma Sigma
- Tickets Available at Perf.

# Beavers Embark for Nationals As Mannino Seeks All-America

At 7:30 this morning a United Air Lines Astrojet left Idlewild Airport for Denver—altitude 6,000 feet. Aboard were four representatives of the College—foilsman Vito Mannino, epeeist Stan Lefkowitz, sabreman Bob Kao, and their coach, Edward Lucia. They were heading for fencing's National Championships at the Air Force Academy.

Although Denver's altitude is 6,000 feet, Lucia is not worried about the problem of acclimation. "The effect of the flight will depend on the weather," he said. "It should take us about 24 hours to become acclimated to the altitude, and we will have enough time. Besides, any normal person [non-athlete] can acclimate himself in that time period."

Captain and defending all-American Vito Mannino will spearhead the Beaver drive to better last year's seventh place finish. "This is my last collegiate competition, and I want to do well," he said.

Mannino will be seeking to repeat last year's performance, in which he gained all-America rating. The only other returnee from last year's top men is Phil Otto of Yale who finished immediately above Mannino in the competition. Ironically,

Mannino downed the sturdy son of Eli every time the two met last year, while Otto has yet to lose to Mannino this season.

Lucia is apparently convinced that Mannino has an excellent chance of repeating, but that the



VITO MANNINO

sudden withdrawal of Leon Agaronian from the Nationals will hurt the team's overall chances. However, he feels that Kao, Agaronian's replacement, will be able to pick up most of the slack.

"If Leon had gone he could have been a gold medalist," Lucia said. "He had all the potential." Agaronian's fear of flying had forced Lucia into substituting the spirited Kao last Wednesday.

Kao was optimistic about the upcoming meet. "I can do things now with the sabre that I couldn't do before," he said. "I can make cuts and parries that I'd never even tried before. All I used to be able to do was attack."

Lefkowitz is also a replacement. Originally, Marshall Pastorino, a senior, was expected to represent the epeeists on the three man team. But, according to Lucia, "Lefkowitz is an unknown quantity; Pastorino is a known quantity. That's why he [Pastorino] is not on the team."

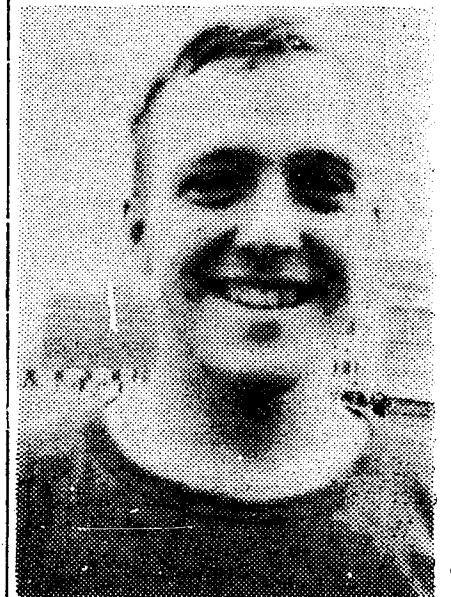
# 'New Look' Lacrossemen Exhibition Against MIT

By Bruce Freund

Fresh from an upset victory over the New York Lacrosse Club, and featuring a new offensive look, the College's lacrosse team takes the field against MIT tomorrow in its final pre-season tune-up. The season "unofficially" officially opens Saturday when the stickmen oppose the alumni in Lewisohn Stadium.

The Beavers, victorious last week, are not content to rest on their tails. "We instituted all new plays after the Hofstra game [won by the Dutchmen, 6-5] and we need work to iron them out," Coach George Baron said. "We have to take account of the men we lost." Chief among these casualties is of course graduated all-America attackman Johnny Orlando.

Strangely enough, though, Orlando's absence may not prove too costly. Baron is impressed by the work of his replacement, diminutive junior Johnny Oestreicher. "He's only 5-5 but [last Saturday] he was the best man on the team." In addition to Oestreicher, the Beavers are relying on attack captain Andy Mueller.



JOHNNY OESTREICHER

# Get Lucky Play "Crazy Questions"

(Based on the hilarious book "The Question Man.")

50 CASH AWARDS A MONTH. ENTER NOW. HERE'S HOW:

First, think of an answer. Any answer. Then come up with a nutty, surprising question for it, and you've done a "Crazy Question." It's the easy new way for students to make loot. Study the examples below; then do your own. Send them, with your name, address, college and class, to GET LUCKY, Box 64F, Mt. Vernon 10, N. Y. Winning entries will be awarded \$25.00. Winning entries submitted on the inside of a Lucky Strike wrapper will get a \$25.00 bonus. Enter as often as you like. Start right now!

**RULES:** The Reuben H. Donnelley Corp. will judge entries on the basis of humor (up to 1/3), clarity and freshness (up to 1/3), and appropriateness (up to 1/3), and their decisions will be final. Duplicate prizes will be awarded in the event of ties. Entries must be the original works of the entrants and must be submitted in the entrant's own name. There will be 50 awards every month, October through April. Entries received during each month will be considered for that month's awards. Any entry received after April 30, 1963, will not be eligible, and all become the property of The American Tobacco Company. Any college student may enter the contest, except employees of The American Tobacco Company, its advertising agencies and Reuben H. Donnelley, and relatives of the said employees. Winners will be notified by mail. Contest subject to all federal, state, and local regulations.

Sis Remsen '66  
accepts the  
challenge of  
Sis Wittes '66  
to play volleyball

**"GIGI"**  
comes to CITY  
209 Steiglitz  
(Film Institute)  
12:00  
Thursday, March 28

Who?  
**Toyo Kikuchi!**  
for  
**Carnival Queen**  
by  
**Sis Tremaine '66**

**JOBS IN EUROPE**  
Grand Duchy of Luxembourg  
March 29, 1963 - Would you like to work at a Swiss resort, a Norwegian farm, a German factory, a construction site in Spain, or a summer camp in France? Thousands of paying summer jobs (some offering \$190 monthly) are available in Europe to U.S. students.

The American Student Information Service, celebrating its 6th Anniversary, will award TRAVEL GRANTS to first 1500 applicants.

For 20-page Prospectus, complete selection of European jobs and Job Application (enclose \$1 for Prospectus, handling and airmail reply) write, naming your school, to: Dept. T, ASIS, 22 Ave. de la Liberte, Luxembourg City, Grand Duchy of Luxembourg. The first 8000 inquiries receive a \$1 coupon towards the purchase of the new student travel book, Earn, Learn & Travel in Europe.

<p>THE ANSWER: <b>A LOT OF BUNK</b> Wayne Ortolani, Univ. of Houston</p> <p>THE QUESTION: What does an enormous cowboy sleep in?</p>	<p>THE ANSWER: <i>The Eternal Triangle</i> James Lipo, Marquette Univ.</p> <p>THE QUESTION: What is bound to last longer than an ordinary triangle?</p>	<p>THE ANSWER: <b>Ticker Tape</b> Hank M. Glaser, Queens Coll.</p> <p>THE QUESTION: What's the layman's term for the electrocardiograph machine?</p>
<p>THE ANSWER: <b>H<sub>2</sub>O</b> P. J. Morris, Univ. of Detroit</p> <p>THE QUESTION: In what section of the alphabet do the letters i, j, k, l, m, n belong?</p>	<p>THE ANSWER: <b>HAMMURABI'S CODE</b> John Bettinus, Univ. of So. Cal.</p> <p>THE QUESTION: Whaddid missus Hammurabi catch?</p>	<p>THE ANSWER: <b>LEFT WING</b> Robert T. Marsh, Jr., Mass. Inst. of Tech.</p> <p>THE QUESTION: What does an albatross use to signal a left turn?</p>

THE ANSWER IS:

# Get Lucky

the taste to start with... the taste to stay with

THE QUESTION IS: WHAT DO YOU GET WHEN YOU REQUEST A PACK OF THE MOST POPULAR REGULAR-SIZE CIGARETTE AMONG COLLEGE STUDENTS? Right! You get Lucky; you get the fine-tobacco taste of Lucky Strike. This great taste is the best reason to choose Luckies... the big reason why Lucky smokers stay Lucky smokers. So get with it. Get Lucky today!



Product of The American Tobacco Company - "Tobacco is our middle name"

Vol. 11  
He  
Sp  
TH  
partme  
DOWN  
surpris  
Health  
De  
Set  
Aut  
Late  
lege fa  
author  
most p  
of Stud  
Dean  
College  
Utah la  
autobiog  
Wives."  
The  
is know  
"Willow  
Dean, "  
da and  
When  
ment, t  
do, rep  
ya."  
Dean  
i.e. Lat  
Relation  
write th  
mous as  
drens' t  
When  
gher if  
write th  
"Absolu  
"Posi  
torted t  
The  
duo is  
in the  
sounde  
oly. A  
layout  
steep.  
it to  
maker.