

**Booters  
Defeat  
LIU, 4-2**

# THE CAMPUS

See  
Page  
8

Undergraduate Newspaper of the City College Since 1907

DL 109—No. 6

TUESDAY, OCTOBER 10, 1961

401

Supported by Student Fees

## Callagher's Coming East For Dinner on Nov. 14

By Bob Jacobson

Former President Buell G. Callagher is coming back—  
for a day. He will speak at the Alumni Association's eighty-  
first annual dinner November 14 at the Hotel Astor.



DR. BUELL G. GALLAGHER

Dr. Callagher, who left the College last August to become the first chancellor of the California state college system, will receive the Alumni's John H. Finley medal.

The news of Dr. Callagher's scheduled appearance was announced by him yesterday in a telephone interview with *The Campus*.

The former president has been under severe public attack by student and local California newspapers because, as he put it, "I'm a liberal."

He spoke freely of these attacks — he has been accused, he said, of being "in close collaboration with Moscow" — and categorized them as being part of  
(Continued on Page 3)

## Rabbi Says Hillel Will Appeal If SG Challenges Constitution

By Ralph Blumenthal

Hillel will maintain its qualifications for office-holding even if it means finally having to be called a religious organization, Rabbi Arthur Zuckerman said at a Hillel seminar Sunday



RABBI ARTHUR ZUCKERMAN

"We are at the beginning of the struggle," he said, "and I am prepared to take this struggle to the General Faculty," the College's highest appeals body.

"Because we are a 'committed' organization we have the right to set up qualifications for officeholders," he maintained before the group of about fifty members and prospective members from the College gathered at Pearl River, N.Y.

A "committed" organization, according to the Rabbi, is one dedicated to a complete philosophy of life.

If Hillel is denied its claim, it would have itself considered "religious" rather than abandon the right to require qualifications for office-holding, the Rabbi said. However, the official "pigeon-holing" of Hillel as "religious, wouldn't affect our image or purposes one whit," he added.

The controversial qualifications require that an officer or Hillel representative on campus sign an "Affirmation of Identity" with the Jewish people. The Student Government by-laws prohibit religious tests to all but religious organizations — a title which according to Hillel does not adequately describe it.

Therefore, when the organization submits its constitution to SG on November 1, either its qualifications policy will be upheld or Hillel will be asked either to abandon it or call itself a "religious" organization.

However, the Rabbi is prepared to appeal SG's decision should it rule against Hillel.

Rabbi Zuckerman believes that "SG will come to see Hillel as a 'committed' organization on the same level as Christian religious clubs and therefore entitle it to the same exemptions."

During the late afternoon session of the seminar, Rabbi Zuckerman said that for Hillel to declare itself "religious" would be to "surrender the Jewish conception of religion." Ancient Judaism, he explained, integrated religion into every phase of life in contrast to Christianity which separates church and state.

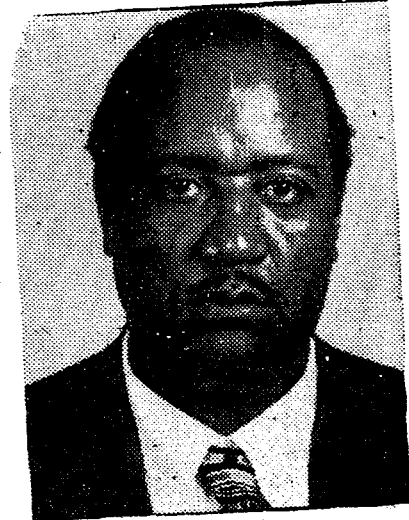
By designating some organizations as "religious" he implied SG is employing the Christian view of  
(Continued on Page 5)

## CU Presidents Set to Review Speaker Ban

The Administrative Council of Municipal College Presidents will meet today at 1 to decide "the status of the Communist Party" under the Board of Higher Education's speaker regulations.

According to Dr. John R. Everett, chancellor of the City University, "under a New Supreme Court decision which was made in early July, the status of this party is different than it was in April . . . when the Smith Act Ban was lifted."

The Supreme Court decision upheld laws which make anyone who knowingly becomes a member of the Communist Party liable for a jail sentence. The laws also



BEN DAVIS, Secretary of the Communist Party, was prevented from speaking at Queens College.

require Communist groups to register with the government under penalty of a five-year jail sentence and a \$5,000 fine for each day of delinquency.

Queens College President, Harold W. Stoke, who cancelled yesterday the scheduled appearance at Queens College today of Benjamin Davis, executive secretary of the Communist Party, initiated the action before the Administrative Council. Davis had been invited to Queens by its Marxist Discussion Club.

President Stoke stated that he suspended the invitation because of the recent court decisions. He requested the Council to "review present policy affecting the appearance of speakers" on municipal college campuses.

President Stoke's action was prompted, according to a report in the *New York Post*, by the objection of seven Queens County civic groups and several state assemblymen.

The report quotes a telegram  
(Continued on Page 5)

## Student Self-Government Extent of Future Reorganization Examined

By Vic Grossfeld

What is a City College student?

He may be someone who was rejected by Harvard.

Or he may be someone who couldn't afford to go to an out-of-town college. Or someone who is ashamed of his school because it doesn't have a football team.

Maybe he's an economics major who joins Alpha Epsilon Pi to make contacts and drink beer.

He might be a communist.

He probably is a liberal.

And he probably doesn't give a damn about Student Government.

He probably thinks "reorganization" is just another word that has no letters more than "delicateness."

He might be right.

He probably isn't.

But this term, this same student may well decide the future of the college's student activities.

What is being reorganized? The



MR. IRWIN BROWNSTEIN says community government could be effectively adapted to the College.

complete system of student self-government here.

Why? Because a renaissance of responsibility is taking place within

it. However, the restrictions which have shackled the "old" ineffective body still exist.

The big question now is: How is it being reorganized? A new Student Government constitution which attempts to give the student powers and responsibilities commensurate with his position in the college community is expected to be the main basis of discussion at Student Council meetings for several weeks.

This can be done by examining theories and concepts of student government and seeing how they work at other schools.

Probably the most progressive and democratic theory in student government today is the community system. It is based on the idea that the college is a community made up of the students, the faculty and the administration. It holds that each member is entitled to a say on all things which concern the community as a whole.

According to Mr. Irwin Brownstein (Student Life), who is preparing a doctorate thesis on student activities, the community system, though more easily adaptable at a small college, could function effectively here.

In colleges such as Antioch, Bard and Pomona the students as well as the faculty and the administration  
(Continued on Page 4)

## Reaction to Kennedy and Castro Mixed At Showing of Films on Cuban Invasion

By Barry Riff

Amid a background of Cuban patriotic songs, classic music and jazz, Cuba was invaded by counter-revolutionaries last Thursday — on film.

In a program sponsored by the college's Fair Play for Cuba Committee, three films—"The Invasion of Cuba," "Reaction to the Invasion around the World," and "The May Day Celebration in the First Socialist Republic in America"—were shown. They were obtained by the National Fair Play for Cuba Committee.

Throughout the films, which showed Cuban soldiers fighting off invading "mercenaries" from the United States, and massive demonstrations in support of Premier

Fidel Castro, there was a mixed reaction in the audience of approximately seventy students.

When President Kennedy, whose government was characterized in the films as Fascist and imperialist, was shown speaking to the press about the invasion, he was greeted with both hissing and applause from the student audience. However, when Russian demonstrations in support of Cuba were shown, laughter filled the room.

After the films, the meeting was thrown open for questions about the program. However, only one was raised:

"Are there any Fair Play for America Clubs in Cuba?" asked a student in the first row.

## Cafeterias Net Profit of \$20,000

A cafeteria financial report issued yesterday revealed that the faculty dining room on the south campus showed a loss of over \$800 for the year ending last June. The student cafeteria had a net profit of over \$20,000.

Both the student cafeterias and the faculty dining rooms serve the same quality food at the same prices, however, the faculty dining room has waitress service and condiments on the tables.

The report showed that operating expenses of the faculty dining room were more than the sales profit, while the operating expenses of the student cafeterias, despite recent renovations, were more than 10% under the sales profit.

# JOLSON '61

DESIRES MERGER. WE HAVE  
A ROOM IN MIDTOWN  
MANHATTAN.

Call:  
ELLIOT SILVERSTEIN  
Jerome 6-1465  
(Weekdays after 6 P.M.)

# PARK '64

Wishes to meet or form a  
Freshman Sister House pre-  
ferably from Brooklyn.

**OBJECT: TOGETHERNESS**

Please Contact:  
JOHN — CL 9-3798  
BRUCE — PR 8-4919

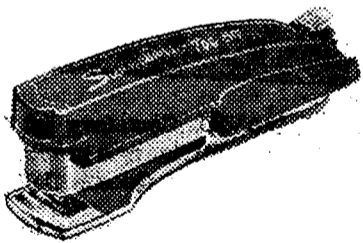
# OPPORTUNITY FOR MEN

Large nationally known concern  
has part-time positions available  
in our Promotion and Advertising  
Division. If you have difficulty in  
obtaining employment because of  
study requirements, we may have  
a job for you. Working hours are  
adjusted to daily student daily  
schedule at interview. \$50.00 base  
guaranteed if we find you accept-  
able. Only requirements: must be  
able to work 2 evenings a week  
and Saturday or 3 evenings a  
week. Must be over 18, person-  
able and willing to work. For  
applications, call:

MR. BURKE at OX 5-8731  
Before 5 P.M.



Medusa was once heard to rave:  
"A new hair-do is just what I crave,  
With my Swingline I'll tack  
All these snakes front to back,  
And invent the first permanent wave!"



# SWINGLINE STAPLER

no bigger than  
a pack of gum!

**98¢**  
(including 1000 staples)

- Unconditionally Guaranteed
- Made in America!
  - Tot 50 refills always available!
  - Buy it at your stationery, variety or bookstore dealer!

**Swingline INC.**  
Long Island City 1, New York  
WORLD'S LARGEST MANUFACTURER  
OF STAPLERS FOR HOME AND OFFICE

## SIGMA PI ALPHA

Non-Sectarian, Non-Hazing Fraternity  
Invites All Lower Classmen to its  
**SEMI ANNUAL  
SMOKER**  
FRIDAY, OCTOBER 13, 1961—8:30 P.M.  
234 West 27th Street

## KAPPA PHI OMEGA SMOKER

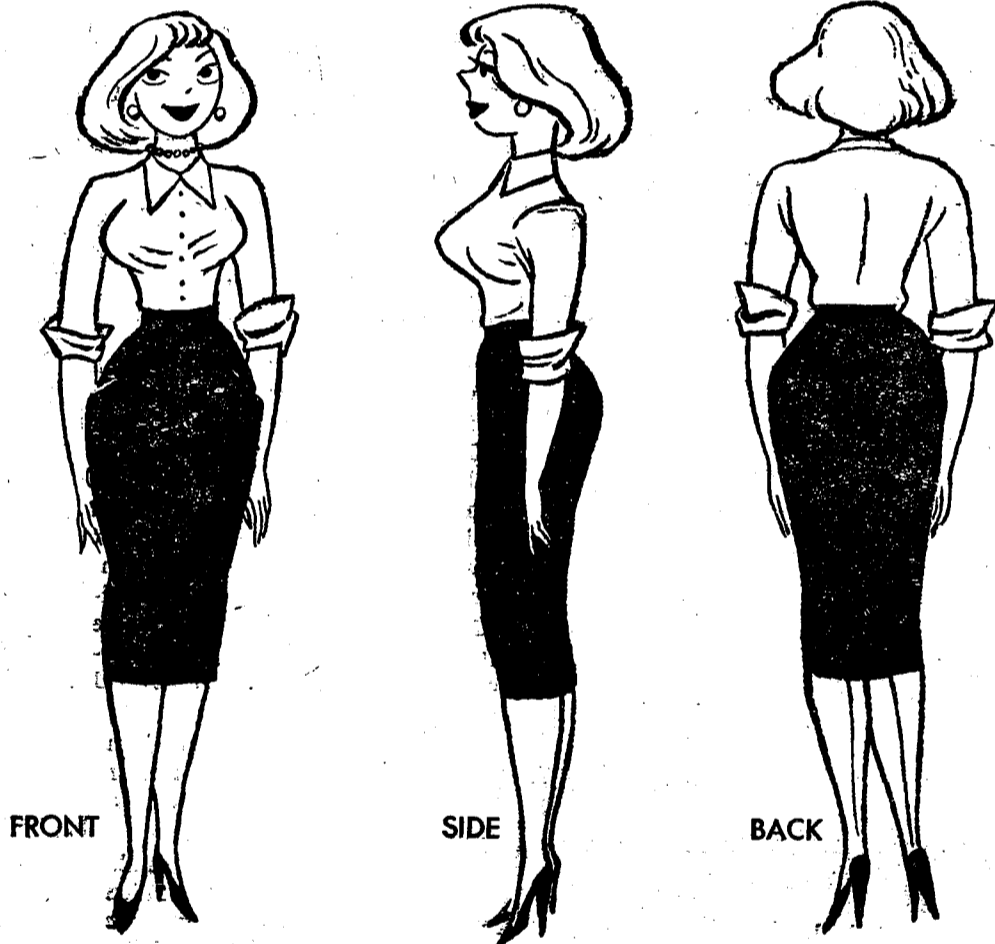
KARATE EXHIBITION — FENCING EXHIBITION  
FOLK SINGING AND REFRESHMENTS  
FRIDAY, OCT. 20 85 FLATBUSH AVE.  
9:00 P.M. BROOKLYN  
ST. 3-9152

# Sorry Fellows

Only **NON**-fraternity men will  
be allowed to pledge this term.  
But **ALL** are invite to the  
**Sigma Beta Phi**  
**SMOKER**  
FRIDAY 13th 8:30 P.M.  
36 WEST 21st STREET

# Girl Watcher's Guide

Presented by Pall Mall Famous Cigarettes



Three views of an average, healthy girl

## LESSON 1 - How to recognize a girl

It is not surprising, in these days of constantly changing fashion standards, that girls are often mistaken for men. Certain popular items of apparel, such as slacks, baggy sweaters and boxy suits, contribute to this unfortunate situation. Therefore, we suggest that new students of girl watching start with the fundamentals (see above diagram). As you can see, girls are easiest

to identify from the side. However, even the beginner will soon achieve proficiency from front and rear as well. Advanced students can usually tell a girl from a man at five hundred paces, even when both are wearing asbestos firefighting suits. (You might try offering the subject a Pall Mall, but you won't prove anything. It's an extremely popular brand with both sexes.)

**WHY BE AN AMATEUR?  
JOIN THE AMERICAN SOCIETY  
OF GIRL WATCHERS NOW!**

**FREE MEMBERSHIP CARD.** Visit the editorial office of this publication for a free membership card in the world's only society devoted to discreet, but relentless, girl watching. Constitution of the society on reverse side of card.

This ad based on the book, "The Girl Watcher's Guide." Text: Copyright by Donald J. Sauers. Drawings: Copyright by Eldon Dedini. Reprinted by permission of Harper & Brothers.

©AT Co. Product of The American Tobacco Company "Tobacco is our middle name"



Pall Mall's  
natural mildness  
is so good  
to your taste!

So smooth, so satisfying,  
so downright smokeable!

# B(i)G House - Up for Rent

## Brick Residence Awaits Tenant - Rivlin: No

By Sandy Wadler

A television aerial sits on the roof of an empty house on the campus at 133rd Street and Convent Avenue. The set itself no longer occupies its place in the fair-sized living room—now bare of its white carpet and mirrors.

For nine years, former president Buell G. Gallagher and his wife occupied the compact six-room house, which they rented from the City for an undisclosed amount. Since Dr. Gallagher's departure last August to become chancellor of the California State college system, the house has remained empty—save several venetian blinds and a mat shoved against a door just inside the front door. According to Public Relations Director I. E. Levine, the presidential residence will remain unoccupied until "the next president decides to there."

As for Acting President Harry Rivlin, he expressed his views on



The house that Former President Buell G. Gallagher rented.

Dr. Rivlin said he had no intentions of uprooting himself after living in Queens for over twenty years.

Dr. Gallagher, who was the first of the College's presidents to occupy the brick house, moved in when the south campus was purchased in 1952, even though the campus was

not opened until 1955. According to Mr. Arthur Fleming (Buildings and Grounds), Dr. Gallagher "took care of it just as if it were his own." Mr. Fleming said he often saw the former president shoveling snow off his walk and tending to the grounds behind the house.

Meanwhile, the grounds and the house itself are being maintained by Mr. Fleming and crew, and remains dolefully empty with its blinds and mats and TV aerial.

## Gallagher

(Continued from Page 1)

the normal process of getting acquainted."

He attributed most of the criticism, which has included demands for his removal from office, to "numerous quotations taken out of context" which made him appear to be a "Communist, a Communist sympathizer, at best."

Noting that various organizations of college teachers in the state have come to his support,

Gallagher indicated that he was no more surprised by criticism from "the far right" in California than he was by criticism from "the far left" when he was at the College.

Asked whether he had a preference for one kind of criticism, he said: "We'll take both."

The former president said he had not been in contact with the College since his departure but requested that students here be given his "very warm greetings."

Dr. Gallagher said he probably could deliver "a few remarks" at the Alumni dinner, although he had not been asked formally to speak. The keynote speaker of the evening will be Dr. James E. Allison, the state commissioner of education.

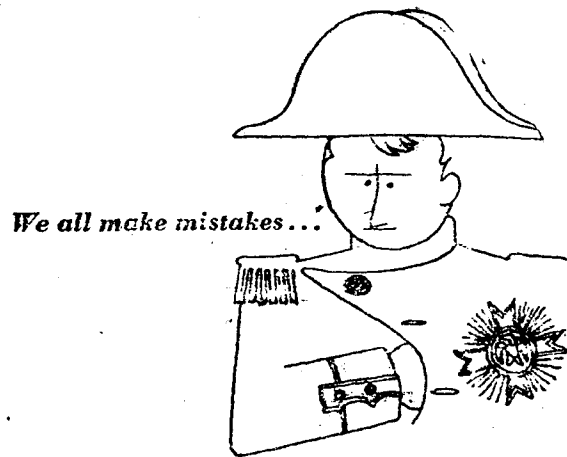
## Prof. Warns West in Imperialist Past

The West has a definite disadvantage in the cold war because its best record of imperialism is still vivid in the minds of many leaders of the neutral nations, an expert on contemporary ideologies told the Story Society last Thursday.

Labeling our part in the Cuban affairs "imperialistic," Dr. Wallace Kolsky, a former professor at the College maintained that the cold war will be won by those who are able to win the confidence of the newly emerging nations as well as the uncommitted nations of the world.

"The poverty of these nations is not solely due to western imperialism, but rather to the cumulative cycle of poverty within the countries," he said. "Our aid will be of no value unless the countries themselves make an effort at self-improvement," but "no nation can possibly pull itself up by its own bootstraps," he asserted.

—Zimmerman

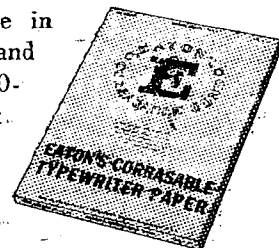


## ERASE WITHOUT A TRACE ON EATON'S CORRASABLE BOND

Don't meet your Waterloo at the typewriter—perfectly typed papers begin with Corrasable! You can rub out typing errors with just an ordinary pencil eraser. It's that simple to erase without a trace on Corrasable. Saves time, temper, and money!

Your choice of Corrasable in light, medium, heavy weights and Onion Skin in handy 100-sheet packets and 500-sheet boxes. Only Eaton makes Corrasable.

A Berkshire Typewriter Paper



EATON PAPER CORPORATION PITTSFIELD, MASS.

## SPECIAL OFFER...

# For 2-Headed Pipe Collectors

Genuine imported hand-carved cherrywood pipe... that really smokes!

Only \$1.00

This unique two-headed pipe is a real conversation piece... a must for your collection! Hand-carved in the Italian Alps and finished in gay colors. Stands alone on its own tiny legs. Ideal for your desk, mantel, or bookshelf... mighty good smoking, too! This is a wonderful value! Send for your two-headed pipe today!



and picture of Sir Walter Raleigh from new pouch pack

NOW Sir Walter Raleigh in the new pouch pack keeps tobacco 44% fresher!

Choice Kentucky Burley—Extra Aged! Smells grand! Packs right! Smokes sweet! Can't bite!

Shown Approximately 2/3 Actual Size

Clip Coupon..

Mail Today!

Sir Walter Raleigh Box 303 Louisville 1, Kentucky

NAME \_\_\_\_\_ ADDRESS \_\_\_\_\_ CITY \_\_\_\_\_ ZONE \_\_\_\_\_ STATE \_\_\_\_\_ COLLEGE \_\_\_\_\_

\* This offer good only in U.S.A. Not valid in states where prohibited, taxed or otherwise restricted. Offer expires June 30, 1962. Allow four weeks for delivery.



**OUR "346" SPORT JACKETS**  
in exclusive new Fall colorings

The good-looking light and medium-weight tweeds of our "346" sport jackets are woven exclusively for us in our own designs and colorings... and the jackets themselves cut and made on our 3-button model with welted edges. In Glenurquhart plaids, herringbones and fancy stripes... featuring new soft colorings in browns, greys or olives, \$65 and \$75

Also our "346" flannel Odd Trousers, \$26.50

ESTABLISHED 1818

**Brooks Brothers,**  
**CLOTHING**  
Men's Furnishings, Hats & Shoes

346 MADISON AVE., COR. 44TH ST., NEW YORK 17, N. Y.  
46 NEWBURY, COR. BERKELEY ST., BOSTON 16, MASS.  
PITTSBURGH • CHICAGO • SAN FRANCISCO • LOS ANGELES

# THE CAMPUS

## Undergraduate Newspaper Of The City College

Since 1907

### Published Semi-Weekly

VOL. 109—No. 6

Supported by Student Fees

**The Managing Board:**

BOB JACOBSON '62 Editor-in-Chief	
VIC GROSSFELD '62 Technical Consultant	SUE SOLET '62 Associate Editor
BRUCE SOLOMON '62 Associate Editor	VIOLA WILLIAMS '63 Business Manager
RALPH BLUMENTHAL '62 News Editor	
ART BLOOM '62 Sports Editor	SANDY WADLER '62 Features Editor
LEONARD SUDAKIN '62 Copy Editor	LIBBY ZIMMERMAN '64 Copy Editor

NEWS STAFF: Sue Cowan '64, Nimrod Daley '64, Morris Danon '64, Effie Gang '64, Roz Kobrin '64, Eileen Kushner '63, Miriam Mazzola '63, Bob Rosenblatt '63, Manny Schwam '62, Jay Stanley '64.

SPORTS STAFF: Marion Budner '64, Gerry Gottlieb '64, Mike Joseph '64, Ken Koppel '64, Barry Riff '64, Harvey Wandler '63.

CONTRIBUTING BOARD: Barbara Blumenstein '62, Barbara Bromfeld '63, Lois Kalus '62, Fred Martin '62, Jerry Posman '63.

PHOTOGRAPHER: Harris MacBeth '62.

Phone: FO 8-7426

FACULTY ADVISOR: Mr. Jerome Gold

Editorial Policy Is Determined by a Majority Vote of the Managing Board.

## Chance to Buy Freedom

The College's students will have the opportunity on Friday to help pull the Freedom Ride movement out of debt when the Congress of Racial Equality holds a rally on the south campus lawn, inaugurating two days of fund-raising. We welcome the opportunity.

THE CAMPUS fully endorses the rally and its purpose. Through such rallies held all over the country, CORE—in conjunction with the National Association for the Advancement of Colored People and other liberal social action groups—hopes to raise enough money to keep posting bail for arrested Freedom Riders!

Without this money two students at the College, arrested last summer as Freedom Riders, may have to interrupt their education for a prison term. Thus the campaign's relation to the College is clear-cut.

For those who would still question its application to students, we cite the country-wide student campaigns against segregation—sit-ins, wade-ins, stand-ins and kneel-ins.

But CORE's campaign is bigger than the College or even all the students in all the colleges in the country. With such causes as CORE's, rides the basis of our democracy.

The CORE rally should however, be distinguished from the drive to aid the "Monroe Defendants," advertised as a drive to "collect food and clothing for the Negro Community of Monroe, North Carolina." Although both campaigns have been endorsed by Student Council, the Student Government Executive Committee has seen fit to withhold implementation of the Monroe Committee's drive until its backing and leadership have been ascertained.

CORE's motives, are unquestionable; its record in attempting to insure equality of opportunity for all people is unimpugned.

We urge all students to attend Friday's rally and to contribute generously for freedom.

## Shades of a Former President

It gives one just a little more insight into the kind of man Former President Buell G. Gallagher really is to listen to him explain the public abuse he has been taking out west. With what sounded like a verbal wink of the eye, Dr. Gallagher in effect said yesterday that be it right, left or center, as long as he holds administrative office in the collegiate world he expects to be open to criticism.

During his nine-year stay at the College, Dr. Gallagher earned much praise—and some serious criticism too—for his admittedly liberal stands. In extreme instances, however, he was even charged with "red-baiting." Now our California friends are calling him a Communist.

Peter Steinberg might get a chuckle out of that, but perhaps the whole thing deserves some serious introspection on the part of avowed critics of college presidents:

## Reorganization

(Continued from Page 1)

tion have a say on such problems as admission standards, appointments and evaluation of faculty, curriculum, finances and extra-curricular activities.

One of the most important things which this system tends to accomplish is a fusion of the administration, faculty and students into a homogenous group.

Another system of student government is the "spheres of control" setup. It is favored by most of the College's student leaders and is widespread in this country. It is employed successfully by Vassar College, Sweet Briar College and Denison College.

Under this system the activities at a College are placed in three categories — matters concerning solely students, those concerning solely faculty and administration, and those of joint concern.

Mr. Brownstein emphasizes that under this system, "there is a distinct area set aside for the students either to run successfully or to botch up. It is their area of concern and faculty keeps out."

At Vassar the spheres of control are divided as follows:

- Faculty—admissions, curriculum, library, public relations, physical plant, etc.
- Students—extra-curricular activities and their budget.
- Joint-control—college calendar, social regulations, freshman orientation, etc.

The new SG constitution, which was proposed last term by a special student committee, embodies a similar system.

It implies that SG should have complete control in the area of student activities and the allocation of student fees. Although it does not set aside a faculty sphere and a joint sphere of control, it does provide that the Student Council shall "make recommendations to the President and the Faculty concerning the affairs of the College."

According to a report issued in December, 1956, by the American Council on Education, the spheres-of-control system has sometimes developed into the community type of government.

This could occur, the report says, when the student government "shows a continuing attempt . . . to gain more and more positions on faculty or faculty-administration committees." This has been a definite trend at the College in recent terms.

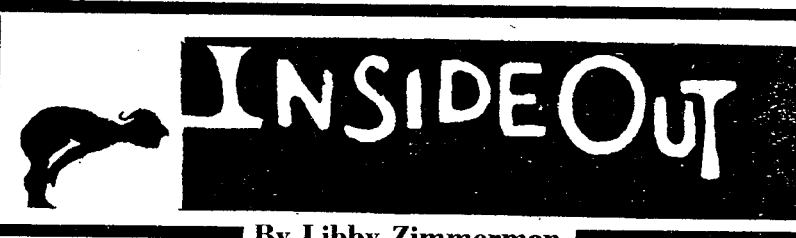
The need for a spheres-of-control stage in the evolutionary process is apparent, the report continues, because the faculty, in granting students power, must have confidence that the "right result will be obtained."

Here, the granting of charters to clubs is one of the areas in which a progressive trend has appeared. A survey of methods of chartering which was printed in the ACE report reveals that 227 of 462 SG Presidents questioned noted chartering procedures which gave the student less control than he has here. There were 12 systems found to be more progressive, while 73 had similar setups.

The report states that student activities "traditionally . . . have been the responsibility of a student-faculty committee . . . subject to administrative review which ranges from authoritarian to *laissez-faire*."

At the College, the original responsibility lies solely with the students—subject to both student-faculty and administrative review.

This is the first in a series of articles on Student Government and the proposals for its reorganization.



By Libby Zimmerman

Cigarette smoke slowly wafted out of brightly lit windows of Fin the other night. The deserted south campus lawn was strewn with day's papers. There were stars out but no one was looking at them except for one lonely astronomy student who was searching for the big dipper. Inside thousands were searching for . . . something else.

Where and what is that elusive something, that slender something that the well dressed people, desperately trying to look happy, pretend they had found?

Why do we drown ourselves in extra-curricular activities and maintain that we have no time for studying? Why is the south campus lawn so crowded these golden days and the Library so empty?

Mr. Marvin Gettelman's political science course, for example is well designed to stimulate the lazy student with a detailed biography of ex books to read yet only half the class has read the required assignments.

We are all groping and looking and yet too many of us seem to loathe to search inside the hard covers of a textbook.

The world of introspect is foreign and new to us and we are afraid. The south campus lawn and a dedication to *The Campus* is not an answer to our fears.

No, I don't know the answer either. But maybe if we found *Jo Galt* the whole thing would be cleared up.

\* \* \*

The coeds have triumphed again—or have they? For the first time in the history of the College a regular course in fencing is being offered this term to 31 members of the fair sex. But the triumph is riddled with defeat, for these girls have lost the right to use the Park Gym. Either they must come to school dressed for the course in slacks or dungarees and black turtle-necks and run the risk of being labeled "beat", or they must take their chances and improvise dressing rooms wherever possible.

## Letters to the Editor

### NOT A 'LIBERAL'

To the Editor:

I am writing concerning the story appearing in *The Campus* on October 6, headlined "Mazelis Quits." The phrase to which I feel compelled to take exception is the one referring to me as a "leader of the liberal forces." I have nothing but the utmost respect for sincere liberals and on many issues, especially those which confront Student Council, I am in agreement with them.

My three terms on Council were fruitful ones, largely because of the co-operation between students of differing political views on the issues of civil rights and civil liberties.

However, in the interest of clearing up any misunderstanding, let me say that I have never called myself a liberal and do not consider myself a liberal, and am not ashamed of my political views.

One of the reasons for the friendly co-operation on Council, was that my fellow Council members knew that I was not masquerading and that I honestly differed with them on many political issues.

I am a radical and a socialist and see nothing wrong with these terms. I feel that eventually, the existing system in our country must be radically changed to bring about a truly just and more democratic society. This view naturally determines many of my attitudes on specific issues. At the College, I strenuously opposed (former) President (Buell G.) Gallagher's red-baiting, although I certainly disagree with the Communist Party and many of the aspects of the Soviet Union.

The reasons for my reluctant resignation from Council were academic—in that I have a very heavy program this term, and economic—since I am working outside of school. I look forward to the continuing evolution of the American student movement to the day when it will no longer restrict itself to narrow limits but will concern itself, as students in other countries do, with the vital issues of their country and the world.

Jack Mazelis '62

October 6,

### NOT JUST HIS FAULT

To the Editor:

I am disturbed by the charges and counter-charges leveled in the last issue of *The Campus* in your lead story concerning the delinquent in fee allocations.

As a member of the Student Government Fee Commission last term, I served under Fred Brennan, then SG Treasurer. The members of the commission were aware of the many difficulties encountered in its work. Hence, it was with surprise that I read of Werner Cherwin's charges against Mr. Brennan. Miss Cherwin, herself a member of the Fee Commission, was fully informed of the problem which Mr. Brennan and the commission faced.

Speaking from past experience dating from my initial service as a freshman representative on Student Council in the fall of 1958, and from my subsequent and varied participation in co-curricular activities since that time, I can knowingly say that fee allocation delinquencies are not at all unusual! In past years, the Student-Faculty Fee Commission usually never got around to consider all requests at its end-of-the-term meeting. Many requests had to wait until the start of the new semester when SFFC met anew . . .

Mr. Brennan held many meetings, the commission and encouraged discussion of basic policy questions on fee allocations. Each commission member had the responsibility of interviewing club treasurers. This is contrasted with the former general practice of minimal use of the Fee Commission in interviewing and policy-making . . .

From what I've seen over the course of the past three years, Fred Brennan was as fair and as good an SG Treasurer as any of the past treasurers. Admittedly, he must be held responsible for the commission's actions for he was the one who was elected Treasurer by his fellow students. But if he is guilty of anything, his predecessors are at least as guilty as he. Yet no one has accused them any more!

Charles W. Gopen

October 9.

# Hillel to Appeal if SG Challenges Constitution

(Continued from Page 1)

tion and therefore, Hillel will agree to classify itself as "re-

However, more basic than Hillel's formation, according to Rabbi German, is Hillel's right to in-

is the meaning of the Affirmation of Identity card which he feels must be retained.

In the first session of the seminar, Yehoash Dworkin, Hillel's Assistant Director, contrasted the present controversy, which he termed "self-generated," to past controversies in which Hillel participated as an interested outside party.

He also cited Hillel's continued opposition to the College's policy of keeping membership lists of campus organizations. When questioned he contrasted Hillel's Affirmation of Identity with membership lists, pointing out that an outside authority without a real interest collects the lists. He said Hillel has a legitimate interest in keeping the "Identity" cards.

Referring to the present controversy, Rabbi Zuckerman called it "a good thing. It is important for American Jews to know how our ancient leaders felt—helpless before charges we know are false."

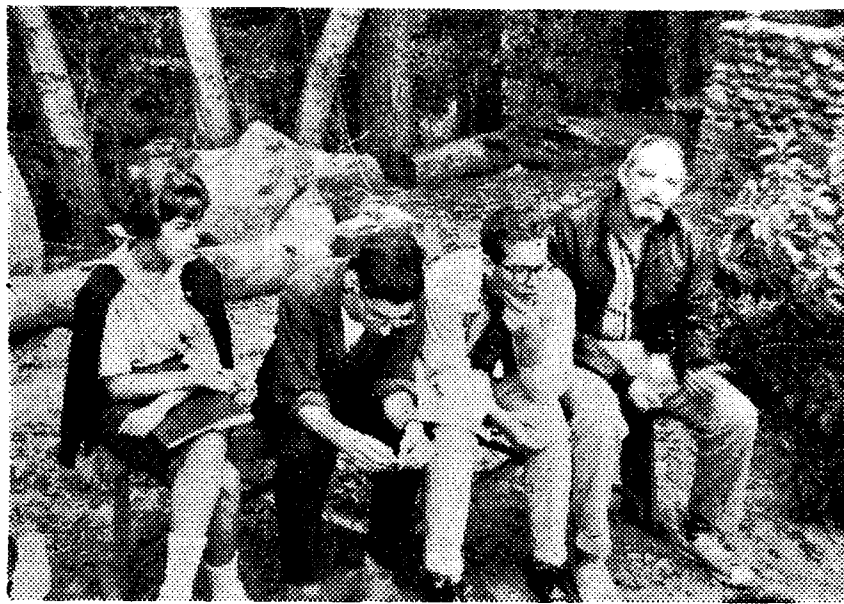
### Committee Elected

Hillel's Council yesterday elected a committee to frame a constitution in accordance with Student Council's request. The constitution will be compiled from 18 years of minutes and submitted to SG by November 1.

In addition, Hillel's Council reiterated the statement of its Executives that it "considers Hillel to have been chartered and to have been functioning as such since 1943," and "any statement contrary to this is incorrect."

### Class of '62

The Class of '62 will elect a Secretary, Treasurer and three students to its Council on Thursday at 12:30 in 307 Finley.



Participants in Hillel seminar at Pearl River Sunday were, l. to r. Leonore Leiblein, Ed Brody, Myron Bassman and Yehoash Dworkin.

## Blind Student Rejects Cane For Dog He Can 'Talk' To



Robert Rodriguez '65 with his seeing-eye dog, Dutchess. Photo by Sudakin

**FAULT** A man and his best friend emerge from Klapper Hall for a German class each at 12.

On Mondays the man, Robert Rodriguez '65, and his best friend, silky black seeing-eye dog Dutchess, proceed to the Students' Reading Room in Fred Br...

On their way, Rodriguez may encounter a cane instead. Last year, as a senior in Dubois High School in Manhattan, he argued enough to place ninth among debaters in a nation-wide commission, w...

Rodriguez wakes up at 5:30 in morning to walk Dutchess along Riverside Drive Park. Last year he didn't have Dutchess and a cane instead. But he found it too "impersonal". "You can't talk to canes, he explained.

He bought Dutchess six weeks before school began. Although he would have received funds for her from organizations, he believes that "if you can't pay for yourself, you're not independent."

Apparently the only problem Rodriguez has encountered at the college is directing his varied interests. There's the Debating Society and his folk music. But diving seems to be his great interest.

He considers himself an expert on diving gears, and acquired his interest from listening to Sea Hunt on television.

Dutchess attends classes with Rodriguez and sits or sleeps in his aisle besides him. She usually muzzled when on campus because students have appeared unaware of her harmless role.

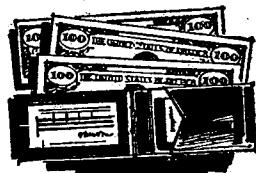
Rodriguez can recall only one instance when a student ran away from the dog and thinks that she and the students have adjusted well to one another.

There is naturally strong affection and concern between this man and his best friend. But if he's planning to give Rodriguez some food he'll warn you that Dutchess is likely to grab for herself.

—Kobrin

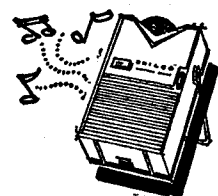
# Win \$100.00 a month for the entire school year with Sheaffer's "Pen Money" contest

### 2 FIRST PRIZES OF \$100 A MONTH



Winners (one man and one woman student) will receive a check for \$400 on Dec. 15th and \$100 a month beginning in January and ending in May.

### 25 SECOND PRIZES of a new Philco transistor radio



### IT'S EASY TO ENTER—EASY TO WIN! HERE'S ALL YOU DO

Just tell us in 25 words or less, what you like most about Sheaffer's all-new \$2.95 Cartridge Fountain Pen. Write your entry in ink on any sheet of paper, enclose it with the top from a package of Skrip cartridges, and mail it to: Sheaffer "Pen Money" Contest, P.O. Box 4399, Chicago 77, Illinois. Entries accompanied with your name, address, school name and class must be received by November 7, 1961.

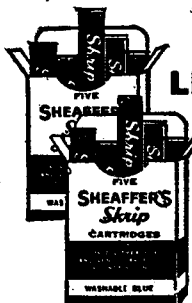
Entries will be judged on the basis of their believability and freshness of thought. Judges' decisions are final and all entries become the property of the W. A. Sheaffer Pen Company. None will be returned. In case of ties, duplicate prizes will be awarded.

Every college student in the United States may enter, except employees of W. A. Sheaffer Pen Company, its subsidiaries, its advertising agencies... the independent company judging entries... and members of their immediate families. Contest subject to federal, state and local regulations.

Winners will be notified by mail approximately four weeks after contest closes. List of winners available after close of contest if request is accompanied by stamped, self-addressed envelope.

Here are some of the things to keep in mind when you're writing about Sheaffer's all-new cartridge fountain pen

- For smooth, easy writing, there's no substitute for a Sheaffer fountain pen.
- Loads like a rifle with leakproof cartridges of world famous Skrip writing fluid.
- Fills quick, clean, easy... just drop a Skrip cartridge into barrel.
- Fits easily into a shirt pocket... comes in a choice of five smart colors.



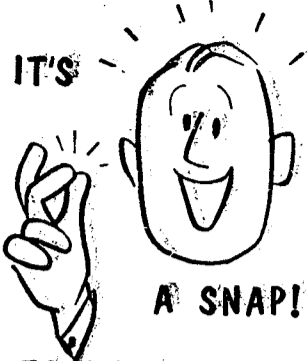
### SPECIAL! LIMITED TIME ONLY

Pen and 98c worth of Cartridges FREE \$3.93 Total Value for

## \$2.95

# SHEAFFER'S

©1961, W. A. SHEAFFER PEN COMPANY, PORT HADISON, IOWA



TO STUDY AND REVIEW WITH

**BARNES & NOBLE COLLEGE OUTLINE SERIES**

**Only the Best Is Good Enough!**  
ALL CO-EDS INVITED  
to the  
**PHI TAU ALPHA SORORITY RUSH**

Located at the  
**ZETA BETA TAU FRATERNITY HOUSE**  
54 Hamilton Place, corner 140th Street  
**WEDNESDAY, OCTOBER 11 — 7:30 P.M.**

**WANTED FRESHMAN COEDS**

Established Sophomore House desires swinging parties with girl houses.

Call: **MARK FELDMAN**  
DA 6-3938

**Perry '64**

**SIGMA ALPHA MU FRATERNITY**

Invites All Lower Classmen to  
**THE 105th SEMI-ANNUAL MAMMOTH SMOKER**

**Friday, October 13th, 8 P.M.**

**51 IRVING PLACE**  
17th St., bet. 3rd & 4th Aves.

**S.A.M. wants YOU!!**

**Let Friday the 13th be your LUCKY DAY!**  
ATTEND THE SMOKER OF  
**KAPPA RHO TAU FRATERNITY — ALPHA CHAPTER**  
NON-HAZING NON-SECTARIAN  
**Friday, October 13 at 8:30 P.M.**  
TIE and JACKET—PLEASE  
**803 AVENUE OF THE AMERICAS (between 27th and 28th Streets)**

Music Appreciation 1-A

**FINAL EXAMINATION**

- Which of the following singing groups is the most popular in the nation? a) The A & P Gypsies; b) Bob and Ray; c) W.C. Fields and Marie Dressler; d) The Kingston Trio; e) Merrill, Lynch, Pierce, Fenner and Smith; f) Anastas Mikoyan and His Hotshot Five. (Be astute.)
- Nick Reynolds and John Stewart are two of the Kingston Trio. Which of the following is the third member? a) Lamont Cranston; b) Morey Amsterdam; c) Ernesto "Che" Guevara; d) Bob Shane; e) Yuri Gagarin; f) Stan Freberg; g) Guy Fawkes; h) Charlie Brown; i) Clark Kent. (Be clever.)
- Which of the following is the title of the sensational new Kingston Trio album? a) Judy at Carnegie Hall; b) Sing-Along with Sonny Tufts; c) Stan Freberg Presents the United States of America; d) Close-Up/ The Kingston Trio; e) Eva Braun Sings Hitler's Favorites. (Be frank.)
- Explain why you flip over the following new numbers in the Kingston Trio/Close-Up album: a) Coming from the Mountains; b) Marni; c) Jesse James; d) Baby Boy; e) The Gypsy Rover; f) When My Love Was Here; g) Weeping Willow; h) Glorious Kingdom. (Be sincere.)
- Explain why you already have all the marvelous Kingston Trio albums. (Be proud.)
- Explain why you are frantically anxious to rush out to your friendly old record store and buy the new Kingston Trio album, "Close-Up". (Be enthusiastic.)
- If you plan to wait more than one week before getting the album, explain yourself. (Be careful.)



©CAPITOL RECORDS, INC.

Check your opinions against L&M's Campus Opinion Poll #7

**Who'd make the best wife?**



WOMAN EXECUTIVE    FASHION MODEL    NURSE    SECRETARY    TEACHER

**2 Is it better to marry in college-or wait till later?**

**3 How many cigarettes do you smoke a day?**



MARRY IN COLLEGE    WAIT TILL LATER

LESS THAN 8    8-12  
 13-17    18-22    OVER 22

Here's how 1383 students at 138 colleges voted!

**Start fresh Stay fresh with L&M**

Any way you look at them—L&M's taste better. Moisturized tobaccos make the difference! Yes, your taste stays fresh with L&M—they always treat you right!



*They always treat you right!*

Teacher	40.8%
Fashion Model	11.9%
Nurse	27.9%
Secretary	16.4%
Executive	3.0%
Marry in College	15.4%
Wait till later	84.6%
Less than 8	20%
8-12	18%
13-17	19%
18-22	28%
Over 22	15%
Whether you smoke a little or a lot, give your taste a break. Stay fresh with L&M.	

Try fresh tasting, best-tasting L&M today... in pack or box!

# ace Crushed y Nine, 17-0

On the same day—Saturday—  
at the Yankees won the third  
ne of the World Series, 3-2, at  
cinnati's Crosley Field, the  
lege's baseball team won its  
ond game of the season, 17-0,  
r Pace College at Prospect  
k.

It was quite a day for the  
avers — morale-wise — for  
y had lost a double-header to  
rdham University last week.  
e game lasted only four and a  
f innings because the College  
used up its playing time by  
n.

Left-hander Howie Friedman  
ed only 17 batters in hurling  
o-hitter. He struck out 14, hit  
o and allowed one infield  
under.

The Beavers smacked 15 hits  
ere led by catcher Bart  
zzita, who batted in five runs.  
omered over the leftfielder's  
d in the fourth with two men  
and belted a two-run double  
the third.

Rightfielder Lou Rubin batted  
two runs with a double in the  
st and a triple in the third.

## Harriers

(Continued from Page 8)

a time-trial race last week, did  
again for the books with a time  
29:23, which was fast enough  
first place.

ane, who hadn't run the five-  
e course until this year, fin-  
ed more than a hundred yards  
front of his closest rival, John  
ella of FDU.

Beaver co-captain Paul Lam-  
nos came in third, eighteen  
onds behind Avella. Also in-  
ded in the Beavers' score were  
ke Didyk, who placed tenth,  
Bill Casey the eleventh man.  
The last time a Beaver squad  
d an opponent was the first  
et of the 1952 season against  
ntclair State Teachers' Col-  
e.

### Summaries

Lesny Zane, CUNY	29:23
John Avella, FDU	29:51
Paul Lampros, FDU	30:09
Dick DeLeo, FDU	30:16
Bill Hill, CUNY	30:17
Jaime Artiz, Hunter	30:18
Charlie VanGeisen, FDU	31:00
Don Damm, FDU	31:00
Andy Price, FDU	31:26
Mike Didyk, CUNY	31:37
Bill Casey, CUNY	31:42
Ken Miller, Hunter	32:16
Julian Offsay, CUNY	32:25
Mike Pavlov, FDU	33:11
Mike Lester, CUNY	33:44
Ed Babb, Hunter	35:57
Harry Graham, Hunter	36:15
Tony Francosmo, Hunter	36:30

### How It Was Scored

NY	1, 3, 5, 10, 11-30
U	2, 4, 7, 8, 9-30
ater	6, 12, 16, 17, 18-69

## Scarlett

(Continued from Page 3)

into the arms of the hapless  
lie. Unfortunately he lost the  
somewhere along the way.  
Scarlett got on the ball near  
end of the first half when  
raced toward the net and  
oted in a pretty lead pass from  
right wing, George Lang, for  
first goal of the season.

Earle has only one reservation  
out playing inside on the for-  
ard line. "You always have to  
t up and head the ball," he said,  
nd since you're sure the other  
low will go up with you, you're  
ways afraid of crashing heads."

Scarlett had played at wing in  
gh school where he had less to  
defensively, but Karlin consid-  
inside right the ideal spot for  
n.

He and Henry Windiscmann  
e inside left] make a perfect  
ensive combination," says the  
ach.

# The Alpha Chapter of Kappa Rho Tau Fraternity

invites all those students who are interested  
in a truly different fraternity.

OUR SMOKER WILL BE HELD ON

TIE and JACKET—PLEASE

NON-HAZING

NON-SECTARIAN

# ALPHA MU SIGMA FRATERNITY

REQUESTS THE PLEASURE OF  
YOUR COMPANY AT ITS SEMI-ANNUAL

## Open House Smoker

DATE: Friday, October 13, 1961

TIME: 8:00 P.M.

PLACE: Beta House, 870 Sixth Ave., Manhattan (31st St.)

R.S.V.P.

# L-P RECORD SALE

## New Releases

SHOWS	List	SALE
WEST SIDE STORY (Movie)	4.98	3.09
GUNS OF NAVARONE	4.98	3.09
CARNIVAL	5.98	3.69
VAGABOND KING (complete)	4.98	3.09

JAZZ	List	SALE
FRIDAY NIGHT—Miles Davis	3.98	2.49
SATURDAY NIGHT—Miles Davis	3.98	2.49
GREATEST OF DIZZY GILLESPIE	3.98	2.49

POPS	List	SALE
JUMP UP CALYPSO—Belafonte	3.98	2.49
SWING ALONG WITH ME—Sinatra	4.98	3.09
PORTRAIT OF JOHNNY MATHIS	3.98	2.49

## CITY COLLEGE STORE

### SPECIAL COMPLIMENTARY OFFER FOR COLLEGE MEN

### Learn the Pleasures of Fine Tobacco...

Enjoy the Original Extra-Mild  
Cavendish in the  
Handy "Poly" Pocket Pouch



AMPHORA, is cool, even-burning, long-lasting. Its pleasur-  
able smoking qualities have won loyal friends—it outsells all  
other tobaccos in its class! If  
you haven't tried AMPHORA,  
be our guest. Simply fill in the  
coupon below and mail it. You  
will receive a complimentary  
full 2-ounce pouch.



ROMICK'S INTERNATIONAL TOBACCO CO.  
11918 Vose Street, North Hollywood, California  
Gentlemen: Please send me a complimentary full 2-ounce pouch of  
AMPHORA. I enclose 10¢ coin to cover cost of handling and mailing.  
(PLEASE TYPE OR PRINT)

NAME \_\_\_\_\_  
STREET \_\_\_\_\_  
CITY, ZONE, STATE \_\_\_\_\_  
UNIVERSITY \_\_\_\_\_

This Offer Expires December 31, 1961

# SIGN UP NOW! TAU DELTA PHI PIECE CORPS

Smoker with Refreshments PLUS  
FRIDAY NIGHT, OCTOBER 13th — 8:00 P.M.  
George Washington Hotel  
23rd St. and Lexington Ave., N.Y., N.Y.



## On Campus

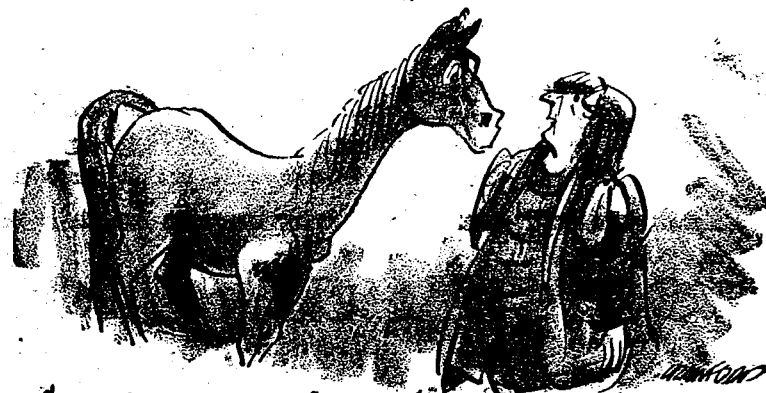
 with Max Shulman

(Author of "I Was a Teen-age Dwarf", "The Many Loves of Dobie Gillis", etc.)

## SAIL ON, SAIL ON!

I suppose October 12 is just another day to you. You get up in the ordinary way and do all the ordinary things you ordinarily do. You have your breakfast, you walk your ocelot, you go to classes, you write home for money, you burn the dean in effigy, you watch Howdy-Doody, and you go to bed. And do you give one little thought to the fact that October 12 is Columbus Day? No, you do not.

Nobody thinks about Columbus these days. Let us, there-  
fore, pause for a moment and retell his ever-glorious, endlessly stirring saga.



Columbus never wanted to clap eyes on a horse again...

Christopher Columbus was born in Genoa on August 25, 1451. His father, Ralph T. Columbus, was in the three-minute auto wash game. His mother, Eleanor (Swiftly) Columbus, was a sprinter. Christopher was an only child, except for his four brothers and eight sisters. With his father busy all day at the auto wash and his mother constantly away at track meets, young Columbus was left pretty much to his own devices. However, the lad did not sulk or brood. He was an avid reader and spent all his waking hours immersed in a book. Unfortunately, there was only one book in Genoa at the time—*Care of the Horse* by Aristotle—and after several years of reading *Care of the Horse*, Columbus grew restless. So when rumor reached him that there was another book in Barcelona, off he ran as fast as his fat little legs would carry him.

The rumor, alas, proved false. The only book in Barcelona was *Cuidar un Caballo* by Aristotle, which proved to be nothing more than a Spanish translation of *Care of the Horse*.

Bitterly disappointed, Columbus began to dream of going to India where, according to legend, there were thousands of books. But the only way to go to India was on horseback, and after so many years of reading *Care of the Horse*, Columbus never wanted to clap eyes on a horse again. Then a new thought struck him: perhaps it was possible to get to India by sea!

Fired with his revolutionary new idea, Columbus raced to the court of Ferdinand and Isabella on his little fat legs (Columbus, though six feet tall, was plagued with little fat legs all his life) and pleaded his case with such fervor that the rulers were persuaded.

On October 12, 1492, Columbus set foot on the New World. The following year he returned to Spain with a cargo of wonders never before seen in Europe—spices and metals and plants and flowers and—most wondrous of all—tobacco! Oh, what a sensation tobacco caused in Europe! The filter had long since been invented (by Aristotle, curiously enough) but nobody knew what to do with it. Now Columbus, the Great Discoverer, made still another great discovery: he took a filter, put tobacco in front of it, and invented the world's first filter cigarette!

Through the centuries filters have been steadily improved and so has tobacco, until today we have achieved the ultimate in the filter cigarette—Marlboro, of course! Oh, what a piece of work is Marlboro! Great tobacco, great filter, great smoke! And so, good friends, when next you enjoy a fine Marlboro Cigarette, give a thought to the plucky Genoese, Christopher Columbus, whose vision and perseverance made the whole lovely thing possible.

© 1961 Max Shulman

And thank Columbus too for the king-size Philip Morris Commander. If unfiltered cigarettes are your choice, you'll find Commander the choice of the unfiltered. Welcome aboard.

# Beavers Slip Past LIU, 4-2 Harriers Tie FDU as Zane Sets Reco

One thing the College's soccer team can't afford is to worry about opposing teams which are rated by the experts as pushovers.

But there were many anxious Beaver faces in Lewisohn Stadium Saturday as Long Island University, supposedly a "pushover," took its time before calling it quits on the losing end of a 4-2 count.

During most of the game, the Beavers seemed surprised when the well-rehearsed plays and patterns which had enabled them to trample Fort Schuyler by 7-0 last week were broken up easily by LIU's alert defensive line.

The Blackbirds' defense made only one slip in the first three periods of play. In the middle of the first quarter, an LIU fullback, attempting to clear the ball from the goal area with his

three periods. The game was won in the fourth quarter.

Knowing full well that a one-goal margin was hazardous, and that if it stayed that way, a 1-0 victory over LIU would not benefit a prospective championship team, the Beavers determined to bear down.

With 45 seconds gone in the final quarter, left wing Irwin Fox, standing fifty feet from the

LIU goal, intercepted a weak clearing kick and sent it back over the goalie's head into the net. It was his first goal of the year.

However, less than two minutes later LIU broke the ice with a boot by forward Paul Bertranc on an indirect free kick from Ray Klèveka.

The score stayed at 2-1 for ten minutes until the Beavers were

awarded a penalty kick because two husky LIU fullbacks had tried to make a cream cheese sandwich out of Tony Negavetti, the little center forward.

Henry Windischmann, who was elected to try the penalty kick, had the LIU goalie going the wrong way as the ball flew into the left corner of the net for what turned out to be the deciding goal.

Windischmann scored his second goal with seven minutes remaining when he duplicated Fox's long, high kick over the goalie's head. That made the score 4-1.

Blackbird goalie Machnik, who is only 5-6 and could jump only so high, was left on his back looking hopelessly up at the sky, while the exultant Beavers leaped on Windischmann to congratulate him on his third goal of the season.

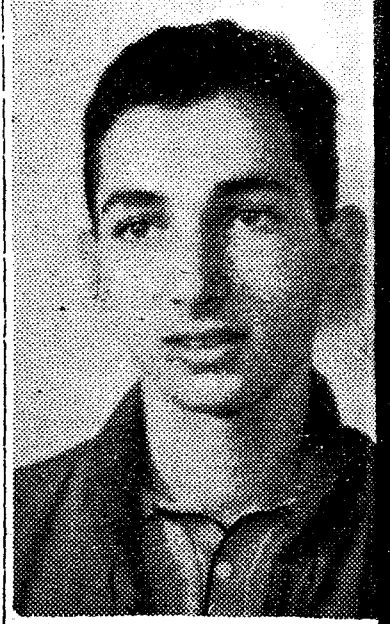
Scarlett deserved much of the credit for initiating Beaver attacks and breaking up many Blackbird attempts to get the ball within scoring range. He dribbled brilliantly, rarely losing the ball.

LIU coach Gary Rosenthal, when asked for his opinion of the College's team, said that it was not as good as some Beaver squads LIU has faced in past years. "In fact, the score on this game should really be 2-2," he said. He referred to Scarlett's early goal and the penalty kick as luck shots.

Beaver coach Harry Karlin felt his team had done satisfactorily. "The only weakness on this team is inexperience," he said. "Our defense played well, and when you come right down to it, LIU's two goals were the lucky ones."

It was LIU's second loss in three games. The Beavers take their 2-0 record to Brockport Saturday. The experts do not classify Brockport as "pushovers."

—Riff



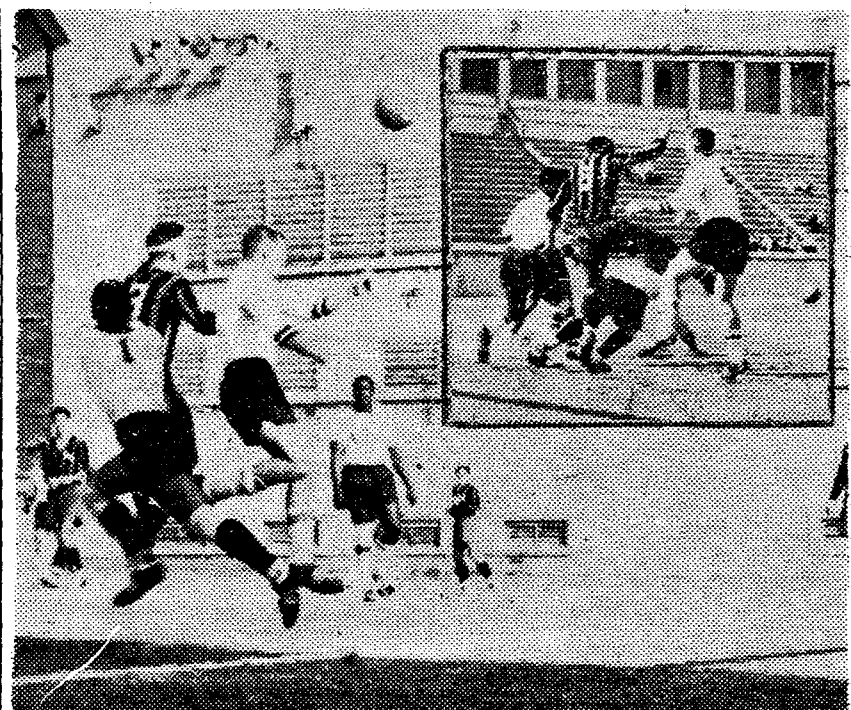
LENNY ZANE

It was just a matter of time — one second, in fact — that forced the College cross-country team to settle for a 30-30 tie with Fairleigh Dickinson University in an opener Saturday at Cortlandt Park. Hunt placed second in the triannual meet with 69 points.

The Beavers' Bill Hill, crossed the finish line fifth, only one second behind Fred Dick DeLeo. If their position had been reversed, the school would have been 29-31 in the ranking of the College.

Not only that, but sophomore Lenny Zane, who unofficially broke the College's mark of 26 minutes in the 100-yard dash, set a new record of 24.5 seconds.

(Continued on Page 7)



MAN IN THE MIDDLE: Beaver center forward Tony Negavetti is caught in traffic jams trying to clear the ball to teammates.

The Line Score

LIU	0 0 0 2-2
CCNY	1 0 0 3-4

head, let it get behind him. Earle Scarlett, the Beavers' inside right, ran in and booted its past goalie Joe Machnik, whose view was blocked by other defensemen. It gave the Beavers a 1-0 lead.

Fortunately for the booters, LIU did not have an equally proficient offense. The Blackbirds didn't score at all in the first

## Booter 'Falls Down' on Job

By Art Bloom

Nobody knows what a Beaver soccer game looks like from the ground up better than a man who has bitten the dust more in two games than the average television Indian does in ten cavalry charges.

It's not that Earle Scarlett, the Beavers' lanky inside right, likes getting knocked down by opposing players. It's just that the opposition is too slow getting out of the

before I get hurt, but it's my style of play."

But Scarlett has never really gotten hurt rambling through the opponent's defense or wrecking its attacks. The only time he was shaken up was in the Brooklyn game last year when, with the score tied 2-2 in the third quarter, he tried to get around a husky defenseman.

"I was almost around this fullback when he stuck out his foot and tripped me," Earle recalls. "He really put me down."

But Earle was hurt more by the Beavers' loss of that "perfect" scoring opportunity. Brooklyn booted in the final goal five minutes later and won the game.

Beaver coach Harry Karlin marvels at Scarlett's spirit and seemingly unlimited supply of energy. "I don't see how the devil the man goes through an entire game without resting for a second. Nobody on the team goes up and gets the ball like he does, so it would be criminal to tell him to slow down."

One of the reasons for Scarlett's many head-on collisions is that defensemen converge on him if he holds the ball too long.

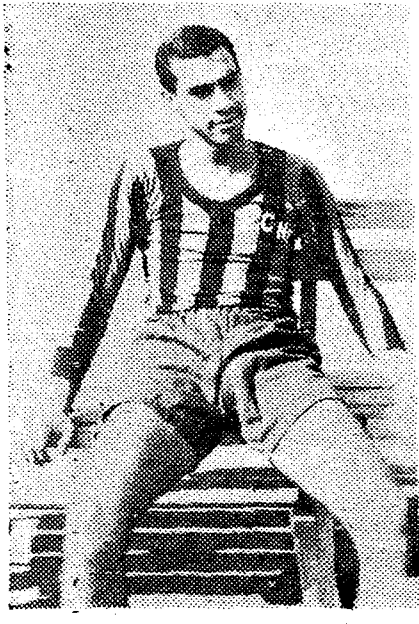
"We try to tell him to pass or shoot more often," says Karlin. "Then he wouldn't have to fight

the whole opposition."

But Earle maintains that the team hurries its passes too much. "I think we should remain calm, look for someone who's free and pass accurately at the right time," he says.

However, at one point in the game against Fort Schuyler last week, Earle evidently had not seen anyone free for a pass and attempted a singlehanded attack. He got past the Maritimer halfbacks, bounced off a fullback, waded through two more men and

(Continued on Page 7)



EARLE SCARLETT

way as he charges across the field.

And since it's Earle's policy not to slow up at any time, he often finds that he is involuntarily falling down on the job. "I can't help it," he says. "In a tight game I bear down. The fellows on the team tell me to let up

**BEAVER DEB SOCIETY**  
 A WOMAN'S TOUCH IS NEEDED FOR ROTC FUNCTIONS. ALL GIRLS INTERESTED IN JOINING A SOCIAL AND SERVICE ORGANIZATION...  
 Please attend open meeting in 348 Finley on Friday Oct. 13—7:30 P.M.



WHERE IS EVERYBODY?  
 they're at the  
**PI LAMBDA PHI**  
 Smoker, Oct. 13, 8:00 P.M.

- Swimming Pool
  - Lounge
  - Snack Bar
- at  
**Kenmore Hotel**  
 23rd STREET and LEXINGTON AVENUE

**Brooklyn Residents**  
**Phi Lambda Delta**  
**Semi-Annual Smoker**  
 FRIDAY, OCTOBER 13, 1961 at 8:00 P.M.  
 23 East 95th Street, Brooklyn 12, N. Y.

**SAVE MONEY**  
 WITH THESE LOW COLLEGE RATES

- PLAYBOY (1 yr reg \$6) ..... \$5
- PLAYBOY (2 yr reg \$11) ..... 9
- TIME (1 yr reg \$7) ..... 7
- TIME (2 yrs) ..... 7
- US News and WR (39 wks) ..... 3
- NEWSWEEK (1 yr reg \$6) ..... 3
- NEWSWEEK (34 weeks) ..... 3
- LIFE (1 yr reg \$5.95) ..... 4
- LIFE (2 yrs) ..... 7
- Sports Ill. (1 yr reg \$6.75) ..... 4
- SPORTS ILLUSTRATED (2 yrs) ..... 7
- Harpur's Monthly (1 yr reg \$6) ..... 3
- Saturday Review (1 yr reg \$7) ..... 3
- SATURDAY REVIEW (2 years) ..... 7
- NEW YORKER (8 mos reg \$5) ..... 3
- ATLANTIC MONTHLY (8 mos) ..... 3
- Archit Forum (1 yr reg \$6.50) ..... 3
- Christian Sci Mon (6 mos) ..... 5
- ESQUIRE (8 mos reg \$4) ..... 2
- Scientific American (1 yr) ..... 2
- Sat. Eve. Post (39 wks reg \$4.50) ..... 2
- LOOK (1 yr reg \$4) ..... 2
- MADMOISELLE (1 yr reg \$5) ..... 2
- Good Housekeeping (2 yrs reg \$6) ..... 3
- READER'S DIGEST (8 mos) ..... 2
- SCIENTIFIC AMERICAN (1 yr) ..... 2
- The Reporter (1 yr reg \$6) ..... 2
- New Republic (1 yr reg \$8) ..... 5
- THE NATION (1 yr reg \$8) ..... 5
- Manchester Guardian (1 yr AIR) ..... 8
- REALITIES (1 yr reg \$15) ..... 10
- GRAZIA (1 yr reg \$15) ..... 10
- NY TIMES (Sunday only 1 yr) ..... 25
- NY TIMES (Book Review 1 yr) ..... 25
- AMERICAN HOME (25 mos) ..... 10
- Amer Jour of Medicine (1 yr) ..... 10
- Amer Jour of Surgery (1 yr) ..... 13
- Art Direction (1 yr reg \$15) ..... 10
- Art News (1 yr reg \$11.50) ..... 6
- Arts & Archit (1 yr reg \$5) ..... 3
- Better Homes & Gardens (1 yr) ..... 3
- Car & Driver (1 yr reg \$5) ..... 3
- Changing Times (1 yr) ..... 6
- Downbeat (1 yr reg \$7) ..... 3
- Electronic World (1 yr reg \$5) ..... 3
- FLYING (1 yr reg \$5) ..... 3
- FORBES (1 yr reg \$7.50) ..... 5
- FORTUNE (1 yr reg \$10) ..... 5
- GLAMOUR (1 yr reg \$5) ..... 3
- Harpur's Bazaar (1 yr reg \$5) ..... 3
- Hi-Fidelity (15 mos reg \$7) ..... 3
- Hi-Fi Stereo Review (1 yr reg \$9) ..... 3
- HOLIDAY (15 mos reg \$7.50) ..... 3
- House Beautiful (2 yrs reg \$10) ..... 6
- HOUSE & GARDEN (1 yr reg \$6) ..... 3
- Living & Young Men (1 yr) ..... 2
- Modern Bride (1 yr reg \$3) ..... 2
- MCCALL'S (1 year) ..... 3
- Modern Photography (1 yr reg \$4) ..... 2
- Popular Boating (1 yr reg \$5) ..... 3
- Popular Electronics (1 yr reg \$4) ..... 3
- Popular Mech (20 mos reg \$3.00) ..... 2
- Popular Photography (1 yr reg \$5) ..... 3
- REDBOOK (1 yr) ..... 3
- ROAD & TRACK (1 yr reg \$5) ..... 4
- SCIENCE DIGEST (1 yr) ..... 2
- The Second Coming (15 issues) ..... 2
- SING OUT (1 yr reg \$3.60) ..... 2
- SKI MAGAZINE (2 yrs reg \$5) ..... 3
- SKIING NEWS (2 yrs reg \$5) ..... 3
- SUNSET (2 yrs reg \$5) ..... 3
- Theatre Arts (9 mos reg \$5.50) ..... 2
- Town & City (22 mos reg \$3.75) ..... 2
- TV Guide (44 wks reg 4.40) ..... 3
- VOGUE (1 yr 20 issues) ..... 3

ORDER NOW, publisher will bill you  
 STUDENT SUBSCRIPTION SERVICE  
 1743 N. Kenmore, Los Angeles 27, Calif.

Enclosed \$..... Send subscription  
 name.....  
 address.....  
 city..... zone..... state.....  
 college..... class of.....  
 renew  gift from.....