

THE CAMPUS

Undergraduate Newspaper of the City College Since 1907

VOL. 109—No. 19

WEDNESDAY, DECEMBER 13, 1961

401

Supported by Student Fees

CU to Ask \$6.3 Million In PhD Aid

The City University announced Monday that it will ask the state for \$6,300,000 to support an expanded graduate program.

The state funds would be used to strengthen existing Master's programs in liberal arts and sciences, and business and engineering, and to initiate the doctoral programs.

Dr. Mina Rees, the University's dean of graduate studies, made these announcements at a meeting of the Coordinating Committee of the Public Education Association. Dr. Rees said the initiation of PhD programs would depend entirely on state support.

The proposed doctoral programs are in biology, chemistry, economics, English, history, psychology, sociology, speech and theater, and educational psychology. The College last term recommended programs in business, technology, economics, psychology and clinical psychology.

Dean Rees said no decisions had been made on where each program would be offered. However, she said Brooklyn College was a likely choice for biology and chemistry, Hunter College for English, and the College for economics.

The question of where the history program will be based is the subject of a "battle," she said, because all four senior colleges in the university have good faculty members in that field.

Tuition fees for the program have tentatively been set at twenty (Continued on Page 5)

Library Hours

The Cohen Library will be open during the Christmas vacation only on the following days: December 22 from 9 in the morning to 10 at night, December 26 to 28 from 9 to 9, and December 29 from 9 to 5.

'Baloonatic'



Buster Keaton and the comedy team of Laurel and Hardy, pictured above, will star in this week's Board of Managers film program. Billed under the heading "Baloonatic," the program, which will include selected cartoons and shorts, will be shown today and tomorrow at 3 in 303 Cohen Library and at 8 in 217 Finley. Admission is free.

SG POLLS OPEN TODAY AT NOON; BREN'S FUNDS PROVOKE DISPUTE

By Vic Grossfeld

An estimated 2800 students will cast ballots in the Student Government elections which will begin today at noon and end Friday at 3. In the SG office yesterday, the candidates were putting the finishing touches on a two-week long campaign which, according to some observers, has been devoid of tangible issues.

Charges based on personal issues were slung back and forth with increasing fervor as election day drew near. It became increasingly easy to tell the players without a scorecard.

The major "issue" in the campaign appears to be the campaign

Endorsements

The Campus endorses the following candidates for Student Government:

● SG President: **LES FRAIDSTERN**

● SG Vice President: No endorsement

● SG Secretary: **ROBERT LEVINE**

● SG Treasurer: **IRA BLOOM**

● SFCSA: **LINDA LEDERMAN**

● Student Council:

Class of '62—

ED BEISER

Class of '62—

TED BROWN

Class of '64—

ROBERT ATKINS

MAJORY FIELDS

Class of '65—

ADELE SCHREIBSTEIN

● Class of '62 President:

PAUL BLAKE

Referenda: The Campus advises students to vote "yes" on referendum 1 and "no" on referenda 2, 3, 4 and 5.

Alumnus to Urge City Council Bar Traffic on Convent

By Libby Zimmerman

A motion to consider the closing of Convent Avenue to traffic, an issue that is periodically raised at the College, is expected to be introduced at the City Council next month by an alumnus of the College.

Bernard Manheimer '49, a councilman-elect from the Bronx, has a personal reason for introducing the motion. "I vividly recall a fatal accident to a wonderful girl on Convent Avenue in 1948," he said. The girl was Marion Weinberg, a junior. She was struck and killed by a speeding car.

The main problem in closing Convent Avenue is rerouting the buses which use it.

Mr. Manheimer said he hopes there will be a public hearing on the situation in the near future. He said he would "make sure that College students know about it" if one is held.

The drive to close the avenue has been adopted in the platforms of two major slates in this week's Student Government elections: the Reform slate and the Student Action Slate.

Mrs. Sobell

Mrs. Helen Sobell, wife of Morton Sobell, convicted ten years ago of conspiracy to commit espionage in the Rosenberg-Sobell spy cases, will speak on "The Case of Morton Sobell" tomorrow at 12:15 in 101 Downer. The speech is sponsored by the E. V. Debs Club.



FRED BREN

tactics and expenses of the various candidates. The chief item of controversy under this heading is the elaborate campaign which Presidential candidate Fred Bren '62 and his 23-man Reform slate have conducted.

Both Les Fraidstern '62, one of Bren's opponents for President, and Herb Berkowitz '63, an independent candidate for Vice President, have cited Bren's campaign buttons, "expensive" offset leaflets,



LES FRAIDSTERN

and "sound truck" as evidence that Bren is attempting "to buy the campaign."

Berkowitz said that he hoped "that Bren lost because I don't like to see an SG election bought."

Fraidstern estimated Bren's campaign expenditures at "over two hundred dollars." He pointed out that this was nearly four times his own expenses which he estimated at "somewhere around fifty dollars."

Bren denied the charge and said that his "entire slate of 24 candidates has not spent over one hun-

200 From Faculty Advertise In 'The Times' Against Ban



PROF. SAMUEL HENDEL

By Bob Rosenblatt

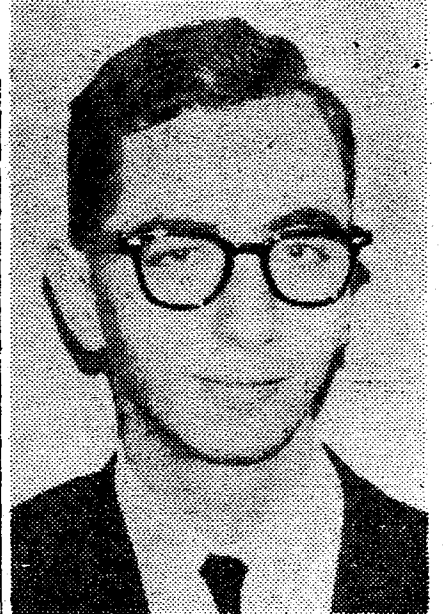
More than 200 faculty members of the College contributed \$1,080 to attack the Administrative Council's speaker ban in an advertisement in yesterday's *New York Times*. The advertisement, signed by 214 faculty members—including 43 full professors, consisted of a reprint of a *Times* editorial of



PROF. HENRY VILLARD

October 28 which called the ban "an exercise in sophistry." Among the signers were chairmen of twelve departments — including political science, history, economics, philosophy, English, and some science and engineering departments.

Prof. Samuel Hendel (Chmn. (Continued on Page 2)



LEN MACHTINGER

Interviews

Recorded interviews by student reporters with the three Presidential candidates will be played by the Beaver Broadcasting Club today from 11 to noon in Buntzenweiser Lounge. Excerpts of the interviews will be broadcast through Friday from 10 to 5.

dred dollars." He termed the charge an attempt by his opposition "to attack us personally," instead of "putting forth a positive platform as we have."

Len Machtinger, who is running for President on the Student Action Slate, has conducted the most moderate campaign of the three, with expenses estimated at eleven dollars.

Another "issue" is the candidates' reasons for running for office. Bren claims that he aims "to make SG for students and not for the clique" which he claims now controls it.

Both Fraidstern and Machtinger appear to be running on a "save (Continued on Page 2)

Ronan Bows Out In Prexy Search

Mr. Charles H. Tuttle, chairman of the Board of Higher Education committee that is searching for a new College President, last Friday confirmed reports that Dr. William J. Ronan had been considered for the post. Mr. Tuttle reported, however, that Dr. Ronan had asked that his name be withdrawn.

In a statement, Mr. Tuttle said that "the group had been greatly impressed by Dr. William J. Ronan's qualifications, record and character and was seriously considering him for recommendation to the Board . . ."

Earlier this month, BHE officials—including Mr. Tuttle—had declined to comment on reports that Dr. Ronan was being considered for the Presidency.

Speaker Ban

(Continued from Page 1)

(Political Science), one of thirteen organizers of the drive to collect money for the advertisement, said yesterday that the response was "tremendous."

Professor Hendel said the advertisement represented "the first time in 25 years that faculty members have banded together to make a public statement on an issue."

Lane Gets Student Support

A movement to start a Student Committee to elect Mark Lane to Congress has been started by Monroe Wasch '63.

The club will make a move to charter next term. It hopes to convince the reform movement that if Lane were nominated he would get an adequate number of campaign workers. Mark Lane is at present a State Assemblyman from Manhattan.

SG Election Starts Today

(Continued from Page 1)

SG from Fred Bren" program. Fraidstern states that he hopes the student body "will not be taken in by Bren . . . who doesn't have the decency to stick with whatever principles he may have."

In all, 106 students, the largest number in the recent history of SG, are running for elective positions. Booths set up outside Knittle Lounge on North Campus and opposite the Finley Center cootroom on South Campus will open at 12. However, much of the balloting is expected to be done when students are presented with ballots in their classrooms from 11 to noon.

In addition to the three candidates for the Presidency, there are three vice-presidential candidates—Berkowitz, Joel Forkosch '63 and Richie Schepard '63; two candidates for Secretary—Robert Levine '64 and Richard Weisberg '63; and an unopposed candidate for Treasurer—Ira Bloom '64.

There are also 53 students running for 24 Student Council posts—five seniors, ten juniors, 14 sophomores and 24 freshman.

The six page ballot also contains five referenda, the most controversial of which resolves that *Tech News* become an "official publication" at the College.

Two positions on the Student Faculty Committee on Student Activities will also probably be filled in the elections. Three students are running—Linda Graber '63, Linda Lederman '63 and Mike Wachtell '63.

The polls will stay open until 3 today, and from 10 to 3 tomorrow and Friday. The votes will be counted Friday afternoon by the SG Elections Agency and the results will be announced Friday evening at an SG dance being held in the Finley Center.

JOE GOES
A — PHI — O
National Service Fraternity

CONTACT LENS WEARERS!!

Have you encountered difficulty in obtaining contact lens insurance for loss, breakage or damage at reasonable rates? ? ?

Excellent coverage now available at sensible rates!

For information write to
Contact Lens Replacement
Box #2553
Grand Central Station
N. Y. 17, N. Y.

Counsellors
COLLEGE JUNIORS OR HIGHER

★
Large, well-established co-educational camp with a fine Jewish cultural program. 80 miles from New York City.

★
Good salaries
Pleasant working conditions
Mature staff associations

★
Write
CEJWIN CAMPS
31 Union Square West
New York 3, New York

SENIORS ONLY

Two Men will be Selected
For Special Training and Earnings
Prior to Graduation
in Personal and Business Insurance
Planning and Sales

Write to Mr. Michael Teichman, Stuyvesant Agency
PRUDENTIAL INSURANCE COMPANY,
200 East 42nd Street New York 17, New York



during the Christmas holidays, visit
**OUR UNIVERSITY SHOP
AND OUR "346" DEPARTMENT**

These two fine departments have everything for today's undergraduate... from new unfinished worsted suits to traditionally correct evening wear... all reflecting our distinctive styling, quality and taste. University sizes 35 to 42, "346" sizes 36 to 46.

University Suits, \$65 to \$80 • Topcoats, \$80
Skiwear, from \$11 • Outerwear, from \$30
"346" Suits, \$90 to \$105 • Topcoats, from \$95
Tweed Sport Jackets, \$65 to \$75
Button-down Oxford Shirts, \$5.75 and \$6.25

ESTABLISHED 1818
Brooks Brothers,
CLOTHING
Men's Furnishings, Hats & Shoes
346 MADISON AVENUE, COR. 44TH ST., NEW YORK 17, N. Y.
46 NEWBURY, COR. BERKELEY ST., BOSTON 16, MASS.
PITTSBURGH • CHICAGO • SAN FRANCISCO • LOS ANGELES

Check your opinions against L&M's Campus Opinion Poll '61

1 Will the U.N. grow stronger in the next 10 years?



Yes
 No

2 Which is most important to you in picking a date...



Looks Personality Intelligence

3 Do you buy cigarettes in soft pack or box?



Soft pack
 Box

Expect more, get more, from L&M

There's actually more rich-flavor leaf in L&M than even in some un-filtered cigarettes. You get more body in the blend, more flavor in the smoke, more taste through the filter. So expect more, get Lots More from L&M. And remember—with L&M's modern filter, only pure white touches your lips.



HERE'S HOW 1029 STUDENTS AT 100 COLLEGES VOTED!

Have an L&M in pack or box	
Box	31%
Soft pack	69%
Looks	19%
Personality	65%
Intelligence	16%
No	31%
Yes	69%

L&M's the filter cigarette for people who really like to smoke.

COLLEGE CLUB NOTES

All clubs meet tomorrow at 12:30 unless otherwise indicated.

AIEE-IRE
Meets in Harris auditorium at 12:10 to hear a representative from Bendix speaking on "Electron Tube Products."
American Meteorological Society
Holds a business meeting in 308 Shepard.
American Rocket Society
Meets in 108 Shepard at 12:15 to sell tickets for a field trip to Picatinny arsenal on December 28.
Architectural Society
Meets in 125 Shepard.
Baskerville Chemical Society
Presents Prof. Ernest Borek (Chemistry) speaking on "How a discovery is made" in Doremus Hall.
Biological Society
Presents Dr. William Tavolga (of the College and the Museum of Natural History) speaking on "Sound perception in Fish" in 306 Shepard.
Cercle Francais du Jour
Presents a conference par Mme Anders in 121 Finley.
Christian Association
Meets in room 348 Finley.
Club Iberoamericano
Presents a dancing party in 302 Downer.
CORE
Meets in 19 Shepard to discuss results of the restaurant survey.
Council of Religious Forums
Meets Wednesday at 4:00 in Hill House, 140 Street and Amsterdam Ave. to discuss "Is there a religious imperative to group social action?"

Der Deutsche Klub
Presents Eln Farbdiasvortrag von Armin Rhacida speaking on "Deutschland-Osterreide" in 305 Mott at 1:00.
Dramsoc
Meets in 428 Finley to discuss future productions. New members invited.
Folk Dance Society
Meets in 325 Finley for folk dancing and instruction.
FOM
Meets for the last time before the music festival at 12:00 in 230 Goldmark.
Freshman Class Council
Meets in 210 Klapper.
Government and Law Society
Presents Whitney North Seymour Jr. speaking on "Ten ways to hit your head against a wall" in 212 Wagner.
Hellenic Society
Presents Prof. Yohannan (English) speaking on Greek History in 111 Wagner. Slides will be shown, and all are welcome.
History Society
Presents Mr. S. Feingold (Poll. Sci.) speaking on "Was Lincoln a Liberal?" in 105 Wagner.
House Plan
Chats with Prof. Garrison (Chmn. Math) Wednesday from 2:30-4:00 in the House Plan Lounge (327 Finley). Coffee will be served, all are welcome. Holds a meeting on Thursday for all organizations which have adopted children for HEA Children's Christmas party at 12:00 in the House Plan Lounge.
Inter-Varsity Christian Fellowship
Meets in 345 Finley.
Italian Club
Holds a dance with the Spanish club open to all students in 440 Finley at 12:15.

Marxist Discussion Club
Discusses the "McCarran Act" in 305 Finley.
Mercury
Meets in 331 Finley to discuss future plans and arrange for selling of current issue.
Microcosm
Holds a staff meeting on Wednesday, December 13 at 4:00, in 217 Finley. All members are expected to attend.
Musical Comedy Society
Discusses production of "Guys and Dolls" in 350 Finley.
NAAACP
Presents Mr. Antonio Cardozo speaking on "Portugal's Multi-Racial policy" in 106 Harris.
Newman Club
Holds a general membership meeting at the Catholic Center 469 West 142 Street at 12:15. Friday, Barry Stigney speaks on "What is a Catholic Education?" at 3:00.
Outdoor Club
Meets in 303 Shepard at 12:00 to discuss possible winter outings.
Philo Club
Presents Dr. Schneider (Philo) speaking on "The Nature of the Evidence for E.S.P. and P.K." A discussion will follow.
Physics Society
Presents Mr. Lenny Susskind speaking on "Symmetry considerations in Physics" in 109 Shepard.
Pi Tau Sigma and ASME
Presents Prof. Edward G. Mack (English) speaking on "The plight of the intellectual in the Modern World" in 126 Shepard.
Psychology Society
Holds a Hospital Seminar in 210 Harris at 12:15. Students doing volunteer work at Manhattan State Mental Hospital will speak.
Railroad Club
Meets in 208 Harris to hear Jon Kaplan talk on railroad photography and to meet Dr. Kelvin.
SANE
Presents a panel discussing "Should we have a Civil Defense Program?" in 106 Wagner.
Ski Club
Meets to discuss next trip and to enroll new members in 306 Finley.
Sociology-Anthropology Society
Presents Professors Barron, O'Neill and Howton, who will conduct a seminar on "Graduate Opportunities Throughout the U.S." in 224 Wagner.
Society of Orthodox Jewish Scientists
Tutors students in basic math, physics, chemistry, etc. in 205 Harris.
Student Peace Union
Holds an important meeting to complete elections and organize "Action and Activities" in 9 Klapper at 12:15.

A REVIEW

'Epitaph'

By Ralph Blumenthal

With last week's Dramsoc production of "Epitaph for George Dillon" the Osborne-Creighton play was virtually laid to rest.

The difficulty arose from the great demands "Epitaph" makes on the actors. In the words of George Dillon, "they don't merely look and talk like caricatures; they are caricatures." In addition, the play depends upon a sustained high tension in the relationships between the characters.

Where the cast of nine succeeded, it was largely in the area of caricature. Where they failed, it was through lack of communication, each moving in a vacuum and developing his stereotype at the expense of the action.

The play's title refers to the death of what George regards as his literary powers. As a penniless angry young man, George is invited to live with the Elliots, a very middle-class English family, because he reminds Mrs. Elliot of her son, killed in the war. From the beginning, George is immediately at home and helps himself to everything from his hostess' cigarettes to her arse-twitching daughter, Josie. His villifications of their petty, materialistic values and his simultaneous lust for these same values constitutes the play's ironic message.

Josie, the directionless, sensual, middle-class, adolescent, is the incarnation of these values. George describes her as living "beneath a brooding mass of cosmetics." Renee Grubman, '64, although physically well-equipped for the role, never convincingly sounded as dumb as she looked. For a slut's spontaneity and nonchalance, Miss Grubman substituted a forced vigor. As a caricature, however, she made the point, although with as much subtlety "as a game of bingo," to borrow another phrase from George.

As her lover, George Dillon, Robert Fried '63 maintained a very successful sneer throughout the performance. With his exuberant movements and his professional sense of timing, he remains the only actor that approached a dramatic contact with his associates.

On the other hand, Sally Rose Stern '62 as the befuddled Mrs. Elliot, provided the most consistently successful caricature. One of her opening lines, "I'm in such a muddle I don't know where I am," so continually characterized her role as an naively unconscious soul, that the audience tended to overlook her fine performance.

Susan Elrach '63, as Josie's aunt Ruth, played her thankless role steadily, although at times she ironically merited George's criticism of her as one who "still sounds a little feeble, like 'shift me, I'm burning'."

All the minor actors may be said to be guilty, although in varying degrees, of acting in a vacuum. To the credit of Veeps Pomex '65 who played Norah, Josie's mouse sister, it must be said that she lived up to George's analysis of her as a "hole in the air." The stage movements and poses of Ted Warmbrand '63 as the misanthropic Mr. Elliot were quite convincing. However, what might have been an impeccable performance was marred by a lack of weightiness in his voice.

Charles Korn's '65 role as the obnoxious Geoffrey Colwyn-Stewart deserved a bit more vigorous pedantry than he provided. Both Mark Walters '62, as the Babbit-like government employee, and Mark Polyocan '62, as the flamboyant Barney Evas, performed successfully although their shortcoming was, like the rest, their failure to rise beyond their stereotype and communicate.

NEWS IN BRIEF

ID Cards Returned

Dean James S. Peace (Student Life) said yesterday he has returned the ID cards that were taken from three students who participated in a protest last Friday against ROTC members who were obstructing Finley Center during a reception for Mrs. Eleanor Roosevelt.

Dean Peace said the three students, who were carrying signs reading "Students si, ROTC no," would be granted a hearing in his office today.

Kohn to be Honored

The Evening Session history society has announced it will sponsor a musical program Monday at 6 in Aronow Auditorium in honor of Prof. Hans Kohn (History), who is retiring after this term.

International Folk Dance

The Folk Dance Society will hold its third evening of international folk dancing, Saturday, December 16 in 428 Finley at 8:30 P.M.

Panel to Discuss CD

The College's Society for a Sane Nuclear Policy will present a panel discussion on "Should We Have a Civil Defense Program?" in 106 Wagner tomorrow at 12. Speakers will include Assemblyman Mark Lane (Dem.), Prof. Harry Lustig (Physics), Mr. Thomas McNeil, president of a company which manufactures fall-out shelters, and Prof. Harry Soodak (Physics).

Winter Concert

The Music Department will present the Winter performance of its semi-annual concert program Saturday at 8:30 and Sunday at 4:30 in Aronow Auditorium.

The College's Chorus and Orchestra, under the direction of Prof. Fritz Jahoda will perform works of Beethoven, Bach, Mozart, Sessions and an original piece by Prof. Mark Brunswick.

Admission is \$1.25 and tickets will be sold at the door.

AN APPEAL FROM A CANDIDATE

Abe Lincoln once said "you can't be honest and be a politician."

I do not claim to be a politician, but a man trying to do a job. I realize that a well informed public votes best, so I am taking this opportunity to introduce myself to you, the freshman class.

My name is Lawrence Reznick and I am running for Student Council '65. My platform is simple, I am asking you the freshman class to write in and tell me what you want from Student Government; your letters can reach me if they are delivered, on North Campus, to room 023 Harris c/o the Military History Society; on South Campus, to room 152 Finley c/o the Military History Society; or room 412 Finley.

I am conducting this poll for the benefit of the students, to give them a more active voice in Student Government than electing a few representatives with preconceived ideas of how to run SG. I believe that the student should have more active voice in HIS government. I believe that SG should be, to paraphrase Mr. Lincoln, "a government of the student, by the student, for the student."

Thank You,

Lawrence Reznick

SIG FLIGS



"What'll it be, Miss Porter...
the Dokes or us?"



21 GREAT TOBACCOS MAKE 20 WONDERFUL SMOKES!
AGED MILD BLENDED MILD - NOT FILTERED MILD - THEY SATISFY

THE CAMPUS

BOB JACOBSON '62
Editor-in-Chief

Elect Fraidstern

Student Government is on its way up; it has a semester's record of responsible performance, new power over publicity regulations, and a new constitution to present to the General Faculty. To our mind, the main problem next semester will be to keep SG on the upward trail. Therefore our choice for President is clear. We wholeheartedly endorse Les Fraidstern.

Fraidstern is sincere and hard-working, and he has a comprehensive grasp of the issues and problems involved in the new SG constitution. More important, he has consistently demonstrated that his approach to controversy is thoughtful deliberation rather than immediate—and superficial—decision-making. The glib phrases of Leonard Machtinger and the spurious and opportunistic promises of Fred Bren are poor substitutes for the serious examination of issues and adherence to principle that Les Fraidstern offers.

Machtinger and Bren could at best keep SG at its present level; we think it more likely that they would lead it backward. Bren, in particular, has shown his willingness to promise anything to everybody, even to the extent of suggesting to engineers that he, as SG President, could influence fee allocations to their organizations. We suggest that Bren was in a much better position to do this when he was SG Treasurer.

Fraidstern brings a rare quality of leadership to the Presidency: a quiet insistence on thought before action. This is the type of leadership that will bring Student Government a new constitution—the first step toward a representative student governing body. Fraidstern surpasses his opponents in all departments except demagoguery and opportunism; he is our unqualified choice for SG president.

Veep is a Question

The Vice President is the second highest officer in Student Government. This may seem too obvious to mention, but from the looks of the three persons running for the position, it sadly needs to be pointed out. As the person second in command, the Vice President must be experienced in the workings of SG and capable of dealing with an coordinating the various activities of clubs and organizations at the College. In addition, he must have the maturity and diplomacy necessary for service on the SG Executive Committee. Each of the three candidates this term falls far short of these requirements.

Herb Berkowitz '63 has had the necessary experience for the post. However, in the past he has often demonstrated that he lacks the maturity that the job demands. Only recently has Berkowitz begun to outgrow his antiquated views on the jurisdiction of SC.

Joel Forkosch '62 is the least experienced of the three candidates. It is absurd to think that one who has served on Council for less than a term can be qualified to the post. In addition, his pro-tuition stand is, we feel, an insult to his fellow students. Similarly, in his voting on the ban in Council he has consistently attempted to obstruct any direct student action against it.

Richie Schepard is also greatly lacking in many of the qualities which a Vice President must have. Since having served a term on Council a year ago, Schepard has been unassociated with SG. He has not demonstrated a sufficient knowledge or ability to warrant consideration for the post he seeks.

1 'Yes,' 4 'Noes'

THE CAMPUS advises students to vote "yes" on referendum 1, which would establish the proposed Student Government constitution approved by Student Council last month. We suggest that the remaining four referenda merit "no" votes. The students must go on the record as opposing tuition at the City University on all levels, and as opposing the speaker ban. Referendum 5 would declare *Tech News* to be an official publication; we think it is too ambiguously worded to have real meaning.

For SFCSA

Although two positions for the Student Faculty Committee on Student Activities are open, we can only endorse Linda Lederman. As SG Secretary under Al Linden last fall, she was his gal Friday as he sought to reestablish the effectiveness of SG. Miss Lederman is informed and experienced, and well-qualified to serve on SFCSA until its functions are taken over, we hope, by the students.

The experience and knowledge of the other candidates is inferior to Miss Lederman's. Mike Wachtell '63, by his own admission, has kept himself aloof from student politics and Linda Graber '63 is tragically ignorant of the mechanics of government here.

For Sec'y, Treas.

THE CAMPUS endorses Robert Levine for SG Secretary and Ira Bloom for SG Treasurer. Of the two people running for Secretary, Levine presents twice as much experience and an almost overwhelming desire to work. Levine proved himself an able and effective worker for SG even during the months before he was elected to fill an SG vacancy for the Class of '64. He has been the chairman of the Public Opinion Research Bureau for two terms, and chairman, also for two terms, of the Publicity Committee. He has been an active member of Internal Affairs Committee, Student Committee on Hamilton Grange, and the Publicity Regulations Agency, among many others. Richie Weisberg, Levine's opponent for the post, presents a much less impressive record.

There is only one candidate running for Treasurer. Fortunately, Ira Bloom is worthy of the post. Bloom, only an upper sophomore, has already exhibited excellent leadership potential. In his capacity as SG Secretary and as a member of the SG Executive Committee he has put in long hours of work. He has an excellent knowledge of the important issues which will be plaguing SG next term. He will bring both experience and drive to the post.

For Student Council

Of the 53 candidates for Student Council positions, we have found only the following six sufficiently informed, capable and experienced to serve: Ed Beiser '62, Ted Brown '63, Robert Atkins '64, Marjory Fields '64 and Adele Schreiberstein '65. We endorse these six without reservation.

It is to Les Fraidstern's credit, as leader of the Constructive Action Party, that as a whole his running mates offer the students the best leadership of all the competing parties. All of our selections for Council, with the exception of Atkins, are members of the CAP. It is indeed unfortunate that so many students think they deserve to run for Council without even a basic knowledge of the issues at hand.

Each of the six mentioned above, however, has proved through participation on Council in the past that he is very much aware of the task SG must perform and that he is sincere in carrying out his responsibilities as a representative of the students. Each, we are certain, would continue to work hard and serve conscientiously.

Blake for Sr. Pres.

We urge all seniors to elect Paul Blake President of the Class of '62. One of the most industrious student leaders we know, Blake has demonstrated for many terms his ability to do a job quickly and efficiently. As chairman of the Board of Managers this term he has brought the students many excellent programs. As President of his class last year, he was a hard-working and devoted leader who gained the respect and support of many. It would be in the best interests of the Senior Class if Blake were elected to serve them again.



By Vic Grossfeld

You sit down at the typewriter all set to tell the students—to write an invective against one man. And then you think for a few minutes . . . and you feel that what you are about to do is rotten. You can't make a personal attack on one man without giving him a chance to answer—it's unfair.

Nevertheless, you feel that you have to tell the students . . . you have to tell them that the future of Student Government is at stake . . . you have to convince them not to vote for Fred Bren. So you think a while longer . . . it has got to be fair or else you're no better than he is.

You start to list your own reasons for writing this column—and then it hits you: just tell them why you're not voting for Bren . . . tell the facts. For if the weight of factual evidence is so strong as to make you want to write an invective, then it is surely strong enough to convince your fellow students.

So you start by telling them how a Presidential candidate must spend the term by demonstrating that he could be a capable President. He must do this by being one of the leading and most respected executives of SG. You tell them how he must learn all he can about SG so that if he is elected he can become a good leader. In short, you tell them that he must earn the right to run.

Then you tell them about Bren's activities this past term. You tell them how his only position of any note was on SFCSA—not SG. You tell them that he even lost in his bid to fill a vacancy for Treasurer of his Class Council—a far cry from SG President. And then, reluctantly, you tell them about what else Bren has done this term. You tell them how from the beginning of the term he has bartered and bargained, compromised and conciliated with only one thing in mind — to win. You also point out that he has, by making hollow promises, gained the support of those who should be his opposition. You read these last lines over and you feel that there should be some sort of proof. So you decide to tell them about Fred Bren and the engineers.

The story is quite simple. When the engineering slate was first formed, Bren, seeing a heretofore untapped source of support, quickly aligned himself with it. And since the Tech slate's major complaint was that Tech organizations had been discriminated against in the allocation of student fees, Bren quickly promised riches in the event of his election. But where was Bren when these unfair allocations were made? Why he was SG Treasurer — the student most responsible for fee allocations.

Then, amazed at the weight of evidence against him in this term alone, you decide to go back to last term . . . to when he was SG Treasurer and failed to get the allocations finished by the end of the term, forcing many organizations to cancel or postpone their programs — among them a tech organization (AIEE-IRE), which had to cancel two field trips because of this. And you allude to his Editorship on *Microcosm* when he was removed for incompetency followed by a storm of controversy.

And then you look back over what you've written and decide that you've cited the facts sufficiently . . . the overall picture is crystal clear. You feel that now at least some students know the truth about Bren and know at least why you are not voting for him.

You feel like ending with an impassioned plea urging all rational students not to vote for him but you decide that the facts have spoken for themselves . . . what more could an impassioned plea add?

Student Rally to Draft

MARK LANE

for CONGRESS

Friday, December 15th

at P.S. 41 — 116 W. 11th St.

Sponsored by the Student Committee
to Elect MARK LANE

8 P.M.

8 P.M.

Letters

NO TECH SPLIT

To the Editor:
Your editorial of December 1, which dealt with the recent manifestation of awareness on the part of technology students, was headed "Technological Split." This title, and the editorial itself, are both indicative of the misunderstanding and, indeed, resentment which has greeted our desire for a fair representation in Student Government. We do not want a "split!" We do not wish to secede from Student Government. We do want to participate in the affairs of Student Government, to make known our views on College issues and, as appears necessary, to stand up for the rights and privileges of technology students.

In your editorial you state: "But is . . . quite another [thing] to propose, in effect, that the clubs here be divided into two geographical categories." Is not the College itself divided into "two geographical categories?" Are not the bulk of a technology student's classes "up north," and the bulk of a liberal arts major's classes "down south?" Is it not true that the technology student finds it difficult, if not impossible, to obtain space in Finley Center, or to use many of the existing facilities there? Is it unreasonable for the technology student to ask for facilities, lounges, and office space which are readily accessible to him?

We do not wish, as you seem to feel, to alienate ourselves from the student center, nor do we wish to prevent south campus students from using the facilities which we hope to obtain "up north." We hope for, and sincerely desire, an intermingling of activities, so that a south campus student may enjoy an activity on north campus, and a north campus student may enjoy an activity on south campus.

Another major issue, which you completely disregarded, is the issue of fee allocations. We feel that a technology organization, with more than 300 members, should have been granted more money than a liberal arts group which has 15 members. The technology organization referred to is the AIEE-E, which received a grant equal to that awarded to the Marxist Discussion Group. Is this fair??

All we ask for is some representation in Student Government, that the technology students receive the rights and privileges to which they are entitled. Are we asking for too much???

John T. Benton
Sol Gems
Sydney J. Goldlust

College Budget Bid Tops City U. List

It will cost more to run the college next year than any other institution of the City University.

The College's requested operating budget of \$14,851,000 for 1962-63 is the highest out of the \$50,664,000 requested of the city by the University. The proposed budget for the College provides for the undergraduate and masters' programs in effect, and is a rise of almost twelve per cent over last year's.

The University's temporary budget was reviewed by the finance committee of the Board of Higher Education last month and is expected to be approved by the BHE this month. It will then be included in Mayor Wagner's Executive Budget which is submitted to the Board of Estimate next April.

CU Seeks \$6,300,000 in Aid

(Continued from Page 1)

dollars per credit. This would not be more than half the charge at other institutions in the city, Dr. Rees noted. At its next meeting, the Board of Higher Education will be asked to increase fees for the Master's degree courses from fifteen to twenty dollars per credit, she said.

The University's request for state aid and for a future formula which is "comparable" to the formula for graduate programs at the State University have been submitted to Mayor Wagner. Dean Rees said the Mayor will file a bill with the State Legislature "within a week."

The total budget proposed for both doctoral and Master's programs is \$11,000,000. With state aid at \$6,300,000, the remainder is expected to come from city and federal sources, Dr. Rees said. However, no discussions with city officials have been held, and the university does not expect the city to substantially increase its aid, she added.

If the University gets the \$11,000,000, it will admit 250 candidates for the doctorate next fall,

and increase liberal arts and science enrollment in its Master's programs from 900 to 2,000.

The question of PhD programs in technology and business, which had been a sore point for College alumni groups, seems to have been partially solved. A committee of engineers from other schools has completed a report on the School of Technology, and pronounced it ready to go ahead with doctorate work, Dr. Rees said.

The alumni groups had complained that representatives from the Schools of Technology and Business were being excluded from the deliberations of the University's Graduate Council, and that plans in these fields had been dropped. Because the deadline for submission of programs to the Legislature has already passed, it is unlikely that business and engineering programs could be offered before September, 1963.

The City University was established by the Legislature last May, but no funds were appropriated for doctoral programs. On October 27, the State Board of Regents gave the University authority to

grant the PhD.

Individual doctoral programs have been under study by academic departments since last winter. The programs proposed by the colleges were scrutinized by city-wide committees this semester.

The nine programs finally planned by the University must be submitted to the Regents for approval. However, Dr. Rees has been conferring informally with the Board of Regents for the past two months. Their approval is "a mere formality," she said Monday.

Hillel Presents Song Recital

A song recital by Irene Ross, star of light opera, will be presented tomorrow at 12 in the Finley Ballroom. The program is sponsored by Hillel and will include a performance by the Hillel dance group.

Who's John Galt? Does he endanger free tuition. Elect WEITZMAN to Council '65 who will launch an investigation into the identity of John Galt.

Debaters Place 5th

The College's affirmative debating team finished fifth out of thirty-five schools at a tournament held the University of Rochester last weekend.

Bob Marcus '63 Mitch Zimmerman '63 Alan Orenstein '62 and Joan Lorber '62 debated the affirmative side of this year's national topic: "Should Labor Unions Be Subject to the Antitrust Laws?"

The College's negative team, composed of Len Machtinger '62 and Sheldon Dorfman '62 debated the negative side of the question at Rensselaer Institute. They were the only negative team from 17 participating colleges to finish undefeated.

SIS BRIGGS '64

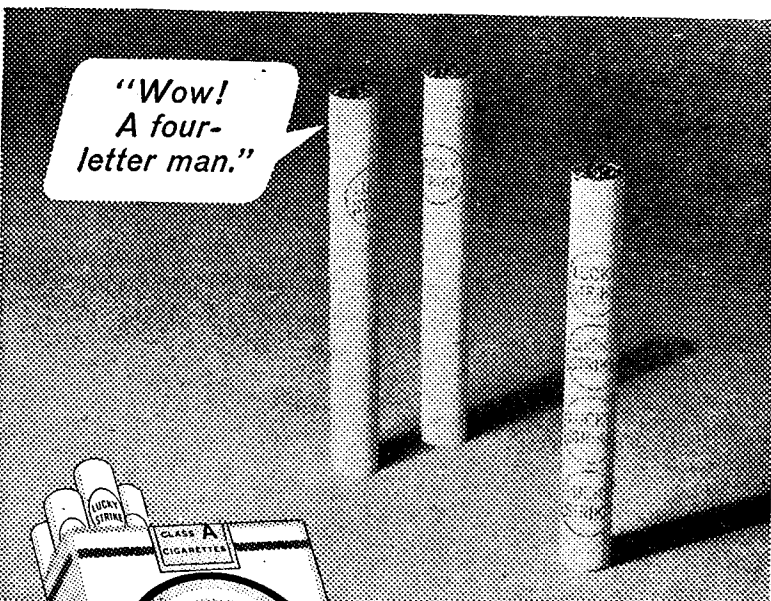
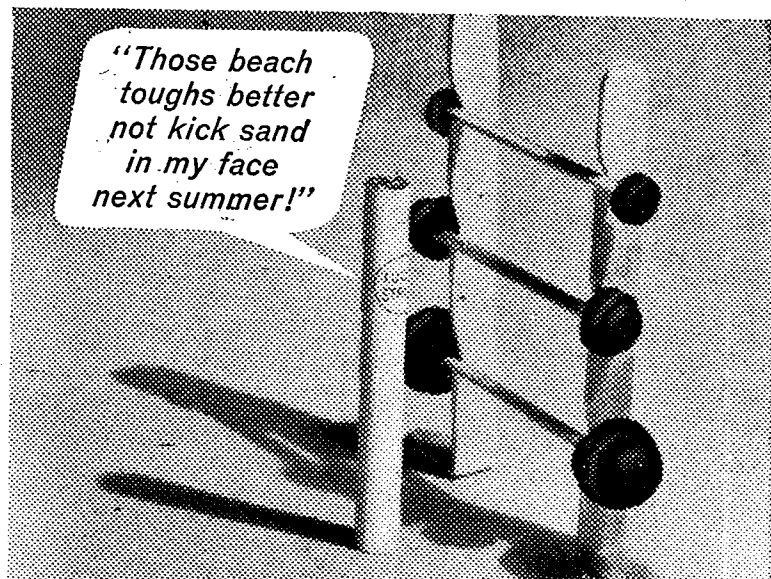
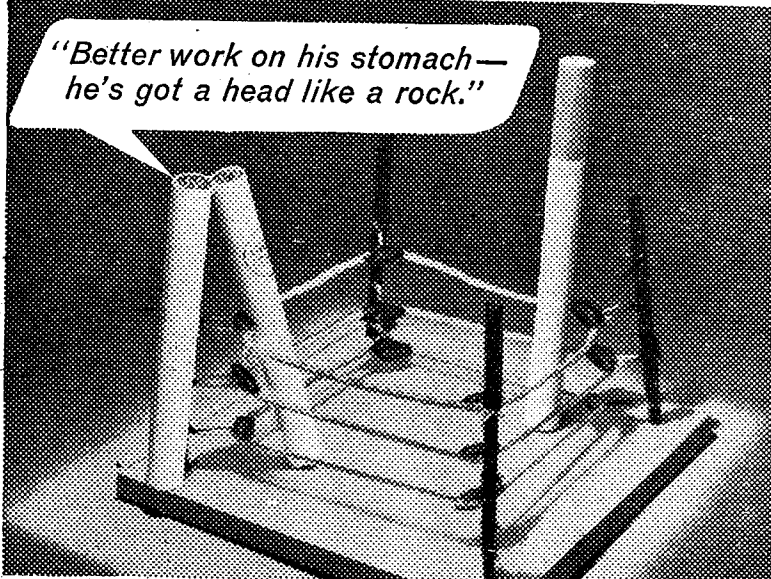
congratulates

TERRY and RONNIE
On Their Marriage

and

BARBARA and BOB;
JOAN and JIMMY
On Their Engagements

LUCKY STRIKE presents: LUCKY TUFFERS "WINTER SPORTS"



WHEN DOES A LUCKY TASTE BETTER THAN A LUCKY? There's a dangerous question because, as you well know, college students are crazy about Luckies and smoke more of them than any other regular. Still, there is one kind of Lucky that tastes a little bit better than any other kind. These extra-special Luckies are the ones you get for Christmas. The only thing better than a Lucky is a free Lucky. Ask for a carton this Christmas.

CHANGE TO LUCKIES and get some taste for a change!

Product of The American Tobacco Company — "Tobacco is our middle name"

Pre-Christmas Party for Fair Players
Saturday, December 16—8:30 P.M.
51 West 16 Street—Apt. 11A
Dancing . . . Refreshments . . .
Entertainment
Discussion by Observers at
Cuban Artists & Writers Congress
Contributions: 99 cents
Auspices for Fair Play for
Cuba Committee

SOVIET STUDENTS IN REVOLT
The Back to Lenin movement
Eytushenko and the writers' revolt
A forum at 10 EAST 23 ST., 4th floor
Speaker: Martha Curti, Ed. Bd.,
Young Socialist
SAT., DEC. 16 8:30 P.M. Contrib. 50c
Young Socialist Alliance GR 5-9441

**Eisenhower Backed Nixon —
And he lost
Eisenhower Backed Lefkowitz —
And he lost
Eisenhower Does NOT Back
NEIL DUMAS for SENIOR
CLASS PRESIDENT**

**VOTE FOR
ROCCO De STEFANO**

for
**President of Class of '65
AND SUPPORT**

- REPEAL ON THE BAN
- FREE TUITION
- FRESHMAN NEWSPAPER
- THE NEW S.G. CONSTITUTION
- BETTER GOVERNMENT



**Grossinger's
2nd Annual
College Jazz Weekend
Fri.-Sun., Dec. 15-17**
Special College Rate **\$35** for the entire weekend

Besides the intercollegiate jazz championship, you'll enjoy six lavish meals; Dawn to Yawn entertainment; jazz jam sessions; a mid-night swim party; Broadway shows; gala ice show; dancing to Latin, American, and Jazz tempos; tobagganing; ice skating, skiing.

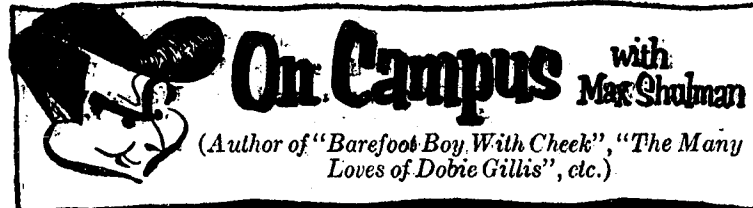
Grossinger's
Has Everything
GROSSINGER, N.Y.
N. Y. OFF. 221 W. 57TH • CI 7-4915
Direct Line—LONGACRE 5-3071

I wholeheartedly endorse FRED BREN's candidacy for Student Government President.

Of all the candidates, he alone has the capability, understanding and experience necessary to make Student Government meaningful for the individual student. Campus groups can look forward to an absence of bureaucracy under FRED BREN's leadership: Student Government will exist to serve rather than hinder campus organizations.

I urge you all to support FRED BREN in tomorrow's Student Government Elections.

JACK FOX
Student Government
Vice-President



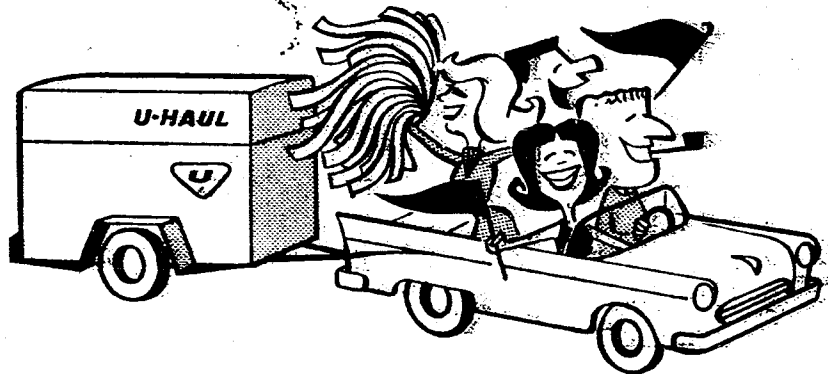
FROM SEA TO SHINING SEA

America is a great country. America's cities are full of houses. America's forests are full of trees. America's rivers are full of water. But it is not houses and trees and water that make America great; it is curiosity—the constant quest to find answers—the endless, restless "Why?" "Why?" "Why?"

Therefore, when I was told that Marlboro was a top seller at colleges from USC to Yale, I was not content merely to accept this gratifying fact, I had to find out why.

I hid myself to campuses in every sector of this mighty land. First, I went to the Ivy League—dressed, of course, in an appropriate costume: a skull-and-bones in one hand, a triangle in the other, a mask-and-wig on my head, a hasty pudding in my chops. "Sir," I cried, seizing an Ivy Leaguer by the lapels, which is no mean task considering the narrowness of Ivy League lapels, but, I, fortunately, happen to have little tiny hands; in fact, I spent the last war working in a small arms plant where, I am proud to say, I was awarded a Navy "E" for excellence and won many friends—"Sir," I cried, seizing an Ivy Leaguer by the lapels, "how come Marlboro is your favorite filter cigarette?"

**DRIVING TO FLORIDA
OVER THE HOLIDAYS?**
or to Alabama, Arizona, Arkansas, Georgia?



We'll pay you up to \$30.00!

All you have to do is tow an empty U-Haul Trailer on your return trip North. You will be paid immediately when the trailer is turned in. There are no strings attached and nothing to send in. Payment schedule is as follows:

1. Closed type trailers (7' long & under) \$16.00
2. Closed type trailers (8' to 10' long) \$24.00
3. Closed type trailers (4 wheel, 12' long) \$30.00

Phone the U-Haul Co. offices in: Miami ME 5-1026, Tampa 872-0884, Orlando CH 1-9555, W. Palm Beach 965-0558, Atlanta, Ga. 378-4546 or present this ad to any U-Haul Dealer in the states listed above. You'll find U-Haul Dealers listed in the yellow pages of the telephone book under "TRAILERS - RENTAL."

Attention U-Haul Dealers in Florida, Alabama, Arizona, Arkansas, Georgia:

The bearer of this ad is authorized by the U-Haul Co. Traffic Dept. to pick up any van model trailer not reserved with a cash deposit.

Instructions For Hook-Up Dealer:

1. Fill out a One-Way Rental Contract. Leave the rental charges column blank.
2. Write the words "Haul-Away" across the face of the contract and give the "Pink" and "Yellow" copies to the driver. He is to keep this Haul-Away ad and turn it in to the Receiving Dealer.
3. Your Rental Company will pay you \$1.00 for making this hook-up.

4. Fill in:
Trailer # _____
Your Code # _____
City _____
State _____

5. Ask the driver what city he came from. Dispatch the trailer to an AAA Dealer in that city.

Driver Is To Turn Trailer In At:
Name _____
Code No. _____
Address _____
City _____
State _____

Instructions For Receiving Dealer:

Check the payment schedule above and pay driver accordingly. Deduct the amount paid out from your next Monday Report. Send this ad and the yellow contract copy with your report as proof of payment.

Complete the Following Information:

Amt. Paid Driver _____
Dealer's Signature _____
Driver's Signature _____
Dealer's Code No. _____

**This offer expires
January 15, 1962**



"I'm glad you asked that question, Shorty," he replied. "Marlboro is my favorite filter cigarette because it is the filter cigarette with the unfiltered taste."

"Oh, thank you, sir!" I cried and ran posthaste to several campuses in the Big Ten, wearing, of course, the appropriate costume: a plaid Mackinaw, birling boots, a Kodiak bear and frost-bitten ears.

Spying an apple-cheeked young coed, I tugged my forelock and said, "Excuse me, miss, but how come Marlboro is your favorite filter cigarette?"

"I'm glad you asked that question, Shorty," she replied. "Marlboro is my favorite filter cigarette because the flavor is flavorful, the flip-top box flips and the soft-pack is soft."

"Oh, thank you, apple-cheeked young coed," I cried and bobbed a curtsy and sped as fast as my little fat legs would carry me to several campuses in the Southwest, wearing, of course, the appropriate costume: chaps, canteen, and several oil leases. Spying a group of undergraduates singing "Strawberry Roan," I removed my hat and said, "Excuse me, friends, but why is Marlboro your favorite filter cigarette?"

"We are glad you asked that question, Shorty," they replied. "Marlboro is our favorite filter cigarette because we, native sons and daughters of the wide open spaces, want a cigarette that is frank and forthright and honest. We want, in short, Marlboro."

"Oh, thank you, all," I cried and, donning a muu muu, I set sail for Hawaii, because in Hawaii, as in every state where Old Glory flies, Marlboro is the leading seller in flip-top box. On campus, off campus, in all fifty states, wherever people smoke for pleasure in this great land of ours, you will find Marlboro.

© 1961 Max Shulman

And you will also find another winner from the makers of Marlboro—the King-size, unfiltered Philip Morris Commander, made by a new process to bring you new mildness. Have a Commander. Welcome aboard!

Dreidl Title Won By Hart

Hart's Clutch 20-Sec. Spin Sets Mark

By Vic Grossfeld
 Before a near-record crowd assembled in the Hillel Arena last Thursday, Prof. Hiram Hart (Physics) (Spinner) Hart (Physics) came through with one of the great clutch performances of the time to win the College's annual Dreidl-Spinning Championship.

With the score tied at 3-3 in the best-of-seven final round, Professor Hart unleashed a mighty twenty-second spin to win the championship for the second consecutive year and set a new official College dreidl-spinning record. A former champion, Prof. Bernard Brown, (Physics) was runnerup. His final spin of 19.9 seconds also broke the old record.

Last year, Professor Brown won the dreidl crown with an unbeatable spin of 25.1 seconds, but the record was disallowed by the International Dreidl-Spinners Record Committee.

Unfortunately, Professor Brown's heart-stopping victory was shrouded by a cloud of controversy. It



RABBI ARTHUR ZUCKERMAN

Rivlin Loses Out In Early Round

"I'll enter again next year, because the other two (Professors Hart and Brown) can't be as good as they were this year."

Speculating on his chances in next year's tournament, Dr. Rivlin said, "I'm so bad I can only improve. This year I couldn't even keep the thing [the dreidl] on the table."

Dreidl experts present at the meet felt that both the winner and the runnerup had outclassed the field by using a new innovation.

He was charged that he utilized unethical and illegal tactics.

Prof. Leo Hamalian (English), who was eliminated in one of the preliminary rounds, claimed that both the champion and the runnerup had "greased" their dreidls.

Officials of the National Dreidl-Spinners Association investigated the charge and concluded that Professor Hamalian was "a sore loser."

A guest competitor in this year's competition was the College's Acting President Harry N. Rivlin who was eliminated in an early round.

Accepting his defeat with grace, Dr. Rivlin resolved that he would

For days preceding the meet, they subjected the dreidls to exhaustive tests in the College's laboratories — they weighed them, measured them, examined them under high-power microscopes and tested them under wind tunnel conditions.

Dreidl spinning originated in the desert. In its infancy it was a form of gambling, but over the years it eventually evolved into the spectator sport that it is today.

Rabbi Arthur J. Zuckerman said that dreidl spinning "obviously develops an unusual sensitivity not only in the tips of the fingers, but in other parts of the body as well."

The City College of New York
 THE DEPARTMENT OF MUSIC and
 THE JOHN H. FINLEY STUDENT CENTER

WINTER CONCERT — 1961

JEROME K. ARONOW CONCERT HALL, GOLDMARK WING
 133rd Street and Convent Avenue

SATURDAY, DECEMBER 16th, at 8:30 p.m.
 SUNDAY, DECEMBER 17th, at 4:30 p.m.

"CONSECRATION OF THE HOUSE" OVERTURE, Opus 124 Beethoven
 KYRIE in D Minor, K. 341, for Chorus and Orchestra Mozart
 "HYMN TO VENUS" for Chorus and Orchestra Mark Brunswick
 (First Performance)

INTERMISSION

Orchestral Suite from "THE BLACK MASKERS" Roger Sessions
 "NUN IST DAS HEIL," Cantata No. 50 J. S. Bach
 THE CITY COLLEGE ORCHESTRA AND CHORUS
 Fritz Jahoda, Conductor

Admission \$1.25

Tickets: Room 152 Finley

A FREE EVENING OF FUN

FOR COLLEGE COEDS • SORORITIES
 LOCAL AND OUT-OF-TOWN COLLEGE STUDENTS

SWIM In Our Indoor Tropical Heated Swimming Pool	PLAY Ping Pong, Basketball, Handball, Billiards Shuffle Board	DANCE to Dinney's Cha Cha Orchestra
--	---	---

EVERY FRIDAY NIGHT AT 8:30 P.M.

at the

MID MANHATTAN CLUB

New York's Largest Jewish Private Club for College Students
 230A W. 74th STREET, NEW YORK CITY (off B'way)

— FREE ADMISSION FOR 1 GIRL ONLY —
 with this advertisement — Others, \$2.50 each.

For Any Other Details Call Joan Greenberg, TR 3-0457

**STUDENT & FACULTY
 DISCOUNT TICKETS**
 are NOW
 available for

a Summer to Remember

"unforgettable!"
 —Crowther, N. Y. Times

"A film to see
 without reservation!"
 —Winsten, Post

From MofFilm Studios,
 producers of "Ballad of a Soldier"

MURRAY HILL

34th St. East of Lexington Ave. MU 5-7652

TICKETS ARE AVAILABLE AT

BUY HERE FOR TICKET

USE THIS AD FOR
**STUDENT & FACULTY
 DISCOUNT TICKET**



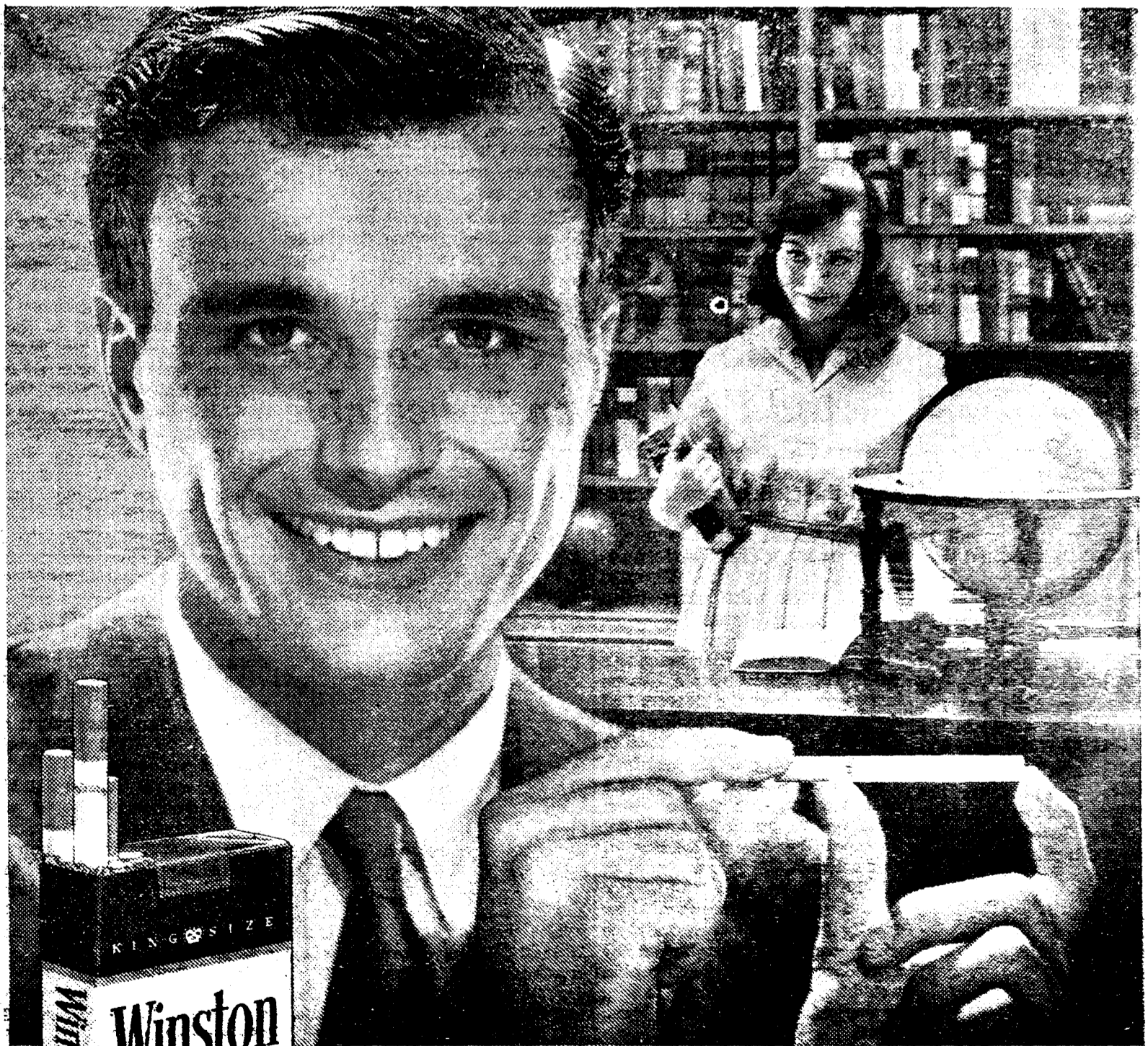
"A POWERFUL
 FILM!"
 —Newsweek

AKIRA
 KUROSAWA'S
**THRONE
 OF
 BLOOD**

Based on Shakespeare's "Macbeth"

**STUDENT & FACULTY
 DISCOUNT TICKET**
 ADMISSION WITH THIS AD 90c
 (except Saturday Evening)

5th AVENUE CINEMA
 at 12th Street - WA 4-8339



It's what's up front that counts

FILTER-BLEND is yours in Winston and only Winston.
 Up front you get rich golden tobaccos specially selected
 and specially processed for filter smoking. Smoke Winston.

WINSTON TASTES GOOD like a cigarette should!

Unbeaten Cagers Face Adelphi Tonight; Meet Brooklyn Friday in Wingate Gym

For the past eight days, the College's basketball team has been working up an appetite for Adelphi and Brooklyn College, two morsels it hopes to down this week. The team started the season with victories over Columbia and Long Island University.

The Beavers will get a chance to gnaw on the Panthers tonight at 8:30 in Garden City, Long Island, and then will combat Brooklyn in Wingate Gym Friday night at 8.

Basketball Tix

Tickets for home basketball games this year are already in students' wallets, according to the College's Athletic Department.

Tom Reilly, Assistant Faculty Manager of Athletics, said Monday that students will now have to present their pink bursar's cards on the night of the game to get in free. Without the cards the admission charge is a dollar.

The department's policy last year was to hand out one free ticket per student a few days before the game. But it was found that of the students who picked up tickets, only fifty per cent used them. The plan could promote a larger turnout, according to Mr. Reilly.

But if the Beavers keep winning, there won't be any spare room on the rafters in Wingate Gym. The ticket plan will be tested this Friday when the Beavers meet Brooklyn at 8.

Trackmen to Race Met Opponents In Development Meet

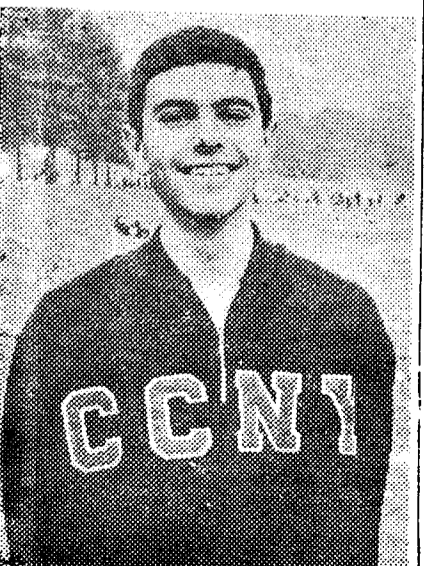
Track coach Francisco Castro is anxious to see what will develop when his team competes in a development meet Saturday at 7 in the 168 Street Armory.

The purpose of the meet is to enable college teams and track clubs in the metropolitan area to run against competition "off the record."

Castro is using the meet to determine in which distance each man runs best. The Beavers' season does not start until February. The only compensation for running will be medals awarded to individual winners.

Castro plans to enter his cross-country stars Paul Lamprinos and Leany Zane in the two-mile event, along with Mike Didyk. Marcell Sierra, a freshman, will run the mile. The Beavers have Bill DeAngelis for the 1,000-yard run and Bill Casey and Bill Hill for the 600.

In the field events, Vince Hanzich will enter the weight throw and shot put, Gerry Fasman will throw the weight and Gene Bartell will compete in the high jump. Bartell can jump 6'1.



PAUL LAMPRINOS

Although the Beavers have been inactive since last Tuesday when they overcame LIU 82-76, they haven't been sitting around for a week. Every afternoon at 4 the squad holds a two-hour practice session to perfect whatever it is that has enabled them to score over 80 points a game.

The practice usually starts off with ball-handling drills carefully scrutinized by coach Dave Polansky. The coach never lets a mistake go uncorrected; he stops the play to tell a man what he should have done. And this thoroughness has paid off for the Beavers so far. Some of them even feel that there isn't a team on the schedule they can't defeat.

One drill that has helped considerably involves several men rapidly working a play up and downcourt and then stopping to take foul shots. This is comparable to foul shooting under game conditions. The opposition so far has found that the idea works to their disadvantage.

The Beavers' first opponent this week, Adelphi, has the height and chunkiness to make things tough for the relatively small Beavers. One thing that might have been going for the Panthers was the fact that they've played three games in the last five days while the Beavers have only been practicing. But Adelphi lost all three, running its season losing streak to five games.

"They'll be anxious to win," says Polansky, cautiously considering the unpredictability of a hungry Panther trapped in a corner. "They're strong boys and they could give us trouble," he said.

Adelphi's big man is 6-5 Howie Gulker, a sophomore who is averaging ten points and is grabbing more than eight rebounds a game. But the Beavers' 6-4 center Tor Nilsen, who is averaging 28 points, probably won't have much trouble with Gulker.

The Panthers have two other scorers in Joe Woltering and Ed Cahill, both under six feet, who are pouring in 12 points a game. However, Cahill injured his finger in a game recently and is a doubtful starter. Norm Vogel, an experienced backcourt man but not a scorer, may replace Cahill in the lineup.

The Beavers should have more to contend with when they meet Brooklyn, a surprisingly strong team so far this season. Although the Kingsmen had a 4-14 record last year, they are 2-0 to date with victories over Brooklyn Poly and Queens.

Steve Scheinblum, a 5-11 guard is Brooklyn's leading scorer with a 20-point average. The little man tallied 27 points against Queens. The Kingsmen also have two of last year's starters, Mike (Stretch) Grossman and Bob Sommer, a large sophomore contingent and transfer student 6-5 Ezra Satz who is a good corner man or fill-in for Grossman at center.

As for the Beavers' two impressive victories, Polansky is pleased but he's not going to leap for joy yet. "Everyone of my first seven men has been coming along nicely," he said.

But isn't the coach sort of excited about the prospect of staying undefeated for the next week or so? "I never get excited. If I got excited, I'd lose my perspective as a coach," he said. "I'm out there to make as many calculated moves as I can.

"But I have an exciting team," he concluded. "I don't have to get these men up for a game—they are up."

Matmen to Tackle Sapora's Favorite Opponent Saturday

If the College's wrestling team loses to Brooklyn Poly Saturday at 2 in Goethals Gym, the shock would be too much for Beaver coach Joe Sapora.



TOR NILSEN

The Beavers have four other starters in the line-up. The Beavers' 6-4 center Tor Nilsen, who is averaging 28 points, probably won't have much trouble with Gulker.

The Panthers have two other scorers in Joe Woltering and Ed Cahill, both under six feet, who are pouring in 12 points a game. However, Cahill injured his finger in a game recently and is a doubtful starter. Norm Vogel, an experienced backcourt man but not a scorer, may replace Cahill in the lineup.

The Beavers should have more to contend with when they meet Brooklyn, a surprisingly strong team so far this season. Although the Kingsmen had a 4-14 record last year, they are 2-0 to date with victories over Brooklyn Poly and Queens.

Steve Scheinblum, a 5-11 guard is Brooklyn's leading scorer with a 20-point average. The little man tallied 27 points against Queens. The Kingsmen also have two of last year's starters, Mike (Stretch) Grossman and Bob Sommer, a large sophomore contingent and transfer student 6-5 Ezra Satz who is a good corner man or fill-in for Grossman at center.

As for the Beavers' two impressive victories, Polansky is pleased but he's not going to leap for joy yet. "Everyone of my first seven men has been coming along nicely," he said.

But isn't the coach sort of excited about the prospect of staying undefeated for the next week or so? "I never get excited. If I got excited, I'd lose my perspective as a coach," he said. "I'm out there to make as many calculated moves as I can.

"But I have an exciting team," he concluded. "I don't have to get these men up for a game—they are up."

Matmen to Tackle Sapora's Favorite Opponent Saturday

If the College's wrestling team loses to Brooklyn Poly Saturday at 2 in Goethals Gym, the shock would be too much for Beaver coach Joe Sapora.

For as far back as I can remember," explains the coach, "Brooklyn Poly is the only team we've always beaten. The record substantiates his memory. The Beavers haven't lost to the Engineers since 1937, the year that Sapora first took over as coach.

As for Saturday, "we'll slaughter 'em," he said. Last year, the Beavers' most impressive victory came against the Engineers. In that 35-5 rout, the matmen won seven of eight bouts, and the man who spoiled the shutout is not competing for Brooklyn Poly this year.

After the Beavers were defeated by Columbia, 27-3, in their opener two weeks ago, Sapora decided to do some juggling in his lineup. Although the first four weight divisions are set with Bob Hamilton (123), Barry Goldlust (130), Harvey Taylor (137) and Phil Rodman (147), the four heavyweight openings will be filled this week in team wrestle-offs.

Heavyweight Jerry Robinson wants to move down a class and will probably challenge Mal Schwartz (177) for his spot. Robinson is in a good position because he will start even if he loses to Schwartz. Bob Lipman would like to walk into Robinson's heavyweight spot.

Mark Miller (157) and Dan Devon (165) will be challenged this week by teammates Marv Chasen and Al Fein, respectively. The only struggle the Engineers may put up could come from Larry Parks (123) and Stan Wolf (177) who posted the only victories in a 26-10 losing cause last week to a weak squad from Seton Hall.

Brooklyn Poly coach Ed Collins agrees that the Beavers have "too much balance and depth." Collins has first hand knowledge; he refereed the Beavers' meet at Columbia.

Brooklyn Poly coach Ed Collins agrees that the Beavers have "too much balance and depth." Collins has first hand knowledge; he refereed the Beavers' meet at Columbia.

Brooklyn Poly coach Ed Collins agrees that the Beavers have "too much balance and depth." Collins has first hand knowledge; he refereed the Beavers' meet at Columbia.

Brooklyn Poly coach Ed Collins agrees that the Beavers have "too much balance and depth." Collins has first hand knowledge; he refereed the Beavers' meet at Columbia.

Brooklyn Poly coach Ed Collins agrees that the Beavers have "too much balance and depth." Collins has first hand knowledge; he refereed the Beavers' meet at Columbia.

Brooklyn Poly coach Ed Collins agrees that the Beavers have "too much balance and depth." Collins has first hand knowledge; he refereed the Beavers' meet at Columbia.

Brooklyn Poly coach Ed Collins agrees that the Beavers have "too much balance and depth." Collins has first hand knowledge; he refereed the Beavers' meet at Columbia.

Brooklyn Poly coach Ed Collins agrees that the Beavers have "too much balance and depth." Collins has first hand knowledge; he refereed the Beavers' meet at Columbia.

Brooklyn Poly coach Ed Collins agrees that the Beavers have "too much balance and depth." Collins has first hand knowledge; he refereed the Beavers' meet at Columbia.

Brooklyn Poly coach Ed Collins agrees that the Beavers have "too much balance and depth." Collins has first hand knowledge; he refereed the Beavers' meet at Columbia.

Brooklyn Poly coach Ed Collins agrees that the Beavers have "too much balance and depth." Collins has first hand knowledge; he refereed the Beavers' meet at Columbia.

Brooklyn Poly coach Ed Collins agrees that the Beavers have "too much balance and depth." Collins has first hand knowledge; he refereed the Beavers' meet at Columbia.

Brooklyn Poly coach Ed Collins agrees that the Beavers have "too much balance and depth." Collins has first hand knowledge; he refereed the Beavers' meet at Columbia.

Brooklyn Poly coach Ed Collins agrees that the Beavers have "too much balance and depth." Collins has first hand knowledge; he refereed the Beavers' meet at Columbia.

Brooklyn Poly coach Ed Collins agrees that the Beavers have "too much balance and depth." Collins has first hand knowledge; he refereed the Beavers' meet at Columbia.

Fencers Duel Harvard Next

Anyone who walks down Convent Avenue late in the afternoon can't miss hearing the clatter of metal striking against metal as he approaches Lewisohn Stadium.

Fencing coach Edward Lucia had his men practicing three hours a day in preparation for their meet with Harvard Saturday at 8.



VITO MANNINO

in Wingate Gym. His team has a 1-1 record.

The Beavers' surprise 14-13 conquest of Yale last Saturday puts new light on the season.

Harvard is not considered a strong squad as Yale. In fact the Crimson should be weaker than they were last year when the College edged them, 14-13, because they have few starters returning. Harvard had a 7-6 record last season.

The Crimson are undefeated so far with victories over Brandeis and Brockport.

But Lucia never underestimated any opponent. "There is no such thing as a weak team in the I League," he said.

The Crimson have four starters back from last year but are stoned for the most part with sophomores. Seniors James Bussy and Paul Winnit, and a junior, John Kennedy, give Harvard strength in the sabre, their only big weapon.

But the foil squad is composed entirely of sophomores and will find it tough to match the Beavers' foil team. The parriers' strongest foilman is Vito Mannino, who has a remarkable 5-1 individual record so far.

Mannino had a triple victory against Yale and took two out of three bouts against a powerful squad from the University of Pennsylvania two weeks ago.

Ed Martinez, a sophomore fencer, was directly responsible for beating the Elis. He took his bout the last of the meet, by a score of 5-3, and with it went the victory.

Bernie Eichenbaum is the Beavers' number one epeeist. He also posted a triple victory against Yale.

Lady Beavers

The College's undefeated women's basketball team travels to Brooklyn College tomorrow to see if it can extend its winning streak to two games.

The Beavettes took the season's opener from the Alumnas 30-28.

"I don't know how good the [the Kingswomen] are, because I haven't seen them," Coach Betty Castro said, but they usually have a tall team and get plenty of rebounds.

Probable starters for the Beavettes are Alita Rosentel, Maggie Kalb, Rae Singer, Rosemary Romero and either Louise Cook or Fran Feuerstein.

Wandler

Swimmers Size Up Scarlets —And Find Them Unbeatable

It was a case of scientific planning last year that enabled the College's swimming team to outmaneuver Rutgers by one point. But when the mermen meet the Scarlets today at 4:30 in the Wingate pool, it will take more than brains to pull them through again.

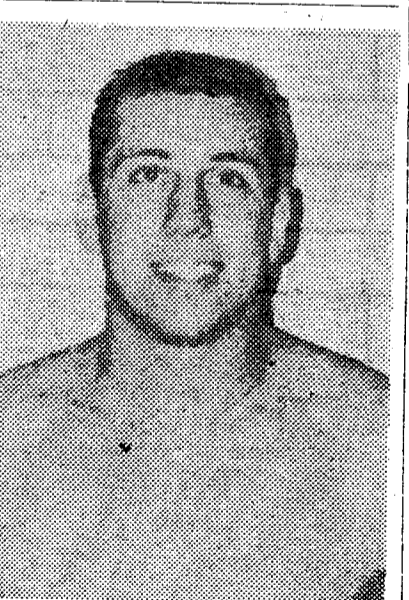
Rutgers is the better team this year. The contest was a toss-up last season when the Beavers had their record-setting co-captains Danny Goldin and Carl Ross to offset the power of the Scarlets. The Beavers wanted to make sure of a victory so a few of them went up to watch Rutgers get swamped by the University of Pennsylvania. They made note of all the Scarlet times.

As a result, the mermen knew exactly in which events to place which men, and they planned the meet down to the times each man would have to hit in order to win. It worked perfectly. They won, 48-47.

On Saturday, Rutgers swept by Fordham 56-30, and naturally the Beavers were on hand. They concluded that Rutgers was even stronger than last year and, man for man, unbeatable.

The Scarlets' iron man is Andy Clark who can do the butterfly in 2:17, 21 seconds faster than the Beaver record and 37 seconds faster than Girand Pessis' time.

Coach Jack Rider thinks his team has a chance to pick up some points in the 50- and 100-



RALPH COHEN

yard freestyle events. Bob Wolleber and Ralph Cohen won these events against Manhattan last Friday with respective times of 25.1 and 57.5.

Rutgers' sprinter Bob Senior took second places against the Rams in both races with times of :25.4 and 56.9, which gives the Beavers some hope. It's usually the man with the fastest start at the gun who wins the sprints.

The Scarlets are slightly weak in the 200-yard breaststroke with their best man frog-kicking it in 2:41. Both Stan Filip and Levene could top him or take second and third places for four instead of five points. But most of the other events are in doubt.