

# THE CAMPUS

Undergraduate Newspaper of the City College Since 1907

VOL. 106—No. 12

THURSDAY, MARCH 31, 1960

401

Supported by Student Fees

## SC to Hold UN Picket Saturday

By Bruce Solomon

Student Council voted last night to move its Saturday picketing activities from 34th Street to the United Nations Building.

A 9-8 vote to protest the South African race riots came immediately after Council defeated a move to consider endorsing the picketing of Woolworth's Department Store for the fifth straight week.

Council member Al Bass '62 said, "we turned down the Woolworth's picketing because of a hint that leftist factions were taking over." Charges have been made that the New York Youth Committee for Integration, which organized the 34th Street picketing, has become dominated by Communist sympathizers.

Jack Mazelis '62, who introduced the motion to picket before the South African delegation to the U.N., sparked a heated debate marked by paper-throwing and a plea by Jay Freeman '60 to stop the "parliamentary trickery" and "hair-picking" by opponents of the move. A tie-breaking vote by Chairman David Bernheim '60 decided the issue.

Ira Reiss '62 said that "we have picketed Woolworth's for the last four weeks because it won't sell hamburgers to Negroes. We must now re-direct our attention to the

(Continued on Page 3)

## City Colleges Receive Increase Of \$9,400,000 in State Aid

### Both Houses Pass Plan

The municipal colleges gained a \$9,400,000 increase in state aid last night.

Both houses of the state legislature approved the increase, which was part of a bill drafted Tuesday, Governor Rockefeller's signature is almost a certainty, since he and Mayor Wagner agreed on the provisions of the bill Saturday.

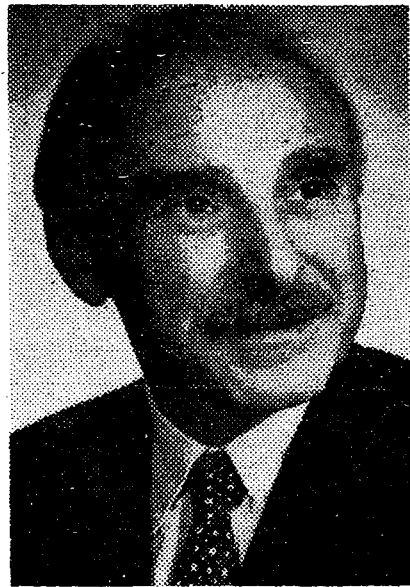
The increase will be used in three areas:

- Teacher training. The state will pay the entire cost of educating teachers at the city colleges. Previously, about seventy percent of the expense was met by the state.

- Operating costs. The state will double its support in this area, paying one-third of the operating expenses for the first two years of undergraduate work. Last year's

### Music Concert

The Music Department will present a concert today at 12:30 in Aronow Auditorium in commemoration of the anniversaries of the births of Frederic Chopin, Robert Schumann and Alban Berg. Admission is free.



BHE CHAIRMAN Gustave Rosenberg spearheaded campaign for increase in state aid.



SEYMOUR WEISMAN, Alumni Association official, expressed early optimism about aid bills.

state aid bill provided one-sixth the cost for the first two years.

- Capital expenses. The state will reimburse half of the interest payments on loans for municipal college construction and other capital projects. No state funds have ever been allocated before in this area.

How much of the increase will go to the College has not yet been determined. However, last year the College received approximately one-fourth of the aid for the four city colleges. If the money is divided the same way this year, the College will receive approximately five million dollars.

Last year, the administration of the funds ran into snags because the state had passed the appropriation in two steps: first, allocating a blanket sum to the city and second, earmarking part of that sum to the city colleges.

The city approved its budget between the steps, and gave the municipal colleges less money than the state aid bill, passed later, provided. In order to balance the city budget, the colleges actually received less aid than the state bill stipulated.

The same situation is not likely

to occur this year, because the city has not yet approved its budget.

The Board of Higher Education, the Alumni Association and municipal college presidents have been pressing for state aid for a number of years. Last year was their first successful campaign. The Mitchell bill, passed at the very end of the legislative session, gave the city colleges 2.7 million dollars.

In this year's campaign, state aid lobbyists showed early optimism. As of three weeks ago, three state aid bills had been introduced to the legislature. The executive secretary of the Alumni Association, Dr. Seymour Weisman, expressed confidence that additional state funds definitely would be forthcoming.

Then two weeks ago, the New

### 'Rights' Program

Bayard Rustin, executive assistant to Martin Luther King, and Conrad Lynn, prominent civil rights attorney, will discuss the "Sit-in Struggle in the South" today at 12:45 in 106 Wagner.

### Gov. Expected To Sign Bill

York Times reported that legislative leaders were seriously considering a plan to merge the municipal colleges with the state university system to give the city colleges more aid. BHE chairman Gustave Rosenberg, who had been in Albany the day before the report was printed, said he had spoken to Governor Rockefeller and legislative leaders, and had not learned of the proposal.

Nothing more about the plan was heard Saturday. Governor Rockefeller and Mayor Wagner agreed on a state aid program that would provide the city with \$41,000,000 outright and power to raise approximately \$40,000,000 more from telephone taxes if the Federal government discontinues the tax.

### Pres. Praises Student Sit-ins



PRESIDENT GALLAGHER

President Gallagher told delegates to the White House Conference on Youth in Washington yesterday that adults "may well take courage" from Southern student demonstrations against segregated lunch-counters.

"Hundreds and hundreds" of Southern students "are submitting to arrest, fines and jail, rather than remain like dumb sheep waiting outside the fold as night comes on," the President said. He addressed one of the assemblies at the Youth Conference.

Dr. Gallagher predicted that "the time is coming" when there will not be "a single segregated school in any corner of the country."

Yesterday Prof. Kenneth Clark (Psychology), another delegate to the conference, criticized the gathering for a lack of interest in integration.

## Clubs Will Have to Hurry To Get Fair Tables Set

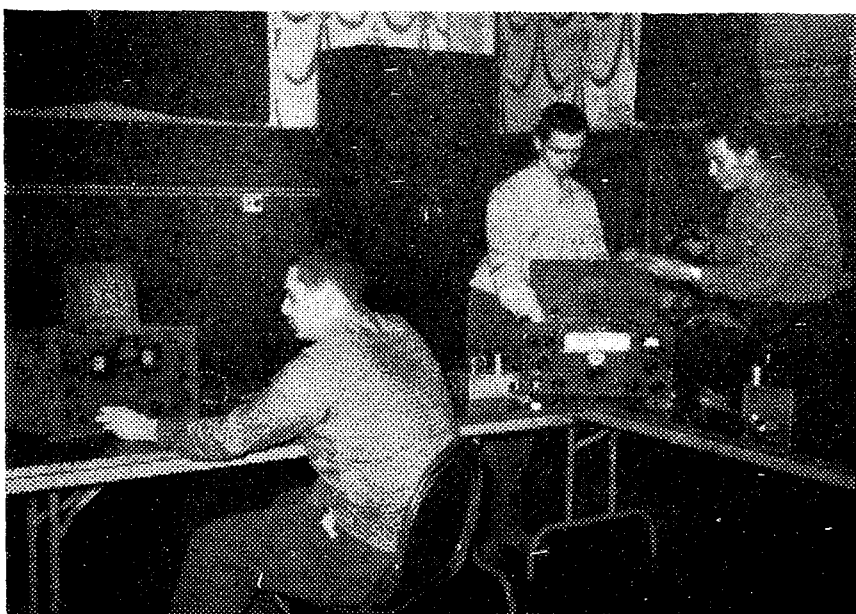


Photo by Grossman

EARLY BIRDS: Three members of Amateur Radio Society display receiver (right) and transmitter.

All but one of the student organizations participating in today's Activities Fair will have to set up their exhibits in a hurry this morning.

Fifteen clubs were supposed to prepare their displays in the Finley Center Grand Ballroom yesterday. But there were no tables to put the exhibits on until late in the afternoon. One group, the Amateur Radio Society, found space to set up a

transmitter and receiver.

The others will work on their displays this morning, before 11, when the Fair begins. The organization with the best exhibit will receive ten dollars and a parchment scroll. Judges in the contest are Profs. Milton Barron (Sociology) and Harold Carter (Education); and Mr. Irwin Brownstein and Dr. David Newton (Student Life).

## Army to Show 'Hawk' Missile At Engineers' Day Saturday

The College's engineers will have their day Saturday, and they will spend it teaching non-engineers all about technology.

The annual Engineers' Day will begin at 10. Twenty students will guide visitors through more than one hundred exhibits in Baskerville, Compton, Goethals and Townsend Harris Halls, and Lewishohn Stadium.

Among other things, the engineers will roll steel, play an electronic organ, show students what their voices look like, and demonstrate the College's nuclear reactor.

The featured display is an Army "Hawk" missile that can travel at 2,150 miles per hour. The sixteen-foot-long missile will be on view in a van between Harris and

Goethals Halls.

Approximately one thousand visitors are expected. If this Saturday is like past E-Days, many of the visitors will be high school students who come to see what the College can offer in engineering fields.

After the E-Day program, the engineers will hold their E-Day Ball in the Finley Center Grand Ballroom at 8:30. Dean William Allen (Technology) will crown the E-Day Queen, who will be chosen at the ball. Tickets are four dollars a couple and can be purchased in 335 Finley or at the door.

# THE CAMPUS

Published Semi-Weekly  
Undergraduate Newspaper  
Of The City College  
Since 1907

VOL. 106—No. 12

Supported by Student Fees

### The Managing Board:

LOIS KALUS '62 Business Manager	SUE SOLET '61 Editor-in-Chief	DON LANGER '60 Associate Editor
BARRY MALLIN '60 News Editor	BRUCE SOLOMON '62 Associate News Editor	BOB JACOBSON '62 Sports Editor
FRAN PIKE '62 Copy Editor	JOAN ZELINS '62 Copy Editor	

CONTRIBUTING BOARD: Dolores Alexander '60, Carole Fried '60, Mike Hakim '61, Mike Katz '60, Fred Martin '61, Marv Platt '60, Linda Young '61.

NEWS STAFF: Dave Bossman '63, Al Boxer '63, Barbara Blumenstein '62, Gene Frankel '63, Larry Grossman '61, Penny Kaplan '61, Harris MacBeth '61, Woody Nelson '60, Margaret Ryan '62, Manny Schwam '61, Bruce Stetson '63, Mike Wolkow '63.

SPORTS STAFF: Mike Brandt '62, Vic Grossfeld '62, Mike Lester '63, Jerry Posman '63

BUSINESS STAFF: Barbara Bromfeld '63, Liz Miller '63, Karen Molishever '63.

CANDIDATES: Arthur Bloom, Ralph Blumenthal, Joan Farber, Neil Goldstein, Olivia Harris, Philip Israel, Arline Kallen, Ron Koenigsberg, Alan Kravath, Ronald Lonesome, Les Porter, Howard Rubin, Arthur Schwartz, Sandra Wadler.

Phone: FO 8-7426.

FACULTY ADVISOR: Mr. Jerome Gold

Editorial Policy Is Determined by a Majority Vote of the Managing Board

## Victory in Albany

A decisive victory was gained last night in the long, uphill fight for increased state aid to the municipal colleges. The continued efforts of the Board of Higher Education, President Gallagher, and the Alumni Association were rewarded by a bill granting the city colleges an additional \$9,400,000 in state aid.

For many years, people concerned with the growth of the municipal colleges have argued that it was impossible for the city to continue footing the costs of the colleges by itself. The increase in enrollment and the need for more teachers and buildings represented a tremendous expenditure.

Last year for the first time a breakthrough was achieved when the state agreed to pay one-sixth of the operating costs for the first two years of undergraduate work at the colleges. The bill passed last night is a clear indication that the state is now willing to accept permanent responsibility for paying part of the costs for the city's municipal colleges.

## New Question

The basis for Student Council's rejection of the Phi Kappa Theta constitution last night brought out some interesting facts.

One, the Student Government constitution contains the only regulation prohibiting racial or religious discrimination by student organizations. Why doesn't the Inter-Fraternity Council have such a clause in its constitution? And why does the Board of Higher Education, which takes pains to prohibit organizations which derogate one particular religion or race, or religion in general, omit a bylaw prohibiting discriminatory membership practices?

Two, the SG constitution allows "religious organizations" to discriminate on the basis of religion. This is a serious fault. For there is no room for any racial or religious discrimination at an educational institution. If religious organizations must discriminate to fulfill their purposes, then they do not belong at the College. It would be unfortunate if instructors were to teach students tolerance while the College allowed student groups to practice racial and religious discrimination.

## Information, Please

On Tuesday, a CAMPUS reporter paid a visit to Mr. Aaron Zweifach, the College's business manager, to ask him whether a replacement for Samuel Sides, the latest ex-cafeteria manager, had been found.

Mr. Zweifach refused to give our reporter any information and told him furthermore that in the future, any news about the cafeterias would have to come from President Gallagher.

At the risk of repeating the boys down the hall, who had the same experience with Mr. Zweifach about a week ago, we are a little mystified by this situation. Is cafeteria information such high policy that it must be given out by the President of the College? Does President Gallagher know more about the cafeterias than Mr. Zweifach, who makes cafeteria policy? Or is Mr. Zweifach trying to avoid publicity on the cafeterias?

The business manager has told us in the past that cafeteria hirings and firings are none of our business. We think that the students who eat in the cafeterias would disagree. We also think it is our duty to find out and their right to know what is happening with the cafeterias.

## Photography Show At Finley Saturday



ROBERT FROST

A portrait of poet Robert Frost will be among the photographs on display at the Popular Photography Traveling Exhibit beginning Saturday in Buittenweiser Lounge.

The exhibit, which will be at the College until April 16, features 100 prize-winning photographs from the magazine's \$25,000 International Picture Contest.

The show is sponsored by the Finley Center Board of Student Managers.

## CLUB NOTES

All clubs meet today at 12:30 unless otherwise noted.

### AICHe

Presents a speech on "Technical Writing as a Career" in 103 Harris.

### AIEE-IRE

Mr. Hurd of RCA will speak about color television in 306 Shepard.

### American Rocket Society

Discusses problems involved in launching a solid fuel ballistic missile at 12:15 in 108 Shepard.

### ASCE

Mr. Irving Greenhouse discusses "Industrial Plants—design and construction" in 301 Compton.

### Art Society

Shows films in 303 Cohen Library on English Life in 1830's and African sculpture.

### Baskerville Chemical Society

Holds a business meeting in Dorenius.

### Beaver Barbell Club

Meets at noon in 11 Lewisohn.

### Biological Society

Prof. Alexander Klots (Biology) will speak in 319 Shepard.

### Caduceus Society

Dr. Helmut Nathan will speak in 315 Shepard on "The Historical Background of Art and Medicine."

### Chess Club

Meets at 12 in 325 Finley.

### Circle Francaise

Mr. Jean Leblon (Romance Languages) will speak on Mamon Lescat in 03 Downer.

### Club Iberoamericana

Dean William Colford (Liberal Arts) will discuss the differences between Brazil and Spanish America in 217 Finley.

### Debating Society

Meets at 12:15 in 01 Wagner. Executive Committee meets at 3:30 in 209 Finley.

### Education Society

Meets in 204 Klapper.

### Electrical Engineering Drama Society

Casts "Bury the Dead" by Irwin Shaw at noon in 222 Shepard.

### -Friends of Music

Meet at 12:15 in 228 Finley.

### Government and Law Society

Mr. Osmond Fraenkel of the American Civil Liberties Union will speak in 212 Wagner on "Legislative Investigating Committees."

### Hillel

Discusses "The Jew in a Christian Community" at 12 in Hillel House, 475 West 140 Street.

### History Society

Donald Barr of Columbia University will speak on "Disraeli: The Literary and Political Imagination" in 105 Wagner.

### Il Circolo Dante Alighieri

Presents highlights of Verdi's Rigoletto in 101 Downer.

### Inter-Varsity Christian Fellowship

Studies the Book of Romans in 208 Harris.

### Musical Comedy Society

Meets at 12:15 in 350 Finley.

### Newman Club

Meets at 12 in the Center, 469 W. 142 Street. Tomorrow at 4 in the Center Thomas Hartman will speak on "Is Revolution Necessary."

### Outdoor Club

Meets at 12 in 312 Shepard.

### Peretz Society

Presents "International Exposition of Poetry-Part II" in 424 Finley.

### Philosophy Society

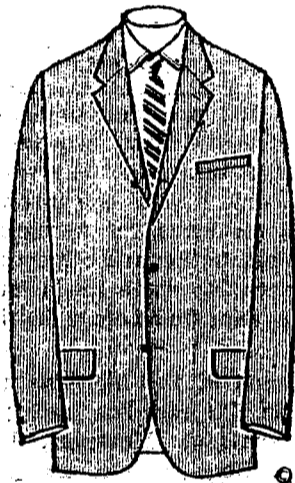
Prof. H. D. Irani (Philosophy) will discuss "Eastern Philosophy" in Townsend Harris Auditorium.

### Physics Society

Dr. Pfeiffer of Columbia University's Astrophysics Department will speak in 105 Shepard.

### Promethean

Holds a workshop tomorrow at 4 in 348 Finley. Deadline for submitting material for this term's issue is April 8.



\$49<sup>95</sup> - \$55<sup>00</sup>

Newly Arrived for Spring

SHORT SLEEVED SPORTSHIRTS

\$3<sup>95</sup> - \$4<sup>95</sup>

TAPERED SLACKS

\$4<sup>95</sup> - \$15<sup>95</sup>

Sir George Ltd.

1620 Amsterdam Ave.  
Between 139th & 140th Streets  
New York 31, N. Y.

OPEN TO 9 P.M.

Now!  
SIR WALTER RALEIGH  
in a Pouch!

Keeps Tobacco

44%  
FRESHER!

New airproof aluminum foil pouch keeps famous, mild Sir Walter Raleigh 44% fresher than old-fashioned tin cans. Choice Kentucky burley—extra aged. Get the familiar orange-and-black pack with the new pouch inside!

No spills when you fill... just dip in!

Open the pack... Out comes the Pouch!



Tearproof—it's triple laminated. Really durable... won't spring a leak. Carries flat in pocket. No bulge. Flexible, too... it bends with you.

Sooner or Later—Your Favorite Tobacco...

SIR WALTER RALEIGH

### Council

(Continued from Page 1)

South African question. After all, what is more important—human lives or hamburgers?"

Herb Dooskin '62 answered that, "there has to be a limit as to what we can do. This thing doesn't directly involve students. Why doesn't somebody on Council bring up a motion to abolish the draft?"

Bob Bisnoff '60 called the problem "deplorable but a purely internal matter" and could not understand "picketing 82 countries because somebody in South Africa rioted."

Earlier Council voted, 12-2-2, to reject the constitution of Phi Kappa Theta, charging that it was a "religious organization" and therefore could not exist as a fraternity.

The PKT Constitution, which was rejected by the Inter-Fraternity Council three weeks ago, contains what members admit is a clause limiting membership to students subscribing to Catholic dogma.

## Fencers Off to Flying Start

At 9 this morning, fencing coach Ed Lucia and his three strongest parriers boarded a plane to Champaign, Illinois and the NCAA championship fencing tournament.

Saberman Harry Mayer, foilsmen Reginald Spooner, and "epeeist" Lonny Johnson are the high-flying Beavers who will meet the best 34 other teams have to offer when the two-day tourney gets under way tomorrow.

Because the Lavender epee squad "has not showed up too well" this season, Lucia selected Johnson, who won 22 of 27 foil bouts in dual-meets, to fence in the epee division.

The 6-2 ex-captain placed fifth Sunday in a thirty-man epee contest of the Amateur Fencing League of America. Johnson's excellent showing against the top-flight AFLA opposition is a good indication that he will do well in the nationals, according to Lucia.

Saberman Andy Kemeny took sixth in his division in last year's NCAA tournament, and was named to the all-America squad. Mayer is Lucia's choice this time

on the basis of his second-place, 7-2 record in the Eastern championships three weeks ago.

The coach feels he has an NCAA medalist and all-American in Mayer, and possibly a national champion.

Lucia's "phenomenal" captain, Spooner, recorded the longest winning streak in the history of the College's fencing team, winning 19 bouts in a row this season. He finished with a 22-4 record in dual meets and was 4-5 in the Easterns.

New York University, Eastern champion is favored to take the NCAA title this year. The Violets edged Navy, the defending NCAA title-holder, by two points this season for the three-weapon crown.

In last year's nationals, Johnson, Kemeny and epeeist Bob Melworm finished eleventh for the College.



REGINALD SPOONER

### Former Trackmen To Compete Here

Several former College track and field stars will compete against the Beaver trackmen tomorrow in a pre-season dual meet in Lewisohn Stadium at 4:30.

The Lavender squad, led by Josue Delgado, Mel Siegel, Ira Rudick and Joel Saland, should meet its toughest competition of the year. Such former stars as Stan Dawkins, George Best, Tom O'Brien, Ralph Taylor and Ike Clark — members of the Bruce Track Club of New York—will be entered in the meet.

The Bruce Club was founded two years ago by members of previous Lavender track teams, in memory of the late Harold Anson Bruce, long-time track coach at the College.

### Classified Ads

Counselors male and female. General, arts and crafts, ceramics. Nearby Day Camp. Interviews all next week. 3810 Greystone Ave., Riverdale, Apartment 506. KI 6-1143. Co-ed wanted - to win a glorious Florida vacation and represent AEPi at its National Convention in Miami. Tape recorder - Revere T 700 with Mike. Reel and patch cord. Good condition. Call LU 3-8254 after 7 P.M. 45 ST. WEST - MALE SEEKS ROOM-MATE TO SHARE 2 1/2 ROOM APARTMENT. Cooking facilities, bath. Convenient to all subways. Immediate occupancy. Ask for Dick Miller - CI 6-0430.

**SQUARE DANCE FUN!**  
Every Friday Night—8 to 11 P.M. at Central Y.W.C.A., 53rd St. and Lexington Ave.  
Featuring popular Square and Folk Dances, with Dick Kraus, Caller!  
Everyone welcome, with or without a partner!  
Admission 75c  
Wear sports clothes.... (NO DANCE ON APRIL 15)

**A Magnificent Florida Vacation can be YOURS if you enter the AEPi SWEETHEART CONTEST TODAY!**

## World Famed Educational Paperbacks

Published by

# Barnes & Noble, Inc.

Booksellers and Publishers Since 1873... Pioneers in Modern Paperbacks



### COLLEGE OUTLINES... Aids to Learning at University Level

BARNES & NOBLE COLLEGE OUTLINES enjoy a unique reputation among educators for their practical approach to learning. Foremost professors and specialists have written and organized these paperbacks to make study time more effective. Essential facts are given in logical order for rapid and easy understanding. Clear, concise, comprehensive, COLLEGE OUTLINES are low in price, yet high in quality... They make ideal study guides, reference and review books for college and advanced high school students, for industrial training, adult education, and for all seeking self-improvement through individual study.

#### BUSINESS & ECONOMICS

- Elementary Accounting, Bauer ..... 1.50
- Accounting Problems, Schabacker ..... 1.25
- Business English, Janis ..... 1.75
- Business Law, Babb ..... 1.95
- Business Management, Shubin ..... 1.95
- Corporation Finance, Harold ..... 1.50
- Principles of Economics, James ..... 1.75
- Marketing, Heidingsfield ..... 1.50
- Money and Banking, Spero ..... 1.50
- Statistical Methods, Arkin ..... 1.75
- Tables for Statisticians, Arkin ..... 1.25

#### ENGLISH & LITERATURE

- English Grammar, Curme ..... 1.50
- American Literature, Crawford ..... 1.75
- Handbook, English Literature, Watt ..... 2.25
- English Literature to Dryden, Otis ..... 1.95
- English Literature since Milton, Otis ..... 1.95
- Outlines of Shakespeare's Plays, Watt ..... 1.25
- Tudor and Stuart Plays, Holzknicht ..... 2.25
- World Lit.: Classics, Trawick ..... 1.50
- World Lit.: Modern, Trawick ..... 1.75

#### ART, MUSIC & SPEECH

- History of Art, Vincent ..... 1.75
- Introduction to Music, Miller ..... 1.50
- History of Music, Miller ..... 1.25
- Speech, Mulgrave ..... 1.50
- Play Production, Nelms ..... 1.95

#### STUDY AIDS

- Term Papers & Reports, Hubbell ..... 1.25
- How to Write Better Exams, Hook ..... .50
- How to Take College Exams, Hook ..... 1.25
- Best Methods of Study, Smith ..... 1.00

#### MATH. & ENGINEERING

- Algebra, Moore ..... 1.50
- The Calculus, Oakley ..... 1.50
- Analytic Geometry, Oakley ..... 1.50
- Analytic Geometry Problems, Oakley ..... 1.95
- Plane Geometry Problems, Horblit ..... 1.25
- College Geometry, Court ..... 2.25
- College Mathematics, Nielsen ..... 1.95
- Logarithmic & Trig. Tables, Nielsen ..... 1.00
- Plane & Spherical Trig, Nielsen ..... 1.75
- Descriptive Geometry, Slaby ..... 2.25
- Engineering Drawing, Lombardo ..... 2.50

#### PHILOSOPHY, PSYCH. & SOCIOLOGY

- Philosophy: An Introduction, Randall ..... 1.75
- Handbook Hist. of Phil, Avery ..... 1.75
- Readings in Philosophy, Randall ..... 1.95
- General Psychology, Fryer ..... 1.50
- Child Psychology, Crow ..... 1.50
- Educational Psychology, Pintrow ..... 1.25
- Readings in Psychology, Crow ..... 2.25
- Principles of Sociology, Lee ..... 1.75
- Readings in Sociology, Lee ..... 2.25
- Religions of the World, Berry ..... 1.00

#### LANGUAGES

- French Grammar, Dumont ..... 1.50
- German Grammar, Greenfield ..... 1.25
- History, German Lit. Friederich ..... 2.25
- Spanish Grammar, Greenfield ..... 1.25
- Latin: Introduction, Wheelock ..... 1.95

#### HISTORY & GOVERNMENT

- Ancient, Med. & Mod. Hist, Rickard ..... 1.50
- History of the Middle Ages, Mott ..... 1.50
- Europe 1500-1848, Littlefield ..... 1.25
- Europe since 1815, Littlefield ..... 1.50
- West. Civiliz. since 1500, Kirchner ..... 1.95
- History of U.S. to 1865, Krout ..... 1.25
- History of U.S. since 1865, Krout ..... 1.50
- History of England, Rickard ..... 1.50
- History of Russia, Kirchner ..... 1.75
- American Government, Sayre ..... 1.50
- Political Science, Jacobsen ..... 1.25

#### SCIENCE

- Anatomy & Physiology: I, Steen ..... 2.50
- Anatomy & Physiology: II, Steen ..... 2.50
- Atlas of Human Anatomy, Frohse ..... 2.95
- Bacteriology, Bryan ..... 2.50
- General Biology, Alexander ..... 1.25
- General Botany, Fuller ..... 1.25
- First Year College Chemistry, Lewis ..... 1.75
- Chemistry Problems, Frey ..... 1.50
- Organic Chemistry, Degering ..... 2.25
- Physical Chemistry, Kittsley ..... 1.50
- Geology, Field ..... 1.25
- Physics, Bennett ..... 1.25
- Physics Problems, Bennett ..... 1.75
- General Zoology, Alexander ..... 1.75
- General Anthropology, Jacobsen ..... 1.75

Use this as a check list... Mark your selections... Take it or send it to your nearest bookseller - or to Barnes & Noble.

**Barnes & Noble, Inc.**  
105 Fifth Avenue  
(at 18th Street)  
New York 3, N. Y.

# It's 'Play Ball' The 'Chief's' 30th Opener This Saturday

By Vic Grossfeld

There will be no holds barred at Lewisohn Stadium Saturday, as the College's lacrosse team opens its season against the University of Pennsylvania at 11.

"We've scouted them," Coach Leon "Chief" Miller said, "and we are prepared for their style of play. On paper I'd have to give Penn the edge, but our boys aren't looking at any paper. They're going out there to win."

Lavender co-captain Charlie Yates said the contest will be "a mild grudge game." The College lost to the Quakers last year, 8-6, on Penn's mudsoaked field with hometown referees.

Nine lettermen from last year's 5-3-1 squad will start for the Beavers. Miller, who missed most of last spring's campaign because of illness, begins his thirtieth season as lacrosse coach here.

Earlier this month, Yates predicted that if Penn won its March 26 practice game against the Long Island Lacrosse Club, the Beavers would have "something to worry about."

The Quakers won it, 7-4. According to frosh coach George

Baron's scouting report, Penn's greatest asset is its zone defense. But the Lavender features a strong attack, with excellent passing and good shooting.

"You might call it a contest between a good defense and a good

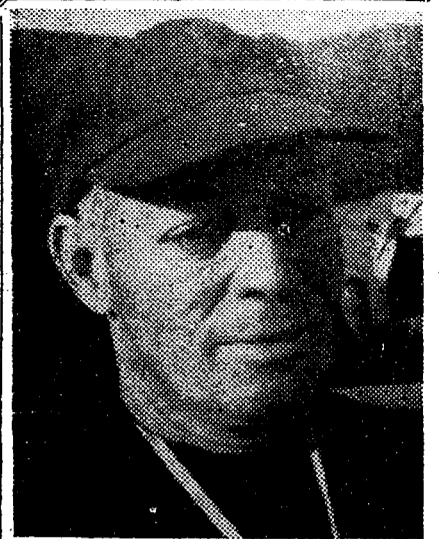
### STARTING LINEUP

Player	Position
Darby	Goal
Schwab	Defense
Gottlieb	Defense
Wepner	Defense
Schwettmann	Midfield
Yates	Midfield
Altk	Midfield
Goldman	Attack
Kolaitis	Attack
Deone	Attack

offense," the Chief said. "I just hope the offense wins."

One of Miller's chief hopes centers about midfielder Fred Schwettmann. The honorable-mention all-America selection was a doubtful starter until early this week because of a shoulder injury.

The goaltending chores, a big problem for the stickmen this



COACH LEON MILLER

season, will be handled by Al Darby. Last year's goalie, Dave Elias, whom Miller has called "great," was graduated.

"Darby looks pretty good so far," the coach said. "That's a break for us because it lets our other goalie, Arnie Schwab, go back to playing defense, where he rightfully belongs."



COACH JOHN LAPLACE

There's an old saying that practice makes perfect, but baseball coach John LaPlace is hoping that it is nothing more than that — an old saying.

His team opens its season Saturday against a strong Wagner squad, but has had only three practice sessions outdoors to date. All four of the Beavers' pre-season practice games have been cancelled because of bad weather.

Despite all the clouds that confined the Beavers for so long in Goethals gym, LaPlace can still find a silver lining.

"The other teams in the league have had the same bad weather and are not any better off than we are," the coach said.

A more important factor, however, is that when the Beavers take the field at Grymes Hill, Staten Island, they will have nine lettermen in the lineup.

The starting pitcher for the College will be Al Riebesehl, a 6-1 bespectacled junior who resembles Ryne Duren until he throws a baseball. Riebesehl is primarily a curve-ball pitcher, although, oc-

### The Starting Lineup

Bill Catterson	First Base
George Lopac	Shortstop
Tim Sullivan	Centerfield
Bill Nicholas	Catcher
Bill Botwinik	Rightfield
Joe Marzio	Leftfield
Pete Magnani	Second Base
Bob Enard	Third Base
Al Riebesehl	Pitcher

asionally, he does sneak a fast ball over.

Riebesehl appeared in only four games last year, posting a 1-1 record with neither decision coming in Met Conference play.

He will be working against a good-hitting team, Wagner, which finished fourth in the league last year, or two spots ahead of the Beavers, has seven returning starters.

Among them are first baseman Jim Powers, who hit four home runs last year to lead the league; Harry Orlando, a third baseman who hit .397 in conference play; and pitchers Bruce Wilson and Dick Rice, each of whom hurled a shutout against the College last year. Wilson will be coach Herb White's starting pitcher Saturday.

Even with nine lettermen in the lineup, LaPlace is unsure of his defense, particularly in the infield. Outside of first baseman Bill Catterson, the rest of the Lavender infielders were reserves last year. Catterson was an outfielder.

# Ghost Charge Haunts Lucky Strike's Dr. Frood

**Dear Dr. Frood:** I am writing my term paper and would like to know how the average professor differentiates between research and plagiarism?  
*Lit. Major*

**Dear Lit:** Plagiarism is when you copy your paper from a book. Research is when you copy your paper from more than one book.

**Dear Dr. Frood:** I was shocked when I read of ghostwriting firms preparing term papers for certain college students. But I was doubly horrified, upset and stunned when I heard a rumor that you, Dr. Frood, also use a ghost. Tell me it isn't so, Doctor.  
*Jacob Marley*

**Dear Jacob:** I categorically deny your accusation. I do not use, nor have I ever used, a ghost to write this column. I admit, however, that when confronted with certain difficult student problems, I have called upon my late departed Uncle Purdy for advice and counsel.

**Dear Dr. Frood:** I have just been informed that there are over 100 brands of cigarettes on the market today. Why so many?  
*Harvey J. Wamerdam*



**Dear Harvey:** Conceivably, there are 100 people in the country who do not smoke Luckies.

**Dear Dr. Frood:** I am a sophomore who has finally mastered every syllable of the Whiffenpoof Song. To my chagrin, I have just discovered that I am not attending Yale. Any suggestions?  
*Jivy Leaguer*

**Dear Jivy:** Fake it, man, fake it!

**Dear Dr. Frood:** I have just completed my doctorate thesis on "The Socio-Political-Religio-Economic Aspects of Tribal Development in Central Africa, 1805-1809." I believe my work has immense popular appeal and would like to have it published in pocket-book form. How does one go about doing this?  
*Ethelbert Pingbank*

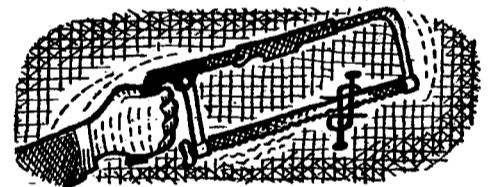


**Dear Ethelbert:** One changes the title to "Love-Starved in Mau Mau Land."

**Dear Dr. Frood:** I am going nuts—nuts, I tell you!—trying to solve this puzzle. Please! What is the secret?  
*Puzzled*



**Dear Puzzled:**



**Dear Dr. Frood:** I didn't make the crew because I get seasick. I couldn't make the baseball team because the resin bag gives me a rash. I was kicked off the track team because cinders kept getting in my eye. And I had to drop tennis because I get vertigo watching the ball go back and forth. What can a great athlete like myself do now?  
*Sig Lee*

**Dear Sig:** Why don't you expose over-emphasis of college athletics in a leading national magazine?

*All you can eat*  
**SIRLOIN STEAK**  
OR FRIED SHRIMPS

only **2.65**

includes baked potato, tossed salad, roll and butter, dessert and coffee.

Served Daily 11 A.M. to 10 P.M.

**HOTEL DIXIE**  
290 West 43 St.  
West of E'way

**HOTEL GEORGE WASHINGTON**  
23 St. & Lex. Ave.

**SERVING GIANT COCKTAILS**  
MEMBER DINER'S CLUB

**COLLEGE STUDENTS SMOKE MORE LUCKIES THAN ANY OTHER REGULAR!**

When it comes to choosing their regular smoke, college students head right for fine tobacco. Result: Lucky Strike tops every other regular sold. Lucky's taste beats all the rest because L.S./M.F.T.—Lucky Strike means fine tobacco.

**TOBACCO AND TASTE TOO FINE TO FILTER!**

Product of The American Tobacco Company—"Tobacco is our middle name."