

# THE CAMPUS

Undergraduate Newspaper of the City College Since 1907

VOL. 106—No. 3

TUESDAY, FEBRUARY 16, 1960

401

Supported by Student Fees

## Bill Introduced to Triple State Aid to City Colleges

By Larry Grossman

A bill granting an additional seven million dollars to the municipal colleges was introduced in the State Legislature last night by Senator MacNeil Mitchell (R-Manhattan).

The bill would more than triple the amount now paid by the state, exclusive of teacher education. Under a bill passed by the legislature in 1959, the state now pays one-sixth of the operating costs for the municipal colleges.

The additional aid would make it possible for the colleges to "admit more students, strengthen counseling and guidance services, and meet inflation," according to Gustav Rosenberg, chairman of the Board of Higher Education.

Under the 1959 bill, also introduced by Senator Mitchell, the colleges will receive \$2,700,000 for 1959-1960. The schools covered by the bill are City, Hunter, Brooklyn and Queens Colleges.

The new proposal will first be given to a committee for further study. "We hope it will come up for vote in several weeks," Dr. Rosenberg said last night.

The bill, Dr. Rosenberg said, is "an acknowledgement of the common purpose of city and state in higher education. The service required of the municipal colleges has grown beyond the capacity of the city to support alone.

Earlier this month, the Board of Higher Education submitted a request to the state for a million dollars in the form of a supplementary budget. The board also

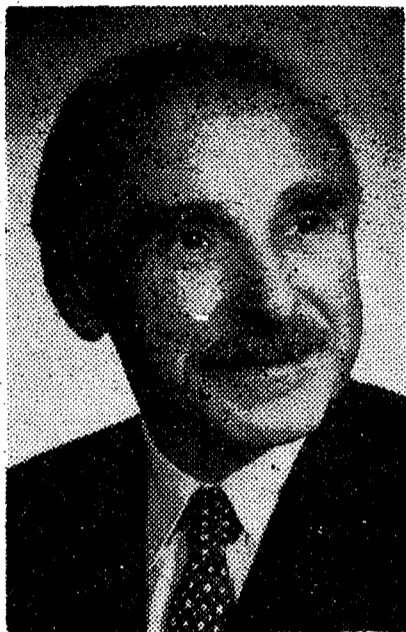
## 'South Pacific' Star To Appear at Rally



JUANITA HALL

Juanita Hall, a star of the Rodgers and Hammerstein musical, "Flower Drum Song," will appear at a rally of the Musical Comedy Society in the Finley Center Grand Ballroom Thursday from 12:30 to 2. The rally will promote the MCS performance of "Damn Yankees," to be presented March 4 and 5.

Miss Hall is best known for her portrayal of Bloody Mary in "South Pacific." Robert Morse, who appears in the Broadway show "Take Me Along," also will be a guest at the rally.



DR. GUSTAV ROSENBERG, BHE Chairman, hailed bill for additional state aid.

asked for an increase of two million dollars in its regular budget.

Senator Mitchell's bill far exceeds the \$100,000 increase in state aid requested by Governor Rockefeller in his budget.

## SF Cafeteria Committee To Hold Special Meeting

By Fran Pike

As a result of the recent controversy over cafeteria management and new student complaints about cafeteria operation, the Student-Faculty Cafeteria Committee will hold a special meeting Thursday.

The meeting was called in response to a letter by Al Snadowsky '60, a student member of the Committee, requesting "an" evaluation of the responsibilities of the Student-Faculty Cafeteria Committee and a complete investigation of the cafeteria operation."

Snadowsky said he wrote the letter because "so many student complaints are being voiced, I felt it my obligation to get something started to solve all the problems."

The most recent complaint was a letter by Carl Jerome '63, describing and severely criticizing some of the conditions under which cafeteria employees work. It was printed in *Observation Post* last Thursday.

Jerome stated that he was "shocked" to discover that:

- Cafeteria employees do not receive unemployment insurance.
- Some were laid off during intersession and were not paid for two weeks.
- One receives a salary of less than \$35 a week for forty hours' work a week.

Mr. Aaron Zweifach, the College's Business Manager, said the law prohibits college cafeteria employees from taking out unemployment insurance. It is also required that the workers receive salaries only when they work, which is why they could not be paid over intersession, he said.

## DSL Reorganizes To Offset Effects Of Loss of Slade

The Department of Student Life has just completed a "juggling of responsibilities" to compensate for the resignation last of term of Mr. Irving Slade, Dean James S. Peace (Student Life) said yesterday. Mr. Slade was financial advisor to student organizations.

No one has been hired to replace him because "everyone can do a little more," Dean Peace said. "We're trying to put more shoulders to the wheel to see if we can get by."

There are, however, sufficient funds for more personnel. "If we can't get by, we'll hire someone else," the Dean said.

Under the new arrangement, most of Mrs. Slade's financial duties have been taken over by Mr. Edmund Sarfaty (Student Life). Dr. Richard Brotman (Student Life) will assist Mr. Sarfaty in allocating funds for the College's magazines.

The supervision of foreign students is the responsibility of Miss Margaret Green (Student Life).

## Council to Weigh Removal of Officers

By Bruce Solomon

Student Council will decide tomorrow whether it will keep its president and vice-president.

Council will determine if Student Government President David Bernheim '60 is eligible to hold his office, and if Vice-president Jerry Pitkowsky '61 should be impeached.

Last week Council postponed consideration of the situation "in order to give the members . . . the opportunity to inform themselves of the facts involved."

Bernheim and Pitkowsky have refused comment on the situation since the last SC meeting. However, Secretary Karen Davis '60, said that during the week the two officers had discussed the situation with other Council members, as well as each other, and indications now seemed to point toward a "peaceful settlement."

Council member Bill Lentsch '63, whose anger at a private letter by Pitkowsky led him to threaten to demand the vice-president's impeachment last week, said he had since changed his mind. He said: "I talked to Jerry last week, and decided that there was no underhanded intent involved [in his attempt to persuade two freshman girls not to run for Council seats because they would find Council meetings 'boring.']. As Dave said, Jerry merely did a very stupid thing in writing the letter."

Pitkowsky's suspicion that Bernheim had shown the letter to others with the "deliberate intent" of it reaching the newspapers prompted his search through the SC minutes of Fall 1957. He claimed the minutes show that Bernheim did not attend the re-



DAVE BERNHEIM faces charge of ineligibility to hold his post as SG president.

quired number of eight Council meetings.

Bernheim said he has a letter from Bart Cohen, then SG President, affirming that Bernheim had attended the required eight meetings in the Fall 1957 term. Ralph Dannheiser '58, whose job as chairman of the membership committee that term included the taking of attendance at Council meetings, said yesterday he was sure Bernheim attended more than the one shown by the minutes. He agreed with Bernheim that the minutes were "poorly kept."

Lentsch suggested the question might resolve itself by what would amount to a "vote of confidence" at the meeting tomorrow. "It was Student Council which adopted the attendance requirement in the first place, and under the by-laws, Council can waive the rule in this case if it so chooses," he said.

## Cagers Close St. John's Series With 93-67 Loss to Redmen

Chapter Two of "The Last of the Traditional Rivalries" entered the books last night at Wingate gym where the College's basketball team lost its toughest game of the season, to St. John's, 93-67.

The Beavers hung on during the opening minutes, though, and held a 13-9 lead with 5:30 gone in the first half. But then the Redmen decided the joke had gone far enough.

With the help of three Lavender fouls, the visitors accumulated ten straight points in the next three and a half minutes, and from then on it was a matter of how badly they could beat the College.

Sinking all but two of 22 free throws in the first half, and sparked by Tony Jackson's 14-point explosion in the initial period, the Redmen opened up to a 40-29 advantage at half-time. They went on to hit for a total of 32 for 62 shots from the floor for 52 percent.

Center Shelly Bender starred for the Beavers in the first half as he collected 11 points and stole three passes. But Bender drew four personals during that time,

and contributed only one more point to the Lavender score before the game ended.

Sophomore Tor Nilsen came through with 13 points in the second half, however, and finished high for the Lavender with 17.

In addition to Jackson, who scored 22, big guns for the Redmen were Ivan Kovac and Gary Morozas, with 18 and 13 points, respectively.

The loss was the Beavers' fourth in a row, following their victory over Kings Point early this month. They have won four and lost ten.

### Frosh Defeated, 73-59

In the preliminary contest, St. John's freshmen team defeated the Beaver cubs, 73-59. The cagers' record is now 6-7.

Mel Marshall and Don Sidat led the frosh with 22 and 15 points, respectively. Don Burks was high man for the St. John's with 17 points.



BUSINESS MANAGER Aaron Zweifach answered charges of mistreatment of employees.

"We realize this is not fair to them, but we have no choice in the matter," Mr. Zweifach said.

"As for an employee receiving only \$35 a week—this is an impossibility. All the cafeteria workers receive at least a dollar an hour. He must have been talking about take-home-pay."

He said that the salaries of the cafeteria employees are increased every term—five cents an hour.

He further maintained that there was no need to hire more help to keep the cafeterias in good condition. "What we need is a greater degree of student cooperation," he asserted.

Tomorrow, Student Government President Dave Bernheim '60 will ask Student Council to set up a fact-finding committee on the cafeterias.

**THE CAMPUS**  
 Published Semi-Weekly  
 Undergraduate Newspaper  
 Of The City College  
 Since 1907

Vol. 106—No. 3 Supported by Student Fees

**The Managing Board:**

MIKE KATZ '60 Managing Editor	SUE SOLET '61 Editor-in-Chief	LOIS KALUS '62 Business Manager
BARRY MALLIN '60 News Editor	DON LANGER '60 Associate Editor	BOB JACOBSON '62 Sports Editor
FRAN PIKE '62 Copy Editor	BRUCE SOLOMON '62 Associate News Editor	JOAN ZELINS '62 Copy Editor

**CONTRIBUTING BOARD:** Dolores Alexander '60, Carole Fried '60, Mike Hakim '61, Fred Martin '61, Marv Platt '60, Linda Young '61.

**NEWS STAFF:** Dave Bossman '63, Al Boxer '63, Gene Frankel '63, Larry Grossman '61, Penny Kaplan '61, Harrison Macbeth '61, Woody Nelson '60, Margaret Ryan '62, Manny Schwam '61, Bruce Stetson '63.

**SPORTS STAFF:** Mike Brandt '62, Vic Grossfeld '62, Mike Lester '63, Ed Lukashak '63, Jerry Posman '63.

**BUSINESS STAFF:** Barbara Bromfeld '63, Liz Miller '63, Karen Molishever '63.

**ART STAFF:** Joan Lipson '62, Frank Palma '61.

**CANDIDATES:** Gloria Bletter '62, Arthur Bloom '62, Joan Farber '63, Ronald Lonsome '63, Gediminas Nanjokaitis '62, Howard Rubin '62, Sandra Wadler '62.

*Editorial Policy Is Determined by a Majority Vote of the Managing Board*

Phone: FO 8-7426.

FACULTY ADVISOR: Mr. Jerome Gold

### Reinvestigation

There soon will be two committees investigating the conditions in the College's dining rooms. The Student-Faculty Cafeteria Committee, which made its annual report last term, has been called into special session by Prof. William Gondin (Speech) a faculty member. Tomorrow, Student Council will be asked to form a fact-finding committee of its own by Student Government President David Bernheim.

Last term the student-faculty group blamed students for the most outstanding problems of the cafeteria—dirt, and the present level of prices. Although students cannot be entirely blameless, the charges of committee members were a superficial answer to cafeteria problems. We think that with more thought, and a more careful investigation, the Student-Faculty Cafeteria Committee will do a better job this time.

And this type of investigation probably will be an invaluable aid to the new cafeteria manager, Samuel Sides. In the present situation—one of confusion over the reasons for his predecessor's departure and continued complaints about the operation of the cafeterias—Mr. Sides is placed under an immediate handicap. An analysis of cafeteria problems by an impartial group will help him to institute the changes that are necessary to improve cafeteria conditions.

Since we have eaten our meals in the cafeteria for quite a while, we have learned to be patient. We are not asking the committee and Mr. Sides to solve all the cafeteria problems by next week. But we expect some concrete proposals to improve the College's dining areas before the term is over.

### A Precedent

Last summer the state legislature gave the Board of Higher Education approximately \$2,700,000 in return for the enrollment of out-of-town students in the municipal colleges. It was an unprecedented grant, and was hailed by the BHE as an affirmation of the principle that the state should contribute to the city's efforts in higher education.

If State Senator MacNeil Mitchell (R-Manhattan) is as successful this year as he was in 1959, the city colleges will receive approximately three times the amount of aid they were granted under the Senator's 1959 bill. And the increase is needed.

The city has insisted that no new projects be included in the BHE's budget request. Therefore the city colleges can look only to the state to provide funds to ease overcrowding and aid the many students whose education might benefit themselves and the nation, but who are excluded from the municipal colleges by high entrance requirements.

To set a precedent of state aid is not enough. Only increased state support can provide the funds for the necessary expansion of the city's free colleges. We strongly urge that the state legislature approve Senator Mitchell's new bill.

### The Substitute

Dean James S. Peace (Student Life) said yesterday that the Department had been able to redistribute Mr. Irving Slade's duties among DSL staff members after the former financial advisor to student groups resigned last term.

Either no one could replace Mr. Slade or no one was needed to replace him.

### News in Brief

**Music Hour Today**  
 The College's chapter of Tau Beta Pi, the national engineering honor society, will present the first of its "Music Listening Hours" in the Knittle Lounge in Shepard Hall today from 12 to 2. The recorded program will include works by Mozart, Bach and Leonard Bernstein.

**Dramsoc to Audition**  
 Dramsoc will hold auditions for its forthcoming production of "The Skin of Our Teeth" from 3-5 on the following days: Thursday in 424 Finley, Friday in 212 Finley; next Tuesday in 424 and next Wednesday in 417.

**Caduceus Applications**  
 Applications for membership in the Caduceus Society, the College's pre-medical organization, are available on the bulletin board outside 320 Shepard.

**SG Vacancies**  
 Vacant Student Government positions will be filled at the Student Council meeting tomorrow at 4 in 121 Finley. Students who wish to run for the positions must be present in order to be nominated. Still open are three seats on Council from the Class of '60, two from the Class of '62 and two from the Class of '63.

**OPEN HOUSE**  
 and  
**Beer Drinking Contest**  
 at KAPPA PHI OMEGA  
 42 Flatbush Ave., Brooklyn  
 At 8 P.M. February 19 and 26



...the tobacco that outsells all other imported tobaccos combined! Try it and your very first puff will tell you why. There's more pleasure in smooth-smoking, even-burning, long-lasting, mild AMPHORA.  
 Popular priced, and more for your money, too—full 2 ounces in every pack! Blended in Holland. In handy pouches and tins. Come in and try it today!

**40c**  
**2-OZ POUCH**



**TRY A PIPEFUL AT THE DEALER NEAREST YOU**

## Over-Coffeed?

**PI LAMBDA PHI SMOKER, FEB. 19**  
**7 WASHINGTON PL. 8:30 WA. 3-5482**



**On Campus** with **Max Shulman**  
 (Author of "I Was a Teen-age Dwarf", "The Many Loves of Dobie Gillis", etc.)

### APPAREL OFT PROCLAIMS THE MAN

The hounds of spring are on winter's traces. Soon we will be shedding our mukluks and union suits and putting on our spring finery. And what does Dame Fashion decree for the coming season?

(Dame Fashion, incidentally, is not, as many people believe, a fictitious character. She was a real Englishwoman who lived in Elizabethan times and, indeed, England is greatly in her debt. During the invasion of the Spanish Armada, Dame Fashion—not yet a Dame but a mere, unlettered country lass named Becky Sharp—during the invasion, I say, of the Spanish Armada, this dauntless girl stood on the white cliffs of Dover and turned the tide of battle by rallying the sagging morale of the British fleet with this stirring poem of her own composition:

*Don't be gullest,  
 Men of Britain,  
 Swing your cutlass,  
 We ain't quillin'.*

*Smash the Spanish,  
 Sink their boats,  
 Make 'em vanish,  
 Like a horse makes oats.*

*For Good Queen Bess,  
 Good sirs, you gotta  
 Make a mess  
 Of that Armada.*

*You won't fail!  
 Knock 'em flat!  
 Then we'll drink ale  
 And stuff like that.*



*In 1589 she invented the egg...*

As a reward for these inspirational verses Queen Elizabeth dubbed her a Dame, made her poet laureate, and gave her the Western Hemisphere except Duluth. But this was not the extent of Dame Fashion's services to queen and country. In 1589 she invented the egg. In 1590, alas, she was arrested for poaching and imprisoned for thirty years in a butt of malmsey. This later became known as Guy Fawkes Day.

But I digress. Let us get back to spring fashions.

Certain to be popular again this year is the cardigan (which, curiously enough, was named after Lord Cardigan, who commanded the English fleet against the Spanish Armada. The sweater is only one product of this fertile Briton's imagination. He also invented the ball-peen hammer, the gerund, and the molar, without which chewing, as we know it today, would not be possible).

But I digress. The cardigan, I say, will be back, which is cause for rejoicing. Why? Because the cardigan has nice big pockets in which to carry your Marlboro Cigarettes—and that, good buddies, is ample reason for celebration. Do you think flavor went out when filters came in? If so, you've got another smoke coming. I mean Marlboros—all the rich, smooth flavor of prime tobaccos plus a filter that really filters. So slip into your cardigan and hie yourself to your tobacconist for some good Marlboros. They come in soft pack or flip-top box. Cardigans come in pink for girls and blue for boys. © 1960 Max Shulman

*If you're a filter smoker, try Marlboros. If you're a non-filter smoker, try Philip Morris. If you're a television watcher, try Max Shulman's "The Many Loves of Dobie Gillis"—Tuesday nights, CBS.*



# • IN THE NEWS •

## New Cafeteria Manager Smiles While He Works

Sam Sides, the College's new cafeteria manager, tries to see humor in everything but the dirt in the cafeteria.

Mr. Sides took over the job yesterday at 8 in the morning. By 2 in the afternoon he had been hanged by twenty food salesmen. He said he greeted them all with a smile.

The College's atmosphere is new to Mr. Sides, who does not have a college education. What he has found so far, in the cafeteria at least, does not please him. "Dirt in the cafeteria is more or less the students' fault," he said. "They sit at a table and eat; then they sweep the garbage onto the floor with their arms. If they did it at home their mothers would crack their skulls."

He intends to make students clean up by pressuring them—"in a nice way."

Mr. Sides' lighthearted disposition carries over into everything he does. He laughed when he said that mothers would crack their sons' skulls and when he said he hoped students wouldn't deluge him with requests for jobs at Browns' Hotel Loch Sheldrake where he had worked intermittently for ten years.

"I've been in the food business for twenty years and I find it a fascinating challenge," he said.

"Why are you interested in food?" he was asked.

Mr. Sides, who is a portly man, laughed heartily.

As cafeteria manager, Mr. Sides will be responsible for ordering food, supervising its preparation, and supervising cafeteria personnel. He said he has no special plans for the future. The only definite thing, he said, is that "I didn't come here with a hatchet to chop heads off."

Just prior to coming to the College Mr. Sides was the Food Administrator at Lakeside Hospital in Long Island. He also has worked for Sportservice, a company that supplies food to air-

## Bobby Sand Hurt In Auto Accident

Mr. Harry R. (Bobby) Sand, a member of the College's Planning and Design division and assistant coach on the College's 1950 "Grand Slam" championship team, was injured Sunday when a car he was riding in skidded down a 25-foot embankment on the Pennsylvania Turnpike.

Mr. Sand, coach of the Williamsport team in the Eastern Professional Basketball League, and three team members were returning to New York after a ballgame. Ed Warner, a star of the 1950 team, was the driver of the car.

All four occupants of the automobile were reported in fair condition in Gnadon-Huetton hospital in Lehigh, Pa. Mr. Sand, who suffered cuts and bruises in the accident, is expected to be released today.

Mr. Sand lost his job as assistant basketball coach here after the basketball scandals in 1951. He has since made a number of appeals to the College administration for reinstatement to a teaching position in the Hygiene Department. An appeal by Mr. Sand now is pending before State Commissioner of Education James Allen.



SAMUEL SIDES

lines, racetracks and bowling alleys throughout the country.

"I moved around on that job so much, I never knew where I was from day to day," he said with a broad smile.

## Fordham

(Continued from Page 4)

the College, 28-27, for the first time in the contest.

By the time Bender had returned and scored the first Lavender goal of the half, with less than 12 minutes remaining, the Rams were nicely out of reach, 36-27.

Tor Nilsen, whose 12 points was high for the Beavers, hit the target on two straight jump shots with about seven minutes left, as the cagers kept the pace.

But shortly after Bender fouled out with 3:40 to go, the Rams jumped to their biggest lead at 55-41. Only Mike Gerber, who replaced Bender, prevented a Fordham runaway. The 6-1 sophomore scored five of the College's last seven points.

Despite their erratic shooting in the first half, the Rams finished with a 44% field-goal mark over the Beavers' 34%.

Andariese, who went 0-9 from the floor in the opening period, emerged with 16 points to lead Fordham in scoring. Maynard was second for the Rams with 14, and Delatorre hit for ten points.

—Jacobson

## Camp Counselors

Sophs or Higher

BROTHER-SISTER CAMPS IN PENNSYLVANIA

We will visit your campus on March 16th.

See your Placement Office — Finley 423

Camp Swago - Camp Swatonah

## Learn French, German, Spanish In Europe This Summer

DURING A SIX-EIGHT WEEK STAY IN

Berlin, Besancon, Grenoble, Santander, Vienna

- About 135-150 hours of intensive instruction in small classes on language, literature, history, culture
- Residence with native families and full participation in the life of the community.
- Attendance at cultural events: theatre, opera, movies, concerts, museums, factories, religious institutions.
- Auditing privileges at local universities and full participation in student activities.
- Weekend trips in private cars to points of interest.
- Choice between two weeks of independent travel or guided tour after the study period.
- For beginners and advanced students.

Write to:

CLASSROOMS ABROAD

4171 University Station

Minneapolis 14, Minnesota

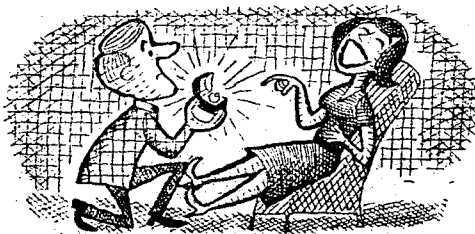
LUCKY STRIKE presents

# Dear Dr. Frood:

## FROOD TELLS HOW TO CLEAN UP ON YOUR LAUNDRY

(see below)

**Dear Dr. Frood:** I told my girl I was in love, and she laughed. I told her I wanted to get married, and she laughed. How can I make her realize that I'm serious?  
*Serious*



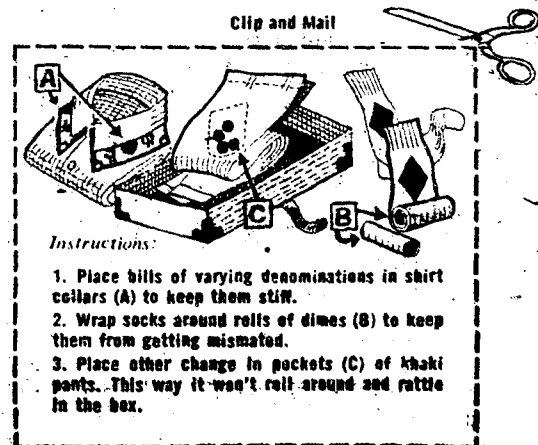
**Dear Serious:** Marry someone.

**Dear Dr. Frood:** I have been having trouble sleeping at night. Do you think it could be because I drink coffee?  
*Wide-Eyed*

**Dear Wide-Eyed:** Possibly. It's very difficult to sleep while drinking coffee.

**Dear Dr. Frood:** A lot of the guys complain because their mothers don't pack their laundry boxes properly. Is there a certain way they should be packed?  
*Spokesman*

**Dear Spokesman:** Indeed there is. Clip out the instructions below and mail them to your mother.



**Dear Dr. Frood:** Do you believe in the old adage, "Choose a girl by ear rather than by eye"?  
*Shopping*

**Dear Shopping:** This maxim is indeed a fine guide for any young man who is looking for a girl. But while choosing by "ear rather than by eye," he should also make sure she has two of each.

**Dear Dr. Frood:** Every night I come home tired and I find the house in a mess. There are dirty dishes and pans in the sink, and clothes are thrown all around. I'm fed up. What should I do?  
*Married Student*



**Dear Married Student:** You should notify the police. Someone has obviously been there.



Dr. Frood, Ph.T.T.

**Dear Dr. Frood:** How far ahead should I call for a date?  
*Straight Arrow*

**Dear Straight Arrow:** It depends. Some girls must be called at least a week in advance. With others, you just holler as you enter the dorm.

**Dear Dr. Frood:** My husband is an absent-minded college professor. He went out 7 years ago to buy a pack of Luckies and hasn't returned yet. I don't know what to do.  
*Patience*

**Dear Patience:** Better buy another pack. He's probably smoked them all by now.

## COLLEGE STUDENTS SMOKE MORE LUCKIES THAN ANY OTHER REGULAR!

When it comes to choosing their regular smoke, college students head right for fine tobacco. Result: Lucky Strike tops every other regular sold. Lucky's taste beats all the rest because L.S./M.F.T.—Lucky Strike means fine tobacco.



TOBACCO AND TASTE TOO FINE TO FILTER!

Product of The American Tobacco Company — "Tobacco is our middle name!"

# Cagers Make It Tough For Fairfield, Fordham

## Gerber Scores 20 In League Defeat

The College's basketball team, reduced to being would-be "spoilers" in its first season in the Tri-State League, failed in that role Saturday night.

The Beavers, despite a surprise twenty-point performance by sophomore Mike Gerber, were defeated by Fairfield University, 75-58, on the winner's Connecticut court.

The victory gave Fairfield a 6-1 league record and allowed the Stags to remain a half-game behind first-place Bridgeport University. The Lavender is 2-6 in league play.

The final score was not indicative of the closeness of the game. As late as midway through the final half, the Beavers trailed by only four, 48-44. But in the next minute, the Stags expanded their lead to nine points and coasted the rest of the way.

If it hadn't been for Gerber, the Beavers would never have come close to the sharpshooting Fairfield squad. Gerber, coming off the bench in the first half, scored eleven points before intermission, mainly on drives.

The only other College player who was effective against Fairfield was Shelly Bender. The 6-5 center scored 14 points and grabbed 16 rebounds.



MIKE GERBER led Beavers at Fairfield with 20 points.

### Frosh Cagers Lose 2

The Beaver freshmen also met defeat against Fairfield and Fordham, although Mel Marshall and Don Sidat continued their high-scoring ways for the College.

The cagers lost to Fairfield, 74-58, Saturday night at the victors' fieldhouse, winding up on the short end of a 90-56 trouncing by the Rams.

Marshall topped Lavender scoring efforts in both games with 16- and 20-point outputs. Sidat hit for 15 against Fordham and for 17 at Fairfield.

## Lead Rams at Half, 26-19, Then Lose

Even the skeptics began to wonder as the Beavers worked up to a 26-19 half-time lead over a favored Fordham quintet Thursday night in Wingate gym.

The Rams won though, 57-48, but not before the cagers had shown plenty of reasons for continuing the rivalry, which started in 1906, beyond Thursday's series finale.

Deprived of backcourt stars Marty Groveman and Guy Marcot, who were graduated last week, the Beavers played steady and controlled ball throughout the opening period. The baffled Rams hit for only five of 29 field goal attempts in the first twenty minutes.

But the Beavers had to pay for this temporary success, and it cost them the game. With Lavender center Shelly Bender watching from the bench, after having committed four fouls in the first half, Fordham began a 17-point scoring spree as the second period opened.

Beaver captain Julio Delatorre, who sparked the College with eight points in the initial half, was cautiously nursing his own three personals as the Rams' John Andariese, Dee Maynard and Bill Larkin helped Fordham overtake

(Continued on Page 3)

# Mariners Send Matmen To 4th Straight Defeat

A faltering Beaver wrestling squad was handed its fourth consecutive defeat by a powerful Kings Point team, 21-8, at the Merchant Marines' gym Saturday. The matmen have not won since their season-opening victory over Brooklyn Poly.

Ron Alter, returning to action after being sidelined since the beginning of the season by illness, and Dave Borah recorded the only Beaver victories. Alter (137) gained a 5-2 decision over Kings Point's John Yakanich, and Borah (147) was victorious over William Ingoglia by a 9-1 score.

Lavender captain Myron Wollin (130) tied Mike McGowan, 4-4, for the College's other two points. Tom Lopez (167) was beaten, 3-2, by Steve McCain in the closest loss for the matmen.

In a preliminary contest, the frosh wrestlers, coached by William Loughlin, absorbed their second consecutive defeat, 36-0, at the hands of Kings Point's junior varsity squad. The freshmen lost all but two bouts by pins.

—Lester

## Track Team Wins Quadrangular Meet

The College's track team, paced by its sprinters and field men, defeated Hunter, Queens, and Kings Point in a quadrangular indoor meet at the Queens gymnasium Saturday.

Charlie Bond, Mel Siegel, Joel Saland and Ira Rudick took first place for the Beavers in the mile relay with a clocking of 3:39.8, and the frosh relay team finished third. Rudick also won the 440-yard dash in 55.4 seconds, and freshman Bill Casey was runner-up in 55.5.

In the field events, the Lavender scored 13 points to clinch its victory. Bob Siedlecki tied for first place in the shot put and Vince Hanzich was third.

## SIGMA ALPHA MU FRATERNITY

Alpha Chapter

### National Fraternity Smoker

FRIDAY, FEBRUARY 19 • 51 IRVING PLACE

(17 Street between 3rd and 4th Ave.)

Non-Hazing, Non-Discriminatory, Tops in Scholarship on Campus

## C. L. Hampton

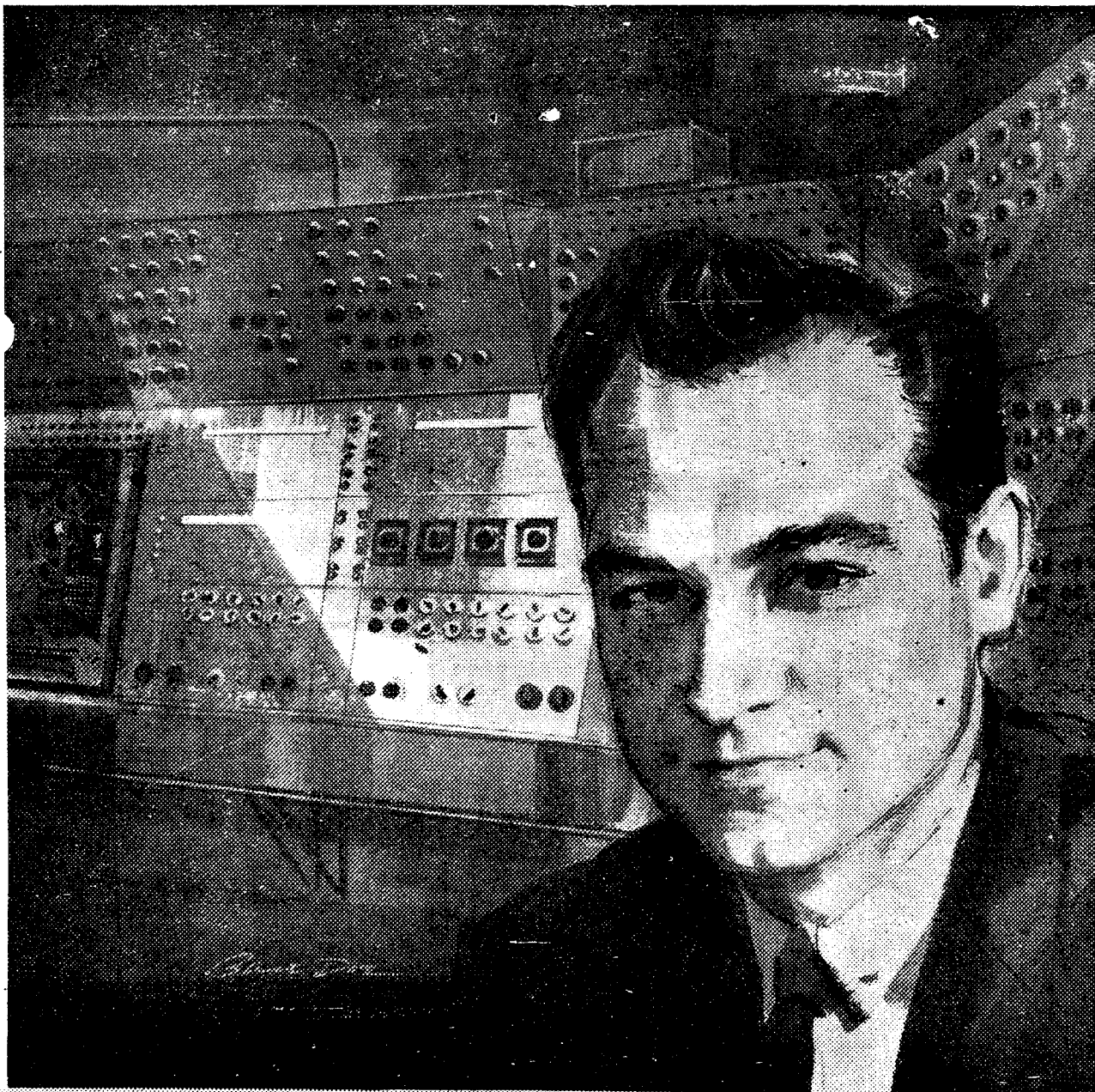
Computer expert Chuck Hampton is a man with problems.

As head of our Avionics Division's Computer Applications section, Hampton pits his analog and digital computers against the mathematical intricacies of infra-red research, optics, spectral background studies, feedback control and weapon system design.

At 30, with a BSEE from the University of Illinois, Chuck Hampton is a Senior Engineer. He typifies the progress made at Aerojet by younger men of technical distinction, in electronics and many other areas.

We think the challenge is imposing and the opportunity impressive.

An Aerojet-General representative will be on campus to discuss employment opportunities with you on (MONTH) (DATE). Contact the placement office for details.



# Aerojet-General CORPORATION

AZUSA AND NEAR SACRAMENTO, CALIFORNIA • A SUBSIDIARY OF THE GENERAL TIRE & RUBBER COMPANY