

THE CAMPUS

Undergraduate Newspaper of the City College Since 1907

COL 105—No. 13

WEDNESDAY, NOVEMBER 18, 1959

401

Supported by Student Fees

C To Vote On New Plan For Elections

By Al Boxer
Student Council will vote today on a proposal to stagger the election of Council members.

Spring Election for Seniors

Specifically, the proposal calls for the election of all senior representatives at the end of the school year and all freshman Council members at the end of the first semester.

Kahn Expects Approval

SG President Barry Kahn '60 said he expected little opposition to the plan from Council. If the change is approved, it will be put to the ballot at the next general election as a referendum.

Flowers for Fund

Sigma Alpha will sell flowers tomorrow, for the benefit of the College's Handicapped Children's Fund. As part of the drive, Paul Newman, a professional artist, will draw caricatures to be sold with a flower for fifty cents in the book store.

Novelist to Speak On Thomas Mann

Pulitzer Prize winner Glenway Wescott will speak on Thomas Mann Monday in 217 Finley at 12. The talk, one of a series given as part of the English 90 course, is open to all students and faculty members at the College.

Board to Hold Hearings Today On Administration Building

By Bruce Solomon
The Board of Estimate will consider today a request of \$1,228,000 for a new administration building at the College.

College Scored On Blood Drive

The Administration is hindering this term's drive for blood donations, the newly formed Blood Council charged yesterday.

The Forgotten Parties

DFU and PLS in Decline After Furor of Last Term
On an April afternoon last term, eighty students crowded into a Wagner Hall classroom to vote on a membership policy for a newly-formed political party.

'Merc' Forced To Cut Issue For Fall Term

By Mike Katz
A lack of suitable material will prevent Mercury, the College's humor magazine, from publishing this term.

Singing Houses

House Plan will sponsor a grand sing on the South Campus lawn tomorrow. The five Houses which present cheers or songs "best typifying the House Plan spirit," will become finalists at the 25th Anniversary Ball at the Biltmore Hotel, December 19.

United Nations Official Cites Prejudice Against Women

By Margaret Ryan
"Wherever there is discrimination, women are discriminated against doubly," a United Nations official said here last night at the fourth Sidney Hillman lecture.

College Scored On Blood Drive

The Administration is hindering this term's drive for blood donations, the newly formed Blood Council charged yesterday.

Al Rokow '60, a representative of the Council, said that Dean Leslie W. Engler (Administration) refused a request to have blood drive announcements read by instructors in classrooms.

Dean Engler said he refused the council's request because it is a policy not to extend this privilege to student organizations.

"There is no reason to take up instructors' time with these announcements when there are other ways of publicizing these activities," Dean Engler said. The only exception to this policy is in the case of Student Government elections, he added.

Rokow said Dean Engler should give the Blood Council special consideration because "the organization is unique in that it is designed to serve the entire College community and anyone connected with the College."

The Blood Council was formed last week. The members are House Plan, the Inter-Fraternity Council, ROTC, Hillel, Newman Club, Christian Association, Gamma Sigma Sigma and Alpha Phi Omega.

Registration for this term's drive begins tomorrow. Donation pledges will be accepted until next Wednesday at booths in Knittle Lounge, Shepard and in the Trophy Lounge, Finley.

Plasma from the College's Blood Bank is available free of charge whenever needed by a student, member of the faculty or administration, and members of their immediate families.

The Forgotten Parties

DFU and PLS in Decline After Furor of Last Term
On an April afternoon last term, eighty students crowded into a Wagner Hall classroom to vote on a membership policy for a newly-formed political party.

The same day, a splinter group dissociated itself from the organization and enthusiastically created an opposition party.

One summer and half a term later, both parties have faded. They have difficulty attracting fifteen students to a meeting. The lecture programs they envisioned have not materialized. Their platforms have been forgotten.

The original party was the Democratic Forum and Union, and it had been founded in March. The students at that meeting were voting on a resolution stating that "Communists and Communist sympathizers are not welcome in this organization."

The vote was a tie. The president of the DFU resigned, taking with him most of the students who had voted in favor of the resolution. They formed another political group — the Party of Liberal Students.

These two parties were the only such groups at the College in at least four years. In the heat of that meeting, student leaders predicted a resurgence of political activity here, and a consequent uplift for Student Government.

Why did the parties fail? Past



SG PRESIDENT Barry Kahn said parties had "no depth."

and present leaders of the parties say that there are no more controversial issues which will arouse students. Some, like SG President Barry Kahn '60, a former member of the DFU, say that there were no real issues last term.

"The parties were created last term as a special effect—they have no depth," Kahn said.

"I'd just as soon see them disband," he said. Most of the other students involved in student politics disagree.

Renee Roth '60, last term's SG president and a member of the PLS, said that "there is not a significant difference between the two parties on College issues. But I hope they will remain, because they provide competition. And they did create an interest

(Continued on Page 3)

Board to Hold Hearings Today On Administration Building

By Bruce Solomon

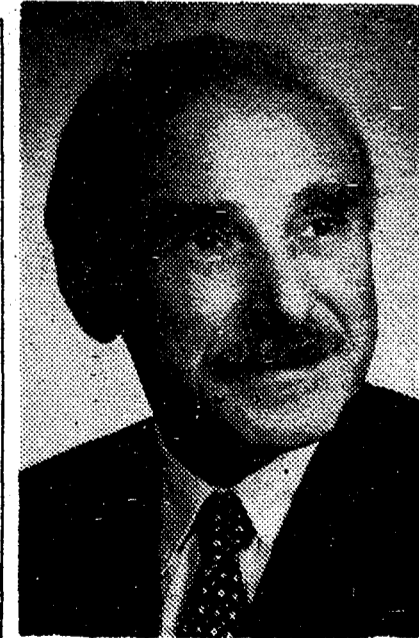
The Board of Estimate will consider today a request of \$1,228,000 for a new administration building at the College.

The building, which would be constructed on Jasper Oval, was approved by the City Planning Commission last month as part of the Board of Higher Education's proposed 1960 capital budget. The Board of Estimate has the final decision on the budget.

Dr. Gustave Rosenberg, BHE chairman, will appear at the Board's meeting to urge approval of the capital budget requests for the municipal colleges.

Meanwhile, President Gallagher has submitted the College's proposed operating budget for the 1959-1960 fiscal year to the BHE for tentative approval.

The budget provides for operating expenses at the College, while the capital budget provides for improvements in the physical plant. The capital budget follows the calendar year and must be approved before January 1960. The operating budget is in effect during the fiscal year—from July 1



BHE CHAIRMAN Gustave Rosenberg will speak at hearings.

to June 30.

Therefore, it is not expected to come before the Board of Estimate until next April.

The College's operating budget request is \$12,849,000, an increase of \$673,973 over last year's funds. Of this amount, \$7,329,358 would be earmarked for the day session.

United Nations Official Cites Prejudice Against Women

By Margaret Ryan

"Wherever there is discrimination, women are discriminated against doubly," a United Nations official said here last night at the fourth Sidney Hillman lecture.

The official, Dr. Sophie Grinberg-Vinaver, Chief of the Section on the Status of Women in the Division of Human Rights, said that discrimination by sex is as serious as racial and religious discrimination.

"We want to improve the economic, social and political status of women and get them equal rights with men," she said.

"The best means of action is

education," said Dr. Grinberg-Vinaver. She added that her division holds regional seminars and sends field workers to underdeveloped areas to inform women of their rights.

"Our activities attract thousands of illiterate adult women who can't wait to learn," she said.

In countries where there is a lack of formal education, Dr. Grinberg-Vinaver said, the percentage of illiteracy among women is twice that among men.

"In countries where free, compulsory education is not enforced, boys go to school and girls stay home," she said.

Parties

(Continued from Page 1)
 SG elections by presenting forms."
 Stanley Feingold (Govt), who is faculty advisor in groups, predicted that parties "probably will re-form until there is a on SG reorganization." can serve a useful purpose if they hold identical because there will be two of students looking for candidates for SG of Professor Feingold said.
 "Something of significance done—for instance, interesting speakers to the students will become in the parties," Neil '61, the chairman of the aid. "We want to develop spirit at the College."
 "Most students have forgotten it, student are still reliving the charges of left-wing that were hurled at groups and individuals."
 "It had a negative effect whole. They stirred up issue. It made SG to the students at a SG couldn't afford to," said Neil Grumer of the DFU last
 ver, Ed Sullivan '60, tem-chairman of the PLS, at the issue is still alive. main difference between is that the PLS is to communism in its, and the DFU is not." e adds: "We are opposed saying whether there is ism at the College or
 two parties have general for the future. They both, empty to invite speakers, nsor debates on College y York City issues.
 ps in late December, elections are near, the will become vocal again. il then, the DFU and the bably will remain very the background, waiting ssue.

Students Get the Facts At Police Headquarters

Time: 9 A.M. Thursday.
 Place: Police Headquarters.

The twelve students from the College came to get the facts. The facts on police reporting. English 51. Journalism.

They went to the lineup. The prisoners weren't out yet. Mug shots were flashed on a screen.

"Those're wanted men," the officer said. "This is how we get familiar with 'em."

The officer started to read their descriptions: "Intense brown eyes."

"That isn't much to go on," a student said.

"Rectangular ears."

The screen was removed. Six mugs mounted the platform. Most hung their heads. They were questioned for about three minutes apiece. They replied in whispers. An officer told the students:

Lock and Key

Lock and Key, the senior honorary leadership society, is now accepting applications for membership. All upper juniors and all seniors with outstanding leadership records are eligible to join. Applications may be obtained in 152 Finley no later than November 30.

PUBLIC MEETING Sarrell Dobbs

National Secretary of the Socialist Workers Party
 1956 Presidential candidate,
 former Teamsters Union leader
 will speak on
 "LABOR'S ROLE IN THE 1960 ELECTIONS"
 FRIDAY, NOV. 20 - 8 P.M.
 116 University Place (nr. Union Square)
 Auspices Militant Labor Forum
 Contribution: \$1 Students 50c

BROOKLYN LAW SCHOOL

Non-Profit Educational Institution ★ Approved by American Bar Association
 DAY AND EVENING Undergraduate Classes Leading to LL.B. Degree
 GRADUATE COURSES Leading to Degree of LL.M.

New Term Commences February 8, 1960

Further information may be obtained from the Office of the Director of Admissions,
 PEARL ST., BROOKLYN 1, N. Y. Near Borough Hall.
 Telephone: MA 5-2200

ONE NIGHT ONLY — NOVEMBER 20

FRIDAY EVENING — 8:30 P.M. and MIDNIGHT
 Jay Weston Presents

for moderns

DAVE BRUBECK QUARTET
 LAMBERT, HENDRICKS & ROSS
 CHRIS CONNOR
 CHICO HAMILTON

extra added attractions
 MAYNARD FERGUSON and orchestra
 LEONARD FEATHER emcee
 production by Ed Sarkesian

REGIE HALL, 57th St. & 7th Ave., N. Y. 19

\$4.75 - \$3.75 - \$3.00 - \$2.50

Tickets now on sale at CARNegie HALL BOX OFFICE
 RECORDS, 52 St. & Broadway - RECORD SHACK, 274 W. 125 St.

"Anything prisoners say here can be used as evidence. Sometimes they don't answer, or give false answers. It's amazing how much they know about the law."

The last prisoner was a boy, 16. He was charged with stealing a woman's wallet on a bus.

He denied it. He said the woman's purse was open. The wallet fell out. He picked it up. He turned around. The woman was gone.

The interrogating officer sneered. "Sixteen years old and he's already experienced," he said.

He added that the prisoner had attended the same school as the arresting officer.

Time: 10:30.
 Place: The Rogues' Gallery.

An officer showed the pictures to the students. There were pictures of men who impersonated women. The class was amused. So was the officer. "Some of these female impersonators look better than my wife," he said.

A student asked: "Do you use the third degree?"

"It's a method of the past. The courts throw out evidence obtained by force. It doesn't pay."

"Do you find a lot of clever criminals?"

"Yeah. But sooner or later they make a mistake and we catch 'em."

Time: 11:00.
 The officer urged the class to go into police work. The class went home.

Greenwich Village

comes to the

CITY COLLEGE STORE

FREE CARICATURES

Mr. Paul Newman, Professional artist from MacDougal St. in Greenwich Village will be present in the Book Store for one Day only...

THURSDAY, NOVEMBER 19th

10 A.M. — 4 P.M.

Mr. Newman has consented to do caricatures FREE of any students who donate 50c to the SIGMA ALPHA FLOWER SALE

which will be held on Campus on the Same Day

All proceeds collected by Mr. Newman will be turned over to Sigma Alpha.

- Support a worthy charity
- Buy a flower for 50c
- Get your free CARICATURE

CITY COLLEGE BOOK STORE

"See the ART PRINT SALE in the Bookstore"

(Advertised on this page)

SALE! Giant Size Brush Stroke Color Reproductions of Great Art



"Framed While You Wait"

Exquisite museum quality reproductions in brilliant color! Mounted on heavy board, covered with protective varnish! So real you can actually see and feel the raised brush strokes!

Verified Value — 6.50 to 8.00 each!

IMAGINE!
 ONLY **1.98** each

Choose from Breathtaking Masterpieces by World-Renowned Artists

- | | | |
|---------|------------|---------|
| Picasso | Van Gogh | Vernier |
| Renoir | Cezanne | Degas |
| Rouault | Bos | Braque |
| Utrillo | Gasser | Lautree |
| Dufy | Modigliani | Matisse |

and many, many others. Most are larger than this entire page; all are decorator favorites to lend new beauty and interest to any room in your home or office. Tremendous selection includes Japanese panels, classic and modern landscapes, seascapes, portraits and still-lives — each a delight to the eye, each a picture you will be proud to own and display.



SALE! Two-inch Wide Solid Oak Frames...

The Framing Service is FREE, takes only a few seconds! Sturdily-constructed, natural oakwood frames, in the favorite scoop pattern and five most popular sizes. Specially chosen to enhance the beauty of the prints, they make an exciting decorator package at huge savings!

- | | | | |
|---|------|-------------------|------|
| 13 1/2 x 15 1/2-inch size | 1.98 | 18 x 24-inch size | 2.49 |
| 16 x 20-inch size | 2.49 | 20 x 26-inch size | 2.98 |
| | | 24 x 30-inch size | 2.98 |
| Natural Bamboo Design Frames to fit the Japanese Panels | | | |
| 10 x 25-inch size | 2.49 | 10 x 30-inch size | 2.49 |

City College Store

Booters Face Hawks Today With NCAA Playoff Berth Possibly Riding on Result

The College's chances for a berth in the NCAA soccer playoffs may be determined today when the booters face Hunter at 2:30 on the Hawks' field.

Dr. Arthur H. DesGrey, faculty manager of athletics, said yesterday that he believes the selection committee "is waiting for the results of the Hunter game before making up their minds." In any case, he added, "we should know definitely on Thursday."

Dr. DesGrey received a telephone call yesterday from Huntley Parker, chairman of the state selection committee, in which he was told that the College is still under consideration for a playoff spot. DesGrey explained that Parker wants to know the score of today's game immediately after the contest is completed.

Coach Harry Karlin warned, however, that the committee might still not count the Hunter game when it makes the selection. "It might be too late," he said.

The New York State champion will play Bridgeport University, New England champs, Monday in the first round at a neutral site.

The results of today's match with Hunter, which will be held on the Hawks' Bronx field, should also determine the champion of the Metropolitan Conference.

Both the College and Hunter have 6-0-1 league records, and the winner today will take over first place, with only one game remaining.

The Hawks, who have lost a non-league game to Fairleigh Dickinson, 3-0, will be the last formidable foe for the Beavers, barring the playoffs. Hunter has tied Pratt, 1-1, the same score of the booters' game with the Brooklyn school.

"I don't think we'll have too much trouble with Hunter," coach Harry Karlin said. "It's true that

Frosh Cagers Find Baskets Necessary



Photo by Grossman
DRIP CONTAINER: Basket catches water while frosh coach Dave Polansky talks to team.

Freshman basketball practice was nearly called on account of wet grounds yesterday. The rain leaked through the roof of Goethals gymnasium, where the team works out.

When the leak was discovered a wastepaper-basket was put on the court to catch the dripping water. This obstruction prevented the frosh from using the whole court.

Coach Dave Polansky was unperturbed by the situation. His comment was: "Don't move that basket, I don't want to have to mop up the floor every five minutes."



COACH HARRY KARLIN

they tied Pratt, which is just what we did, but I don't think Hunter is in Pratt's class."

WINTER SPORTS PREVIEW—I

Fencers Tough—So Is Schedule

This is the first in a series of articles about the College's winter sports teams. Subsequent articles will be on the wrestling, swimming, and basketball teams.

By Vic Grossfeld

The College will field a strong fencing team this season, but it will have a struggle to do better than break even.

The fencers face just about all the top teams in the country and, according to coach Ed Lucia, "will be lucky" to finish over .500. Last year the fencers had a 3-5 record.

Lucia feels that the Beavers' "toughest opponents will be Navy and New York University, who incidentally, are the two best teams in the nation."

Navy won both the Intercollegiate Fencing Association and Amateur Fencers League of America tournaments last year and NYU was runnerup to the Middies each time. Neither team

has been hurt seriously by graduation.

But the Beavers will be no pushovers. Returning from last year are such proven performers as Andy Kemeny and Harold Mayer in the sabre and Alonzo Johnson and Reggie Spooner in the foil.

Kemeny was chosen an All-American last year and figures to be even better this season. Mayer is considered by Lucia to be "as good as Kemeny" and has proven this by beating Andy in several tournaments.

"Kemeny has a long background in fencing and has terrific form," Lucia said. "But Mayer is the greatest natural fencer I've ever seen at the College. He's only been fencing for two years and he instinctively knows how to do something even before he's taught."

"Our big problem right now is with our epee team. They are all inexperienced so we just can't

tell how they'll do," Spooner said. Dick Blanquet, Mike and Spencer Bihler appear to be the top candidates for the team.

The foil team is in far better shape than the epee team. Last year's top men, John Spooner, are back and Alonzo Johnson, who saw quite a bit of action last season, will probably be the third man of the team. Substitutes include Morty Jerry Muldovin and Lomakin.

The strong point of the team is, of course, in the sabre division. Kemeny and Mayer have capable support in the sabre division. Fred Marcus called upon.

Riflers Top

The College's rifle team is in its eighth straight meeting season, defeating Kings College 1433-1396, Friday night.

LUCKY STRIKE presents

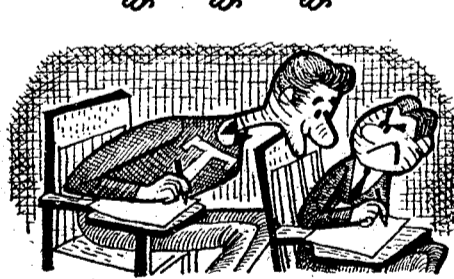
Dear Dr. Frood:



Dr. Frood, Ph.T.T.

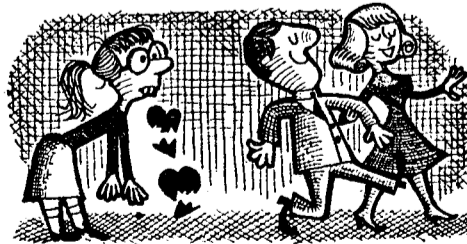
Dear Dr. Frood: I read a great deal so I never have time for girls. Am I missing anything?
Literate

Dear Literate: Only a few marbles.



Dear Dr. Frood: The guy next to me copys from my paper. What should I do?
Truthfil

Dear Truthfil: Warn him. Quick!



Dear Dr. Frood: When I refuse to go out with unattractive girls, my friends say, "Beauty is only skin-deep." What do you say?
Fussy

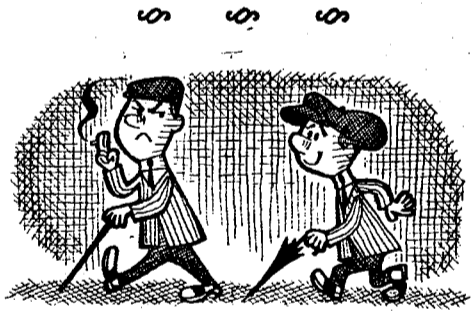
Dear Fussy: That's deep enough.

DR. FROOD'S MORAL OF THE MONTH

Brevity is the soul of wit. Which is why the sight of a girl in a Bikini invariably brings a smile to a man's face.

Dear Dr. Frood: Do you think next year's dresses will cover the knees?
Clothes-Conscious

Dear Clothes-Conscious: They'd better cover more than that.



Dear Dr. Frood: I admire my roommate very much, so I try to be like him. He smokes Luckies. Do you think I should smoke the same cigarette he does?
Awed

Dear Awed: No. Ask him for an unused Lucky.

Dear Dr. Frood: Do you think a boy should kiss a girl on their first date?
Shy

Dear Shy: She would seem to be the logical choice.

DR. FROOD ON QUERIES BEST LEFT UNQUERIED

Years of experience have taught me never to ask a girl these questions:

- Shouldn't we skip the garlic?
- What happened to the fraternity pin?
- Wow! Is that your roommate?
- Do you mind turning out that light?
- You mean that isn't a beanie?
- How come you never wear shorts?
- Why don't you smoke your own Luckies?



COLLEGE STUDENTS SMOKE MORE LUCKIES THAN ANY OTHER REGULAR!

When it comes to choosing their regular smoke, college students head right for fine tobacco. Result: Lucky Strike tops every other regular sold. Lucky's taste beats all the rest because L.S./M.F.T.—Lucky Strike means fine tobacco.



TOBACCO AND TASTE TOO FINE TO FILTER

Product of The American Tobacco Company—Tobacco is our middle name